

600AJ

ARTICULATING BOOM LIFT



Performance

| | |
|---------------------------|------------------------|
| Platform Height | 18.47 m |
| Working Height | 20.47 m |
| Horizontal Outreach | 12.10 m |
| Up and Over Clearance | 8.10 m |
| Swing | 360 Degrees Continuous |
| Platform Capacity | 230 kg |
| Platform Size | 0.91 x 2.44 m |
| Platform Rotator | 180 Degrees Hydraulic |
| Jib | 1.83 m |
| Jib Range of Articulation | 130 Degrees (+70, -60) |
| Weight | 11,900 kg |
| Drive Speed | 6.8 km/h |
| Gradeability | 45% |
| Turning Radius | |
| Outside | 3.56 m |
| Inside | 1.68 m |

Standard Specifications

Power Source

| | |
|--------------------|----------------|
| Diesel Engine | Deutz D2011L04 |
| Fuel Tank Capacity | 113.6 L |
| Fuel Consumption | 2.46 L/hr |

Hydraulic System

| | |
|-----------------|---------|
| Capacity | 115.8 L |
| Auxiliary Power | 12V-DC |

Tyres

| | |
|----------|-------------------------|
| Standard | IN 355/D625 Foam-Filled |
|----------|-------------------------|

Standard Features

- 4WD & 4WS
- 180 Degree Hydraulic Platform Rotator
- Platform Console Machine Status Light Panel*
- AC Generator including AC Outlets to Platform
- 4 Degree Tilt Alarm/Indicator Light
- Swing Out Engine Tray
- 12V-DC Auxiliary Power
- Hourmeter
- Proportional Controls
- Control ADE® System
- Lifting/Tie Down Lugs
- Horn
- Four-Wheel Hydrostatic Drive
- Oscillating Axle
- Operator Tool Tray
- Inward Self-Closing, Self-Locking Swing Gate
- Flashing Amber Beacon
- Motion Alarm
- Glow Plugs (Diesel Engines)

* Provides indicator lights at platform control console for system distress, low fuel, 5 degree tilt light, and foot switch status.



Accessories & Options

- 0.91 x 1.83 m Platform
- 1/2 in. Air Line to Platform
- Light Package
- Platform Worklights
- Mesh to Mid-Rail
- Special Hydraulic Oils (Consult Factory)
- Spark Arresting Muffler
- Accessory Packages
 - SkyWelder® Package
 - SkyGlazier® Package
 - Nite Bright® Package
 - SkyGuard®
 - Pipe Rack
 - Cable Ladder Carrier
 - ClearSky®

Note: Some options may increase lead time, and some option combinations may not be available.

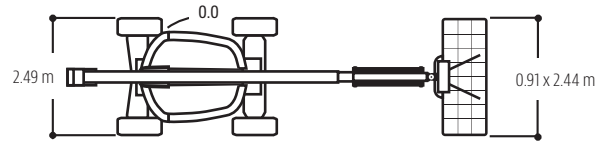
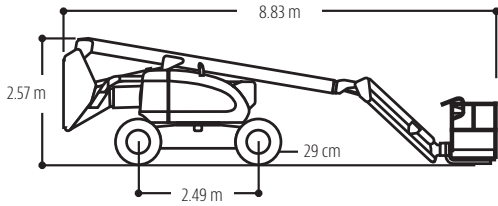
600AJ

ARTICULATING BOOM LIFT

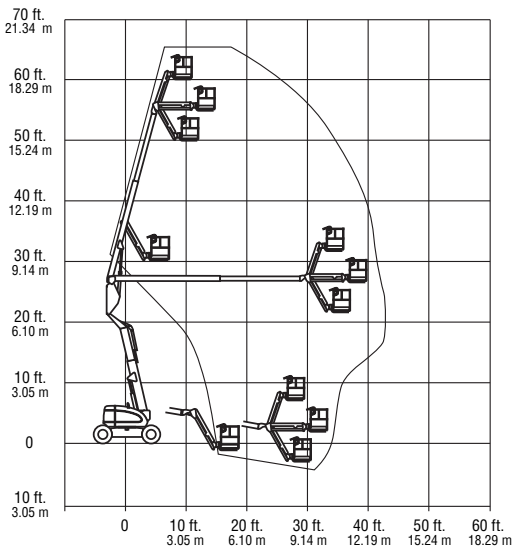


Dimensions

All dimensions are approximate.



Reach Diagram



The JLG "1 & 5" Warranty

JLG Industries, Inc. backs its products with its exclusive "1 & 5" Warranty. We provide coverage on all products for one (1) full year and cover all specified major structural components for five (5) years. Due to continuous product improvements, we reserve the right to make specification and/or equipment changes without prior notification. This machine meets or exceeds AS/NZS 1418.10 2011 as originally manufactured for intended applications.



JLG Industries (Australia)

358 Park Road
Regents Park, NSW 2143
Telephone 02 8718 6300
Fax 02 8718 6377

www.jlg.com.au

An Oshkosh Corporation Company