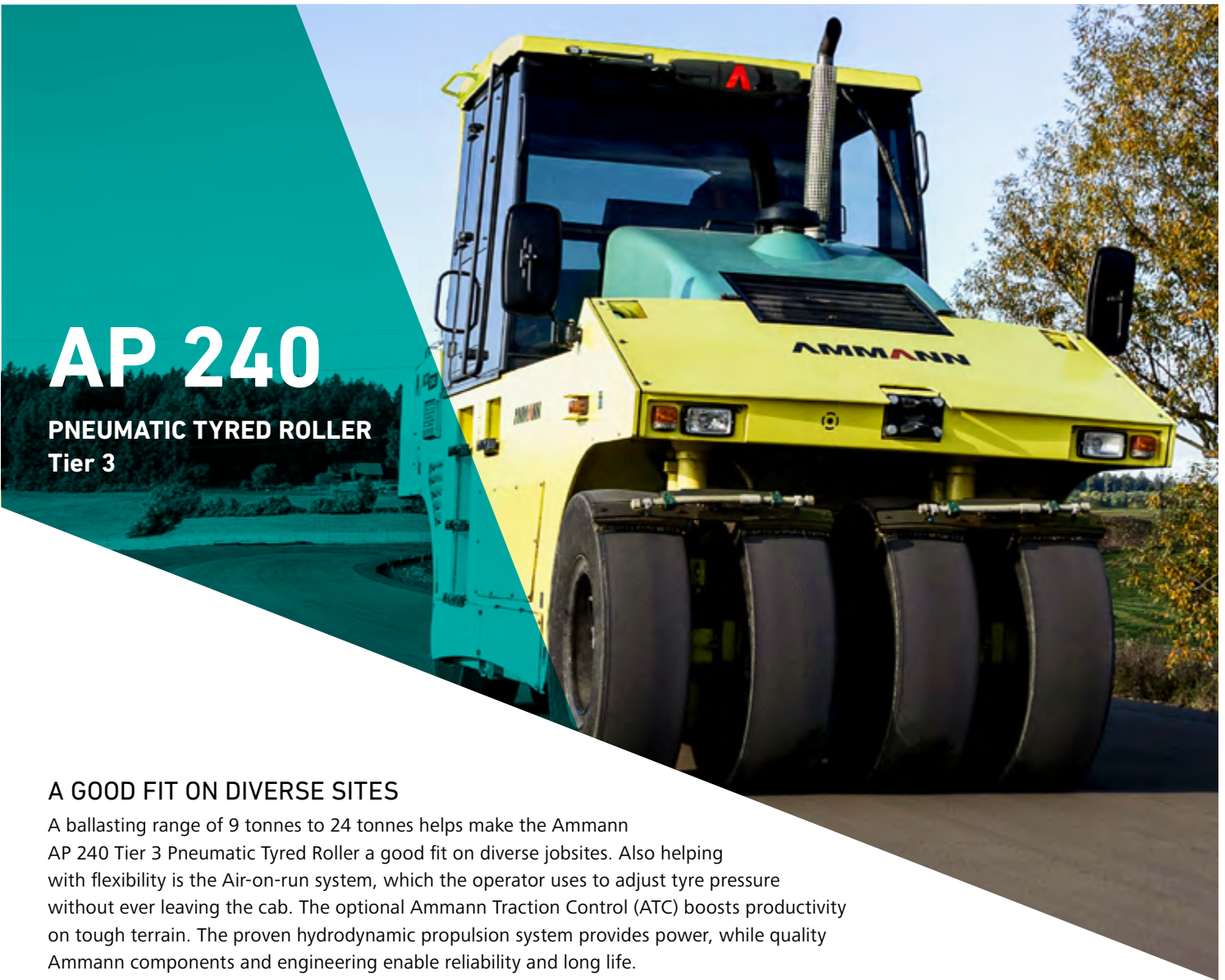


AP 240

PNEUMATIC TYRED ROLLER Tier 3



A GOOD FIT ON DIVERSE SITES

A ballasting range of 9 tonnes to 24 tonnes helps make the Ammann AP 240 Tier 3 Pneumatic Tyred Roller a good fit on diverse jobsites. Also helping with flexibility is the Air-on-run system, which the operator uses to adjust tyre pressure without ever leaving the cab. The optional Ammann Traction Control (ATC) boosts productivity on tough terrain. The proven hydrodynamic propulsion system provides power, while quality Ammann components and engineering enable reliability and long life.

COMPACTION AND POWER

- Steerable front isostatic axle with oscillation
- Tyre widths and arrangement for consistent coverage and even weight distribution
- Turbo-aspirated Cummins diesel engine
- Rear drive axle

DISTINCTIVE ENGINEERING, DESIGN

- Rigid frame
- 2 working stations
- Intuitive control and handling
- Exceptional operator visibility
- Spacious, comfortable cab

STRESS-FREE MAINTENANCE

- Easy access to service points, drain ports and filters

BALLASTING AND WEIGHT ADJUSTMENT

- Air-on-run for effortless tyre pressure adjustment; controlled from cab
- Easy-to-adjust ballast
- Concrete ballast of 2800 kg
- Solid steel ballast of 6000 kg
- Additional ballasting space of 2.7 m³ in frame

APPLICATIONS

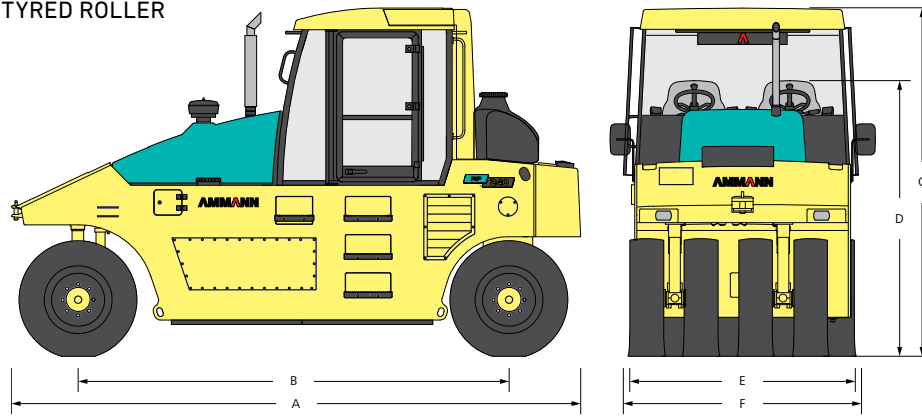
- Medium and large jobsites
- Transport construction (municipal and town roads, motorways, airfields)
- Building construction (houses and industrial zones)
- Asphalt mixtures up to 120 mm (after compaction)
- Hydraulically consolidated mixtures up to 150 mm
- Loam and clay soils up to 150 mm
- Mixed soils up to 200 mm
- Sand and gravel materials up to 250 mm
- Not suitable for the compaction of rockfill

MAXIMUM RECOMMENDED COMPACTED LIFT THICKNESS AT OPTIMAL WORKING CONDITIONS

	Sand / Gravel	Mixed Soils	Silt	Clay	Stabilisation
AP 240	0.25 m (10 in)	0.2 m (8 in)	0.15 m (6 in)	0.1 m (4 in)	0.15 m (6 in)

AMMANN

TECHNICAL SPECIFICATIONS
 AP 240 PNEUMATIC TYRED ROLLER
 Tier 3



DIMENSIONS

A	MACHINE LENGTH	5020 mm (197.7 in)
A	MACHINE LENGTH (THERMAL APRONS)	5780 mm (227.6 in)
B	WHEELBASE	3800 mm (149.7 in)
C	MACHINE HEIGHT	3110 mm (122.5 in)
D	MACHINE HEIGHT (REMOVED ROPS)	2450 mm (96.5 in)
E	DRUM WIDTH	1986 mm (78.2 in)
F	MACHINE WIDTH	2100 mm (82.7 in)
F	MACHINE WIDTH (THERMAL APRONS)	2310 mm (91 in)

WEIGHT & DRIVING CHARACTERISTICS

OPERATING WEIGHT	9590 kg (21 140 lb)
MAXIMUM WEIGHT	24 000 kg (52 910 lb)
MAX. TRANSPORT SPEED	19 km/h (11.8 MPH)
CLIMBING ABILITY	25 %
TURNING RADIUS INNER (EDGE) LEFT	6180 mm (243.3 in)
NUMBER OF FRONT WHEELS	4
NUMBER OF REAR WHEELS	4
SIZE OF TYRES	11 x 20"

MISCELLANEOUS

BRAKES OPERATING	Drum
BRAKES PARKING	Mechanical disc
BRAKES EMERGENCY	Mechanical disc
TYPE OF DRIVE	Hydrodynamic
NUMBER OF DRIVEN WHEELS	4
OSCILLATION ANGLE	3°
ANGLE OF STEERING	32°
TYPE OF WATERING	Pressure
FUEL TANK CAPACITY	250 l (66 gal)
WATER FOR TYRE WATERING	460 l (121.5 gal)
VOLTAGE	12 V

ENGINE

MANUFACTURER	Cummins QSB 3.3-C99
POWER ACCORDING TO ISO 3046-1	74 kW (99 HP)
MAXIMUM TORQUE	412 (304) / 1400 Nm (ft lb) / rpm
ENGINE COMPLIES WITH EMISSION REGULATIONS	EU Stage IIIA, U.S. EPA Tier 3
NUMBER OF CYLINDERS	4
COOLING SYSTEM OF ENGINE	Liquid



STANDARD EQUIPMENT

- Operator platform with guard rails
- Lockable dashboard with vandalism guard
- Two driver's seats and steering wheels
- 4 + 4 smooth diagonal tyres 18 PR
- Air-on-run tyre inflation system
- Isostatic oscillating front axle
- Hydrodynamic rear axle drive
- Halogen work lights

OPTIONAL EQUIPMENT

- CE conformity kit
- Cab ventilated and heated
- Air condition for Cab version
- ROPS structure
- Water ballast option (2.7 t)
- Additional ballast up to 24 t
- Thermal aprons
- Edge cutter
- Radial tyres