

## REQUIRED SAFETY EQUIPMENT



## SAFETY FIRST

If you are collecting the equipment for someone else please make sure this sheet is given to the equipment user to read. This sheet should be given to the site supervisor if the equipment is being hired for commercial use so that the information is available to all users.

**Before starting any job, be sure to spend a few minutes planning and understanding the hazards and risks of the job. Do this by:**

- Thinking about and observing your surroundings
- Running through the steps of the job in your mind
- Identifying the hazards, how you can get hurt and how you'll prevent it
- Knowing what plant and equipment you need
- Only starting when you can do the job safely
- Ensuring you are trained or experienced for the task
- Communicating with everyone involved

**Points to consider when planning a task. Can you:**

- Come into contact with an energy source (e.g. heat, electricity, substance under pressure) or hazardous materials
- Be struck-by or against anything?
- Be caught-in, on or between anything?
- Slip, trip or fall on the same or too a lower level
- Strain or sprain a muscle?
- Cause damage to plant equipment or property?
- Spill or pollute something?

# Carrier Dump Mini - Battery

## Instructions for Use



### Pre-Start Checks Safety

Perform the following inspections before operating the machine.

- Check that the bolts, nuts, and knobs are tightened firmly.

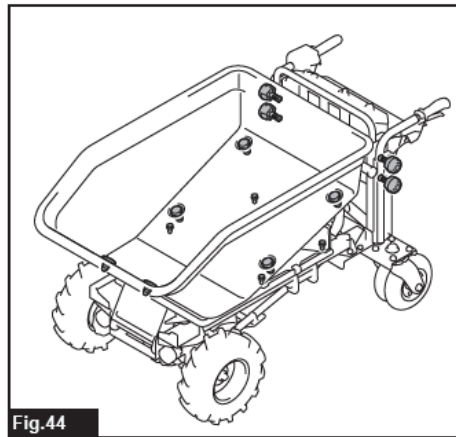


Fig.44

- Check that the brake is working properly. If you feel the brake is not working sufficiently, perform the cleaning of the brake. If no improvement can be found, return to Hirepool for repair
- Check that the dump unit is locked when the handle of the dump unit is fully pulled down

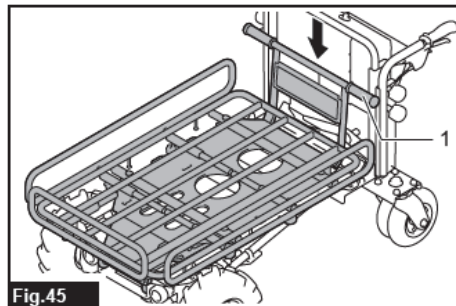


Fig.45

1. Handle

- Check that the tires of front and rear wheels are not damaged, and the air in the tires is sufficient
- Check that the front lamps, and rear lamp are clean. Clean them if necessary
- Check that the scrapers are in the correct position. If the scraper is facing upward, adjust the orientation of the scraper by loosening the bolts. When tightening the bolts, do not push the scraper toward the front of the machine.

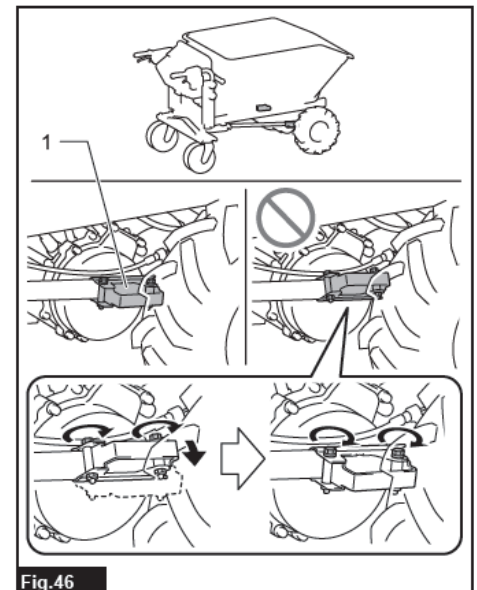


Fig.46

1. Scraper

## Starting Procedure

- To turn on the machine, lock the brake lever, and then press the power button without pulling the switch trigger. The main power lamp lights up in green. To turn off the machine, release the switch trigger and lock the brake lever, and then press the power button
- An electrical test is performed the first time the machine is driven after the machine is turned on. If a problem is detected, the main power lamp blinks in red or green alternately. In this case, refer to the section for troubleshooting.
- If the main power lamp lights up in red or blinks in red or green, refer to the instructions for machine/battery protection system or the section for troubleshooting.
- This machine employs the auto power-off function. To avoid unintentional start up, the machine will automatically shut down when the machine is stopped and not operated for a certain period after the machine is turned on.
- If you press the power button while pulling the switch trigger, the machine does not turn on. Release the switch trigger, and then press the power button.
- Press the forward/reverse button to switch between the forward mode and reverse mode. Press the speed button to switch between low speed, medium speed, and high speed. When the power is

**NOTE:** The forward/reverse button is not available while pulling the switch trigger.

**NOTE:** A short beep sound comes out when operating the machine in reverse.

**NOTE:** The speed button is not available when operating the machine in reverse.

**NOTE:** If the machine detects a problem, the speed indicators blink alternately. In this case, refer to the section for troubleshooting.

## Checking the battery level on the battery box

- Press the check button to indicate the remaining battery capacities. The battery indicators correspond to each battery

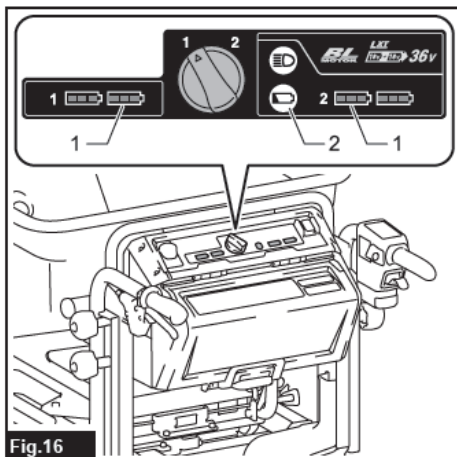


Fig.16

Battery indicator status			Remaining battery capacity
On	Blinking	Off	
			50% - 100%
			20% - 50%
			0% - 20%
			Empty
			Battery not installed

## Checking the battery level on the battery cartridge

Only for battery cartridges with the indicator

Press the check button on the battery cartridge to indicate the remaining battery capacity. The indicator lamps light up for a few seconds.

Indicator lamps			Remaining capacity
Lighted	Off	Blinking	
			75% to 100%
			50% to 75%
			25% to 50%
			0% to 25%
			Charge the battery.
			The battery may have malfunctioned.

## Installing or removing battery cartridge

- Always switch off the machine and lock the brake lever before installing or removing of the battery cartridge.
- Always install the battery cartridge fully until the red indicator cannot be seen. If not, it may accidentally fall out of the machine, causing injury to you or someone around you.
- Do not install the battery cartridge forcibly. If the cartridge does not slide in easily, it is not being inserted correctly.
- Do not use the high-temperature battery cartridge. When the high-temperature battery cartridge is used, the machine stops automatically before a short beep sound is emitted, and may cause an injury.
- Be careful not to pinch your fingers when opening or closing the battery cover.
- Make sure that the cover of the battery box is closed securely before use. Otherwise, mud, dirt, or water may cause damage to the product or the battery cartridge

## Installing the battery cartridge

- Pull up the lock lever, and then open the cover of the battery box
- Align the tongue on the battery cartridge with the slot on the battery box, and then slide the cartridge until it locks in place with a little click
- Insert the lock key in the place shown in the figure as far as it will go, and turn it clockwise

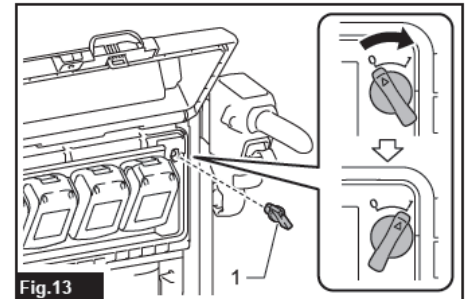


Fig.13

**NOTE:** to turn the lock key, insert the lock key completely

- Close the cover of the battery box

## Removing the battery cartridge

- Pull up the lock lever, and then open the cover of the battery box
- Pull out the battery cartridge from the battery box while sliding the button on the front of the cartridge
- Turn the lock key counter clockwise, and pull it out
- Close the cover of the battery box