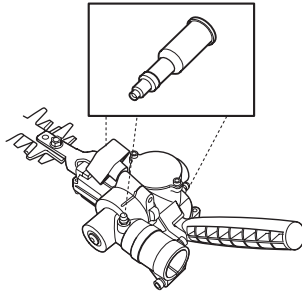


# MAINTENANCE

## Gear housing



There are three grease nipples on the gear housing. Use a grease gun to top up with grease. This should be carried out approximately every 20 working hours. Use Husqvarna special grease, part no. 503 98 96-01.



**CAUTION!** The gear housing must not be filled completely with grease. The grease expands as the machine heats up during operation. If the gear housing was completely filled with grease it could damage the seals and lead to leakage of grease.

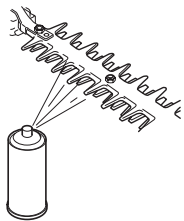
The grease in the bevel gear does not normally need to be changed except if repairs are carried out.

## Cleaning and lubrication



After you have used the machine clean any resin and plant residue from the blades using cleaning agent 531 00 60-75 (UL22).

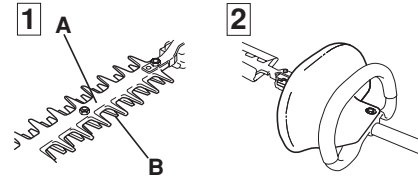
Always lubricate the blade bars with special grease, part no. 531 00 60-74 (UL 21) before use.



## Maintenance schedule

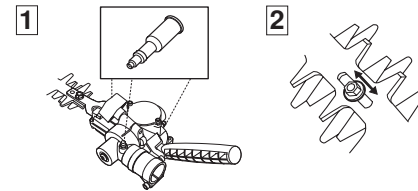
Below you will find some general maintenance instructions. If you need further information please contact your service workshop.

### Daily maintenance



- 1 Check that the blades do not move when the engine is idling or when the choke is in the start throttle position.
- 2 Check that the hand guard is not damaged. Replace the guard if damaged. (HA 110)

### Weekly maintenance



- 1 Fill the gear housing with grease. This should be carried out approximately every 20 working hours.
- 2 Check that the screws that hold the blades together are correctly tightened.

## Technical data

Technical data	HA 110	HA 850
<b>Weight</b>		
Weight, Lbs/kg	2,0	2,3
<b>Blades</b>		
Length, mm	550	550
Blade speed, cuts/min	4184	4184