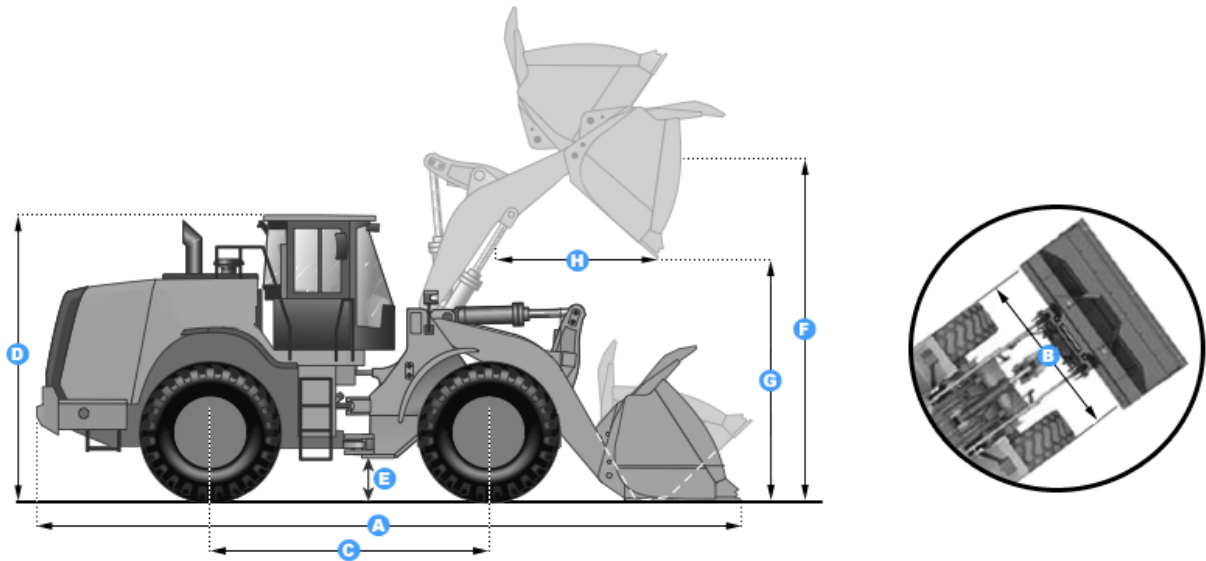


## SPECIFICATIONS SHEET – CAT 910G



### Dimensions

- A: Length with Bucket:** 5460 mm
- B: Width Over Tires:** 2030 mm
- C: Wheelbase:** 2340 mm
- D: Height to Top of Cab:** 3020 mm
- E: Ground Clearance:** 381 mm
- F: Hinge Pin - Max Height:** 3090 mm
- G: Dump Clearance:** 2440 mm
- H: Reach at Max Lift:** 860 mm

### Engine

- Make:** Caterpillar
- Model:** 3204
- Net Power:** 65 hp (48.5 kw)
- Power Measured @:** 2400 rpm
- Displacement:** 5.2 L
- Number of Cylinders:** 4

## **Operational**

**Operating Weight:** 6445.5 kg

**Fuel Capacity:** 113 L

**Hydraulic System Capacity:** 57 L

**Engine Oil Fluid Capacity:** 11 L

**Cooling System Fluid Capacity:** 25 L

**Transmission Fluid Capacity:** 23 L

**Front Axle/Diff Fluid Capacity:** 15 L

**Rear Axle/Diff Fluid Capacity:** 15 L

**Static Tipping Weight:** 4480 kg

**Turning Radius:** 4720 mm

**Operating Voltage:** 12 V

**Alternator Supplied Amperage:** 40 amps

**Rear Axle Oscillation:** 22 degrees

**Tire Size:** 15.5 x 25.8 PR

## **Transmission**

**Type:** Planetary power shift

**Forward Gears:** 3

**Reverse Gears:** 1

**Max Speed (Forward):** 24.1 km/h

**Max Speed (Reverse):** 10.6 km/h

## **Hydraulic System**

**Pump Type:** double section gear

**Relief Valve Pressure:** 2500 psi (17236.9 kPa)

**Raise Time:** 6 sec

**Dump Time:** 1.3 sec

**Lower Time:** 3.5 sec

## **Bucket Specs**

**Breakout Force:** 41.5 kN

**Dump Clearance:** 2440 mm

**Bucket Width:** 2150 mm

**Bucket Capacity (Heaped):** 1 m<sup>3</sup>