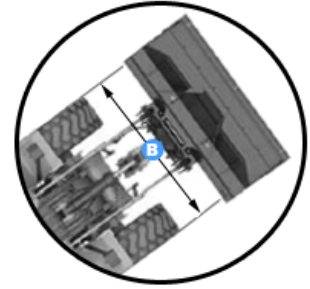
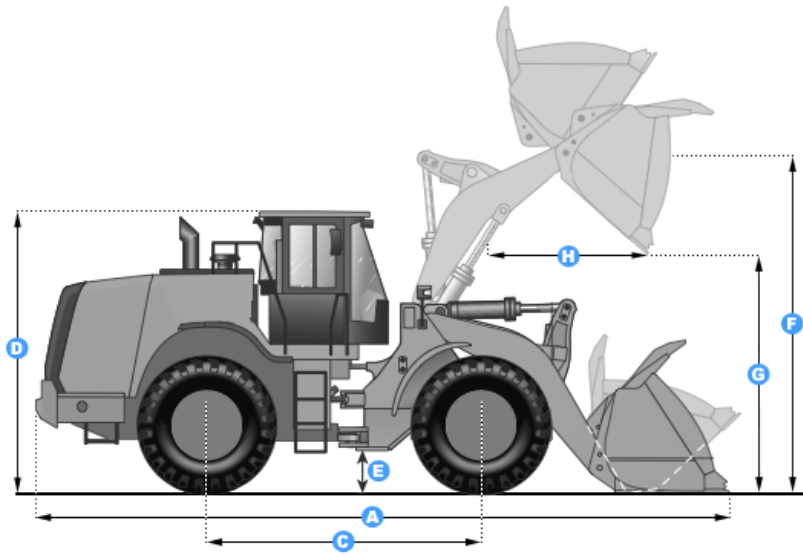


Specifications Sheet - TCM L9-2 WHEEL LOADER



Dimensions

- A: Length with Bucket:** 5015 mm
- C: Wheelbase:** 2200 mm
- D: Height to Top of Cab:** 2725 mm
- E: Ground Clearance:** 340 mm
- G: Dump Clearance:** 2500 mm
- H: Reach at Max Lift:** 1185 mm

Engine

- Make:** Kubota
- Model:** V3300-DI-KA
- Net Power:** 59.1 hp

Operational

- Operating Weight:** 4695 kg
- Fuel Capacity:** 75 lit
- Static Tipping Weight:** 3400 kg
- Tire Size:** 17.5/65

Transmission

- Type:** Powershift
- Max Speed (Forward):** 34.4 km/h
- Max Speed (Reverse):** 34.4 km/h

Bucket Specs

- Breakout Force:** 46.6 kN
- Dump Clearance:** 2500 mm
- Bucket Width:** 1990 mm
- Bucket Capacity (Heaped):** 0.9 m³