

# KÄRCHER

makes a difference

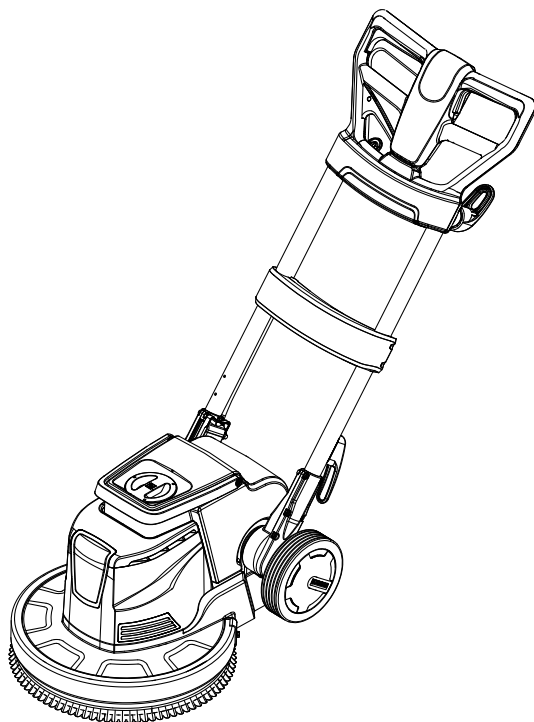
**BDS 33/180 C Adv**

**BDS 43/180 C Adv**

**BDP 43/450 C Adv**

**BDS 43 Duo C Adv**

**BDS 51/180 C Adv**



Deutsch	2
English	10
Français	17
Italiano	26
Nederlands	34
Español	41
Português	49
Dansk	58
Norsk	65
Svenska	72
Suomi	79
Ελληνικά	86
Türkçe	95
Русский	102
Magyar	111
Čeština	118
Slovenščina	125
Polski	132
Românește	141
Slovenčina	148
Hrvatski	155
Srpski	162
Български	169
Eesti	178
Latviešu	185
Lietuviškai	192
Українська	199
中文	208
العربية	221

**Register and win!**  
[www.karcher.com/register-and-win](http://www.karcher.com/register-and-win)



**EAC**



59639670 04/19



Please read and comply with these original instructions prior to the initial operation of your appliance and store them for later use or subsequent owners.

## Contents

Safety instructions . . . . .	EN	1
Function . . . . .	EN	1
Proper use . . . . .	EN	1
Environmental protection . . . .	EN	1
Operating and Functional Elements . . . . .	EN	2
Before Startup . . . . .	EN	3
Operation . . . . .	EN	3
Transport . . . . .	EN	4
Storage . . . . .	EN	4
Troubleshooting . . . . .	EN	4
Accessories . . . . .	EN	5
Technical specifications . . . .	EN	6
EU Declaration of Conformity .	EN	7
Warranty . . . . .	EN	7
Spare parts . . . . .	EN	7

## Safety instructions

Before using the appliance for the first time, read and observe these operating instructions and the accompanying brochure: Safety information for Disc single-pulley machine machines No. 5.956-659.0.

### Safety Devices

Safety devices serve to protect the user and must not be rendered in operational or their functions bypassed.

#### Lock

Prevents the inadvertent folding down of the cleaning head in the parking position.

### Hazard levels

#### **DANGER**

*Pointer to immediate danger, which leads to severe injuries or death.*

#### **WARNING**

*Pointer to a possibly dangerous situation, which can lead to severe injuries or death.*

#### **CAUTION**

*Pointer to a possibly dangerous situation, which can lead to minor injuries.*

## ATTENTION

*Pointer to a possibly dangerous situation, which can lead to property damage.*

## Function

Hard surfaces can be scrubbed, deep-cleaned, cleaned, crystalised or shampooed by means of the rotating disc brush on the bottom of the scrubber.

## Proper use

Use this appliance only as directed in these operating instructions.

- The appliance is used for cleaning of hard surfaces and carpets in the interior of buildings.
- The appliance may only be equipped with original accessories and spare parts.
- The appliance is not suited for the use in potentially explosive environments.
- This appliance is suited for the commercial use, e.g. in hotels, schools, hospitals, factories, shops, offices, and rental companies.
- The application temperature ranges from +5°C to +40°C.

## Environmental protection



The packaging materials are recyclable. Please do not throw packaging in the domestic waste but pass it on for recycling.



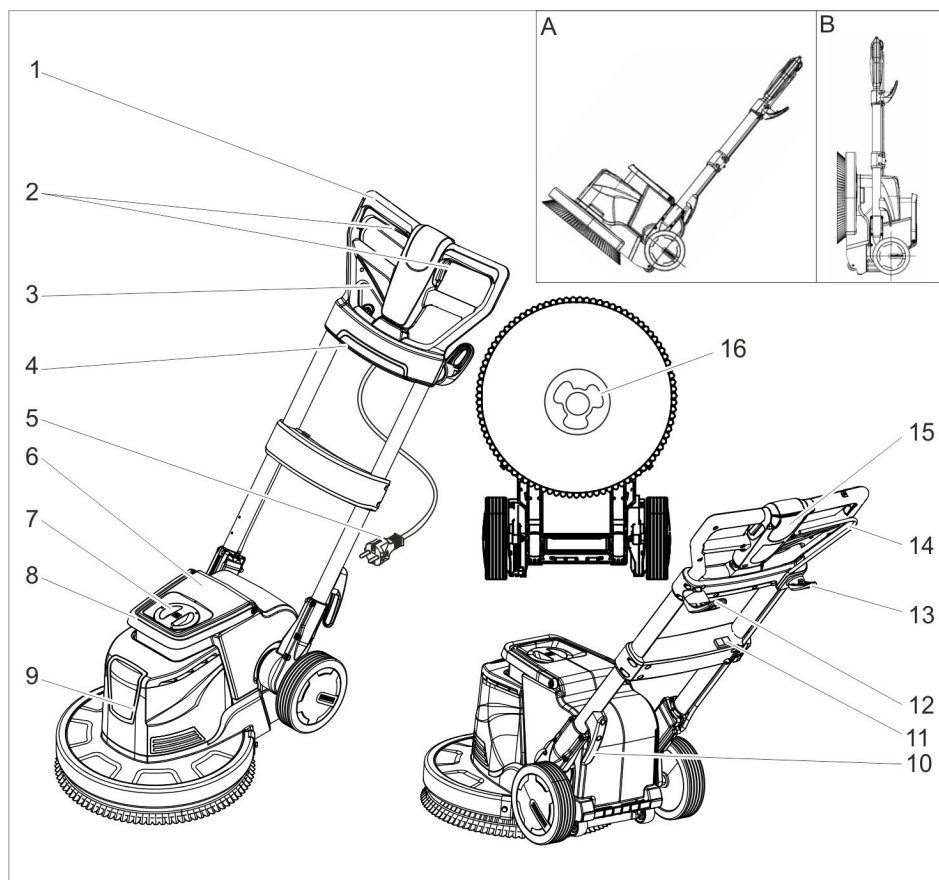
Old units contain valuable recyclable materials. Batteries, oil and similar substances may not be released into the environment. Therefore please dispose of old units through suitable collection systems.

### Notes about the ingredients (REACH)

You will find current information about the ingredients at:

**[www.kaercher.com/REACH](http://www.kaercher.com/REACH)**

# Operating and Functional Elements



- 1 Handle
- 2 ON/OFF switch, brush drive
- 3 Lever for level adjustment
- 4 Receptacle (only use the vacuum device listed in the "Options" chapter)
- 5 Mains cable with mains plug
- 6 Detergent tank (accessory)
- 7 Detergent tank cover (accessory)
- 8 Detergent tank transport handle (accessory)
- 9 Cleaning head
- 10 Cable hook
- 11 Switch brush speed (only BDS 43 Duo)
- 12 Cable hook, rotating
- 13 Hook for brush

- 14 Dosing lever for detergent solution (accessory)
- 15 Unlocking button
- 16 Towing arm

- A Transport position  
B Park position

## Colour coding

- The operating elements for the cleaning process are yellow.
- The controls for the maintenance and service are light gray.

## Before Startup

- ➔ Check the mains cable regularly for damage such as aging or formation of cracks. If you find a damage, then the cable must be replaced before using it any further.
- ➔ Check appliance for damage, have damages repaired by customer service.

## Attach the brush/pad

- ➔ Disconnect the mains plug from the socket.
- ➔ Pull the lever for level adjustment and bring the handle toward the front into a vertical position.
- ➔ Place the appliance into the parking position.
- ➔ Place the disc brush/driver plate onto the actuator and turn in anti-clockwise direction.

## Filling the detergent tank (accessory)

### ⚠ **WARNING**

*Risk of damage. Only use the recommended detergents. With other detergents, the operator bears the increased risk regarding the operational safety and danger of accident.*

*Only use detergents that are free from solvents, hydrochloric acid and hydrofluoric acid. Follow the safety instructions for using detergents.*

- ➔ Remove the lid.
- ➔ Fill detergent solution into the detergent tank.
- ➔ Replace the lid.

## Operation

### ⚠ **WARNING**

*Risk of injury! The operation of the appliance requires practice.*

- Ensure that there are no obstacles in the area to be cleaned.
- Check the floor consistency for its suitability.
- The handling becomes more difficult with uneven or rough surfaces.

### ⚠ **DANGER**

*Risk of electric shock.*

- Do not drive over the mains cable.

### ⚠ **DANGER**

*Risk of injury!*

- Never wrap the mains cable around your body or your neck.
- Do not let the mains cable come in contact with the rotating brushes or rotating pads.

## Adjust handle

### ⚠ **WARNING**

*Risk of accident due to loss of control over the appliance. Do not adjust the handle unless the motor is at a standstill.*

#### **Note:**

- In the park position, a pin secures the cleaning head from being folded down inadvertently.
- To release the lock, position the appliance in the park position, so that the handle is parallel to the ground, pull the tilting adjustment lever and lift up the handle.
- ➔ Pull the lever for level adjustment.
- ➔ Tilt the handle into a comfortable position.
- ➔ Release the lever for level adjustment.

## Select brush speed (only BDS 43 Duo)

### ⚠ **WARNING**

*Risk of accident due to loss of control over the appliance. Only operate the switch for the brush speed when the motor is at a standstill.*

- ➔ Set the switch of the brush speed to the desired speed.  
LO: 150 revolutions per minute  
HI: 300 revolutions per minute

## Turning on the Appliance

### **ATTENTION**

*Risk of damage to the floor covering. Do not operate the appliance on the spot.*

- ➔ Swivel cable hook downward and remove the cable completely from the appliance.
- ➔ Insert the mains plug into a socket.

### ⚠ **WARNING**

*The highest allowed net impedance at the electrical connection point (refer to technical data) is not to be exceeded.*

*In case of any uncertainty regarding the present net impedance at your connection point, please contact your local power supply company.*

- ➔ Set handle to working height.
- ➔ Hold the handle with both hands.
- ➔ Press and hold the unlocking button.
- ➔ Activate the switch.
- ➔ Release the unlocking button.
- ➔ Release the switch to interrupt operation.

### Control the direction

- **Left:** Press the handle downward.
- **Right:** Raise the handle.

### Cleaning

- ➔ Apply the detergent solution to the floor or use the dosing lever (accessory).
- ➔ Move the appliance over the surface to be cleaned.
- ➔ Afterwards, pick up the wastewater with a wet vacuum or a cloth.

### Shutting down

- ➔ Release the switch.
- ➔ Disconnect the mains plug from the socket.
- ➔ Pull the lever for level adjustment and bring the handle in a vertical position.
- ➔ Swivel the top cable hook upward and wind the cable between the two cable hooks.
- ➔ Remove the detergent tank (accessory) and dispose of unused detergent solution.
- ➔ Rinse the detergent tank (accessory) with clear water.
- ➔ Pull the lever for level adjustment and bring the handle toward the front into a vertical position.
- ➔ Place the appliance into the parking position.
- ➔ Clean the casing with a damp cloth.

### Transport

#### ⚠ CAUTION

*Risk of personal injury or damage! Mind the weight of the appliance during transport.*

- ➔ Swivel the handle vertically and lock it.

- ➔ Tilt the appliance backwards into the transport position and drive it to its destination location.

#### ATTENTION

*Risk of damage! Only transport the appliance on the wheels; the small rollers on the bottom of the cleaning head are not suitable to be used for transport.*

- ➔ When transporting in vehicles, secure the appliance according to the guidelines from slipping and tipping over.

### Storage

#### ⚠ CAUTION

*Risk of personal injury or damage! Consider the weight of the appliance when storing it.*

- ➔ Pull the lever for level adjustment and bring the handle toward the front into a vertical position.
- ➔ Place the appliance into the parking position.
- ➔ Store the appliance in a dry room, frost-protected room.

### Troubleshooting

#### ⚠ DANGER

*Risk of injury. Pull the plug from the mains before carrying out any tasks on the appliance.*

In case of faults that cannot be remedied using the table below please contact the customer service.

Fault	Remedy
Insufficient cleaning result	Replace contaminated pads and wash them at a max. temperature of 60 °C.
	Replace worn disc brush / pad.
	Check the suitability of brush/pad and detergent for the respective use.
Appliance vibrates strongly	Check for correct seating of disc brush/pad.
	Check pad attachment.
Pad does not turn	Check if foreign bodies are blocking the brush/pad; remove the foreign bodies if required.

## Accessories

Description	BDS 33/180	BDS 43/180	BDP 43/450	BDS 43 Duo	BDS 51/180
Detergent tank upgrade kit	2.642-495.0		2.642-476.0		2.642-476.0
Suction unit with suction ring			2.642-674.0		
Suction ring individual			4.071-223.0		
Additional weight			2.642-802.0		
Polishing brush, natural bristles	6.369-892.0		6.369-897.0		
Disk brush, red (medium, standard)	6.369-890.0		6.369-895.0		6.371-206.0
Disk brush, black (hard)	6.369-893.0		6.369-898.0		6.371-265.0
Brush shampoo	6.369-891.0	6.369-896.0		6.369-896.0	6.371-266.0
Driver plate pad	6.369-894.0	6.369-899.0	6.369-900.0	6.369-899.0 6.369-900.0 6.369-901.0	6.371-208.0
Polishing pad, white	6.369-903.0		6.369-469.0	6.369-469.0	
Polishing pad, beige	6.369-904.0		6.371-081.0	6.371-081.0	6.369-468.0
Polishing pad, nature			6.371-149.0	6.371-149.0	6.371-146.0
Polishing pad, blue			6.369-471.0	6.369-471.0	
Disc pad, red (medium)	6.369-905.0		6.369-470.0		6.369-079.0
Disc pad, green (hard)	6.369-906.0		6.369-472.0		6.369-078.0
Disc pad, black (very hard)	6.369-907.0		6.369-473.0		6.369-077.0
Diamond pad, white			6.371-256.0		6.371-260.0
Diamond pad, yellow			6.371-257.0		6.371-261.0
Diamond pad, green			6.371-238.0		6.371-240.0
Pad, microfibre	6.369-908.0		6.905-526.0		6.371-271.0
Driver plate for sand paper			6.369-902.0		
Sand paper, grit 36			6.990-008.0		
Sand paper, grit 60			6.990-009.0		
Sand paper, grit 100			6.990-007.0		

## Detergent

Application	Detergent		
Routine cleaning of tiles in sanitary areas	RM 751	Removal of coating from linoleum floors	RM 754
Routine cleaning and basic cleaning of industrial floors	RM 69 ASF	Intermediate carpet cleaning	RM 768 iCap-sol
Removal of coating from all alkali-resistant floors (e.g. PVC)	RM 752	Crystallisation agent for calcium-containing floors	RM 749

## Technical specifications

		BDS 33/180	BDS 43/180	BDS 43/450	BDS 43 Duo	BDS 51/180
<b>Power</b>						
Mains voltage	V/Hz	220...240/50				
Rated power	W	700	850	1760	1560	1000
Type of protection	--	IP X4				
Maximum allowed net impedance	Ohm	--			0,472	--
<b>Brush/pad</b>						
Diameter	mm	330	430			510
Speed	1/min	180		450	150/300	180
Contact pressure	N/cm²	0,48	0,38	0,42	0,44	0,25
<b>Dimensions and weights</b>						
Weight (without accessories)	kg	32	43	45,7	47	45
Dimensions (l x b x h)	mm	500 x 360 x 1200	660 x 430 x 1200			700 x 510 x 1200
Top clearance	mm	90				
<b>Values determined as per EN 60335-2-67</b>						
Total oscillation value	m/s²	<2,5				
Uncertainty K	m/s²	0,1		0,2		0,1
Sound pressure level L <sub>pA</sub>	dB(A)	63,2		69		63,2
Uncertainty K <sub>pA</sub>	dB(A)	1		2		1
Sound power level L <sub>WA</sub> + Uncertainty K <sub>WA</sub>	dB(A)	79		87	85	79