

DINGO™ K9-4

OPERATION & MAINTENANCE MANUAL



IMPORTANT: Become familiar with the contents of this manual before operating the Dingo. This Manual contains Safety, Operation and Warranty Information. Also become familiar with the controls & their proper use before operating the Dingo.



Modified September 2007

Introduction

Congratulations on purchasing the World's Leading Mini Digger.

In purchasing a Dingo you have obtained a machine of the highest quality and we want you to be totally satisfied as our customer. Please feel free to contact any of our branches for help with service, genuine replacement parts, business and operation tips and any other information you may require.

The information in this manual is current as at September 2007. In the effort to continually improve our products, Dingo reserves the right to change specifications without notice. Please, for critical information, contact you nearest Dingo branch.

When contacting us please have your Dingo Chassis and Model numbers handy. These details enable us to know the specifications of your Dingo.

Best Wishes,

Gary Briggs
And the entire Dingo Pack.

This manual belongs with your Dingo

Dingo Chassis Number	Dingo Model Number
Engine Type & Serial Number	Date Purchased

DISCLAIMER:

Specifications, design & service procedures are subject to change without notice.
Specifications may vary & may be approximate.

Contents

Introduction.....	2
Safety.....	5
General Operation.....	5
Operating on Slopes.....	6
Children.....	6
Service.....	6
Safety and Instruction Decals.....	7
Specifications	8
Operation -Pre Start-Up.....	9
Pre Start-Up (daily)	9
Adding Fuel.....	9
Checking the engine oil	9
Remove Debris from the Machine	9
Tyres and Traction	10
Operating Instructions	10
Control Levers / Control Panel	10
Key Switch.....	10
Throttle	10
Choke	10
Drive Control Levers.....	10
Attachment Tilt Lever.....	11
Loader Arms Lever	11
Control Panel Diagram	11
Auxiliary Hydraulic lever	11
Pump Selector Lever	11
Flow Divider Control.....	11
4in1 Bucket Lever	12
Hydraulic Immobiliser	12
Warning Light.....	12
Auxiliary Power Socket.....	12
Starting the Engine.....	12
Stopping the Engine.....	12
Stopping the Dingo	12
Moving a Non Functioning Dingo	12
Using Cylinder Locks	12
Attachments.....	13
Connecting.....	13
Disconnecting	13

Contents - *Continued*

Maintenance	13
Maintenance Schedule.....	14
Dingo Starter Pack	15
Bushes & Pins.....	15
Air Filter	15
Engine Oil.....	16
Changing / Draining Oil.....	16
Changing Oil Filter.....	16
Spark Plugs	16
Fuel Filter	16
Draining the Fuel Tank.....	16
Hydraulic System.....	17
Replacing the Hydraulic Filter	17
Changing the Hydraulic Fluid.....	17
Check Hydraulic Lines.....	17
Battery	17
Cleaning and Long Term Storage.....	18
Transporting and Securing	18
Spare parts diagrams.....	19
Grill Assembly.....	19
Chassis Assembly	20
Hydraulic Bank Assembly	21
Inner Tank Assembly	22
Main Control Bank Assembly	24
Remote Control Bank Assembly	26
Tank Top Assembly.....	28
Diesel Dash Assembly	30
Petrol Dash Assembly.....	32
Mount Plate Assemblies	33
Load Arm Assembly	34
Panel Assembly	36
Diesel Engine (Series I) Assembly	38
Diesel Engine (Series II) Assembly.....	41
Petrol Engine Assembly	44
Warranty Statement	44
Risk Hazard Assessment	46

Safety

General Operation

- Read, understand, and follow the instructions in the operation manual before using the Dingo.

- Keep hands, feet and clothing away from all moving parts and hydraulic cylinders.

- Allow only responsible adults who are familiar with the Dingo and its operation to use the Dingo.

- Do not allow any passengers on any part of the Dingo, including buckets and the operating platform.

- Do not refuel with the engine running, or while you or someone near is smoking.

- Do not operate any of the control levers (including auxiliary levers) unless you are standing with both feet on the platform and firmly holding the grip handles.

- Always wear long pants and substantial shoes (no sandals, thongs, tennis shoes, sneakers, shorts or skirts).

- Do not place feet under the platform.

- Watch where you are driving. Always look down and behind, before and while reversing.

- **WARNING** Engine exhaust contains **Carbon Monoxide**, which is an odourless, deadly poison. Carbon Monoxide can kill you. Do not run engine indoors or in a confined space.

- Always lower Dingo arms and/or place attachment on the ground when parking or leaving the Dingo unattended. Always stop the engine if leaving the operators platform.

- **IMPORTANT** Do not carry a load or heavy attachment with the Dingo arms in a raised position. Do not step off the platform with a load raised.

- Never jerk the control levers. Use a steady motion. Slow down before turning. Sharp turns may cause loss of control.

- Stop the engine before making any adjustments to the attachments or the machine.

- **WARNING** Never weld on or near the fuel tank whether it is empty or full.

- Do not operate on or near embankments. Look out for ditches, holes, etc. and beware of traffic when near roads.

- Do not allow any person or animal close to the Dingo or its attachments whilst in operation. Stop the machine if any person or animal comes close.

- Operate only in daylight or good artificial lighting.

- Do not operate the machine whilst under the influence of alcohol or drugs.

- Use extra care while loading or unloading the Dingo onto a trailer or truck.

- Do not touch equipment or attachment parts that may be hot from operation. Allow to cool before attempting to maintain, adjust or service.

- The Dingo is not a toy - Do not allow children to play on it.

Remember - Safety is your responsibility.

Operating on Slopes

All slopes require extra caution.

- **Do not** operate on slopes exceeding 15 degrees. If a slope is greater than 5 degrees, only go up and down (not across).
- **Always have the heavy end of the machine uphill.** Weight distribution will change. An empty bucket will make the rear of the machine heaviest, a loaded bucket will make the front of the machine heaviest. Various attachments will change which end is heaviest. If you are unsure, phone us and ask. These same rules apply when loading and unloading the Dingo onto a trailer or truck.
- **Avoid turning on slopes.** If you must turn, turn slowly keeping the heavy end of the machine uphill.
- Do not operate near ditches or embankments, the machine could turn over if a wheel goes over the edge of a cliff or ditch or the edge caves in.
- Do not operate on wet grass, reduced traction could cause wheel slip.
- Remove obstacles such as rocks, tree limbs, etc from the work area. Watch for ruts or bumps as uneven terrain could overturn the machine. Tall grass can hide obstacles.
- Operate in slow speed. Put pump selector valve in slow (turtle) position so that you will not have to stop or shift while on the slope.
- If parking on slopes or hillsides always lower the Dingo arms and attachment to the ground and chock the wheels.
- If machine becomes unstable, jump clear. Never try to stabilise the machine by putting your foot on the ground.

Children

- Be wary of the presence of children when operating a Dingo. Children are often attracted to the Dingo and the work activity.
- Keep children out of the work site and under the watchful care of a responsible adult.
- Be alert and turn the machine off if children enter the area.
- Never carry children (or anyone) on the Dingo or any of its attachments.
- Do not allow children to play on the Dingo or within the Dingo work site (aside from the danger of working machinery there may be holes into which a child could fall or various other dangers).
- Do not allow children to use the machine.
- Before reversing look behind and down for small children. Be aware of blind corners, shrubs, trees, or ends of fences that may obscure vision.

Service

- Before performing any service, repairs, maintenance or adjustment, stop the engine and remove the key.
- Never run the machine in an enclosed area.
- Perform all maintenance with the Dingo arms fully lowered. If Dingo arms need to be raised to perform tasks, secure them in the raised position by using cylinder locks or a safety stand. (Contact a Dingo representative if you are unsure)
- Look after the Dingo. Keep nuts and bolts tight.
- Do not tamper with safety devices. Before each use check safety systems properly.

- Keep the machine free of grass, leaves, or other debris build up. Clean up oil or fuel spillage. Allow the machine to cool before storing.

- Use extra care when handling petroleum and other fuels. They are flammable and vapours are explosive

- Use only an approved container.
- Never remove the fuel cap or add fuel while the engine is running. Allow engine to cool before refuelling. Do not smoke.
- Never refuel the machine indoors.
- Never store the machine or fuel container inside where there is an open flame, such as near a water heater or furnace.
- Never fill a container while it is inside a vehicle, car boot, utility tray or any surface other than the ground.
- Keep container nozzle in contact with the tank during filling.

- Stop and inspect equipment if you strike anything or hear any strange noise coming from the machine. If necessary repair machine before starting again.

- Use only genuine replacement parts to ensure that original standards are maintained.

- Battery acid is poisonous and can cause burns. Avoid contact with skin, eyes, and clothing. Your face, eyes, and clothing should be protected when working with a battery.

- Battery gases can explode. Keep cigarettes, sparks and flames away from battery.

- **WARNING** Hydraulic pressure escaping under pressure can penetrate the skin and cause injury.

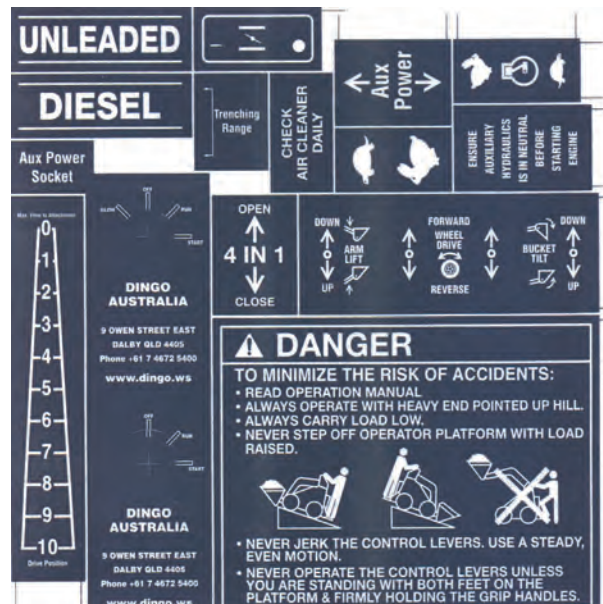
Keep hands and body away from pin hole leaks or nozzles that eject high pressure hydraulic fluid. A small leak can be dangerous. To find hydraulic leaks use cardboard or paper.

If fluid is accidentally injected into the skin a doctor familiar with this type of injury must surgically remove it within a few hours.

Safety and Instruction Decals

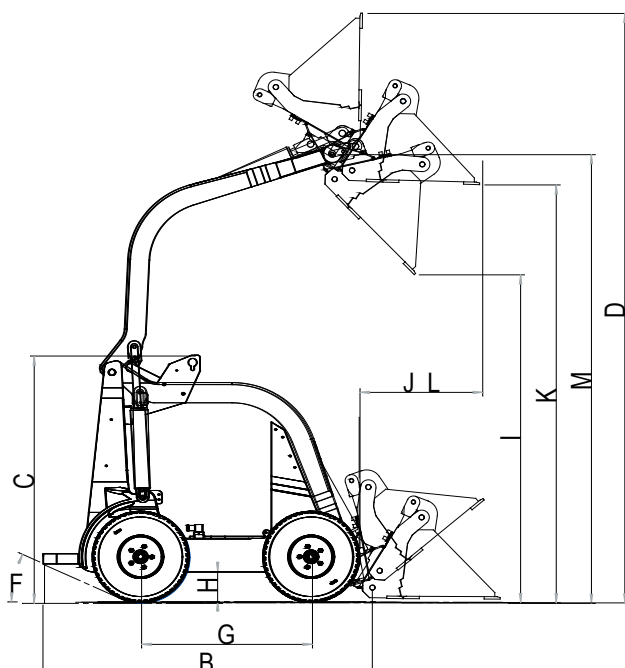
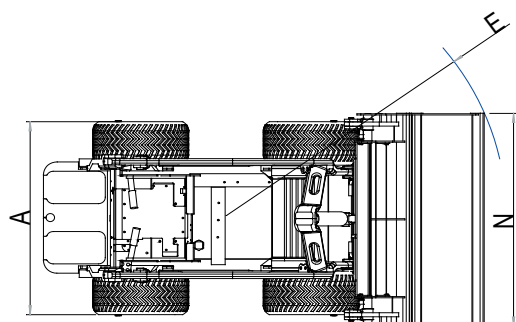
It is important to replace any damaged or missing decals.

Part number: 021-000-031)



Part Number 021-000-013

Specifications



Engine - Yanmar Diesel Series I & II

Power: 19.1 kW (25.6hp) 3600 RPM

Engine - Yanmar Diesel/Perkins PRO Series

Power: 27 kW (27hp) 3100 RPM

Engine - Kohler Petrol

Power: 18.6 kW (25hp) 3600 RPM

Dimensional Specifications

A. Overall Width: 970mm (38")

B. Overall Length: 1550mm (61")

C. Overall Height: 1200mm (47")

D. Maximum Operating Height

4 in 1 Bucket: 2650mm (104")

E. Turning Radius with 4 in 1 Bkt: 1300mm (51")

F. Angle of Departure: 25°

G. Wheel Base: 800mm (31")

H. Ground Clearance: 135mm (5.3")

I. Dump Height with Std Bkt: 1450mm (57")

J. Reach Fully Raised Std Bkt: 800mm (31")

K. Dump Height with 4 in 1 Bkt: 1835mm (72")

L. Reach Fully Raised 4 in 1: 800mm (31")

M. Height to Hinge Pin: 1940mm (76")

N. Machine width with 4 in 1 Bkt: 1045mm (41")

Tyre Size: 18 x 8.5 x 8 (6 Ply) std
Hydraulic Reserve Capacity:

90Litres (24US.gal)

Filtration: 10 Micron
Machine Weight: 920kg (2028lbm)

FACTS AT A GLANCE

K9-4

Performance

Hydraulics: 2 pumps

Pump Sizes: 9 & 4 cc

Pump Sizes:(Pro Series) 11.2 & 4cc

Hydraulic Pressure

234 Bar (3400psi)

Hydraulic Pump Output:

47 l/min 12.6gal/min

Travel Speed: 6 KmH (3.7mph)

Overdrive: 7.4 KmH (4.6mph)

SWL*: 325kg (716.5lb)

MWL*: 650kg (1433lb)

Wheel Motors: 29 cu in

Operation - Pre Start-Up

Pre Start-Up (daily)

Read this manual and the engine manual and become familiar with the contents of both.

Always check the following before operation:

- Fuel level - fill to 60mm from top
- Engine oil level (refer to engine manual)
- Remove all refuse from the machine
- Check air filter
- Check bushes
- Tyre pressure (25 - 35psi)
- Radiator - check/clean . Check fluid (diesel only)
- Check for oil leaks
- Check for damage & loose components
- Be sure that the work area is free from other people and children
- Clean work area of any debris
- Know and mark the location of any utility lines
- For first 6 days of operation of new machine, and first 6 days of operation after changing wheels, tighten wheel nuts daily.

Adding Fuel

Labelling on the fuel tank tells whether a machine requires petroleum or diesel fuel. For fuel type and information on suitable additives refer to Engine Manual as supplied. (NB. If labelling becomes lost or damaged order replacements from your Dingo representative).

1 Position Dingo on level surface, lower the Dingo arms and turn off the engine (turn ignition key to off). Remove the key.

2 Remove the bonnet to expose the fuel tank cap.

3 Clean around the fuel tank cap and remove the cap. Use a funnel to add fuel to the fuel tank, filling until the fuel reaches 60 - 70 mm below the top of the tank. This space is needed to allow the fuel room to expand. **Do not fill the fuel tank completely full.**

4 Replace the fuel cap securely. Clean away any fuel that may have spilt.

DANGER - Petroleum can be extremelyammable and highly explosive.

To avoid a fire or explosion that may burn yourself, other, or cause property damage:-

- Use a funnel and fill the fuel tank outdoors, in an open area
- **Allow the engine to cool before refuelling**
- Clean up any petrol spills.
- Only fill to 60 mm from top of tank.
- Never smoke while handling fuels, and stay away from an open flame or any place that a spark may ignite petroleum fumes.
- Store fuels in an approved container, out of reach from children. Never buy more than a 30 day supply of fuel.

Checking the engine oil

Check the engine oil level using the dip stick. (Refer to your engine manual for details)

Remove Debris from the Machine

IMPORTANT: Overheating will result if the engine is operated with a blocked grass screen, dirty or plugged cooling fins, and/or cooling shrouds removed.

The hydraulic system will keep cooler if the machine is free from debris on the hydraulic tank and fittings.

Park the machine on a flat surface, lower the Dingo arms and turn off the engine. (turn ignition key to off). Remove the key.

Check air filter pre-cleaner for debris. If required, wipe away debris before and during each use.

Debris can build up in the engine area. Remove sides of engine bay and clean any debris build-up with a brush or blower before each use.

IMPORTANT: It is preferable to blow out dirt than to wash it out. If water is used, keep it away from electrical appliances.

IMPORTANT: Do not high pressure wash. High pressure washing can damage the electrical system.

Tyres and Traction

The correct tyre pressure is usually between 172 and 241 kpa (25-35psi). (Use lower pressures for soft ground conditions & higher pressures for hard ground conditions) Use of incorrect tyre pressure will reduce the stability and carrying capacity of the Dingo.

Filling the tyres with water can improve the Dingo's stability for lifting applications. Water filling equipment can be purchased from Dingo Australia.

This range includes:

- **8" Dingo tyres** [machine width 970mm] Specially designed for Dingo these 18"x8" tyres feature a unique tread pattern for excellent performance in a range of conditions, 6 ply for strength & stability and a compound designed for durability.
- **8" turf tyres** [machine width 970mm] general purpose - suitable for grassy areas, dry soil and paved surfaces - minimum ground disturbance.
- **8" lug tyres** [machine width - 970] tractor type, for building sites, and muddy situations.
- **20 x 8" sand tyre** [machine width - 1020] better flotation & clearance for sandy & loose material conditions.
- **5" forklift type tyres** [machine width - 810mm] narrower tyres, suitable for heavy loads, restricted access, inside buildings, great on all hard surfaces.
- **3" narrow solid tyres** [machine width - 760mm] only for very restricted access - will fit through a standard doorway.
- **Tracks** [machine width - 1100mm] excellent flotation and traction - suitable for mud, sand and slush.
- Solid fill (all of the tyres mentioned above (excluding the 3" solids) can be supplied by Dingo Australia, filled with a puncture-proof, solid foam).
- For more information on our range of traction products, please speak to your nearest Dingo representative.

Operating Instructions

Read all the safety instructions and the pre start up section of this manual and the engine manual before operating the Dingo.

Caution - Do not operate any of the control levers (including auxiliary lever) unless you are standing with both feet on the platform and firmly holding the grip handles.

IMPORTANT! **Ensure the auxiliary hydraulic lever is in the centre position before attempting to start engine.** The most common cause of 'hard to start/engine, will not turn over fast enough, battery does not have enough power' type starting problems is that the auxiliary lever has been left on or knocked into gear and the engine is trying to start under load.

Control Levers / Control Panel

Key Switch

The key switch, used to start the engine, varies on petrol and diesel models. Check engine manufacturer's manual for starting instructions. To shut engine off, rotate key to OFF position (counter clockwise direction).

Throttle

Move control forward to increase engine speed and rearward to decrease engine speed.

Choke

For instructions regarding use of the choke (petrol models) refer to the engine manufacturer's manual.

Drive Control Levers

To go forward, slowly push the right and left drive control levers forward.

To go backward, slowly pull the right and left drive control levers backward.

To go straight, apply equal pressure to both drive control levers.

To turn, decrease pressure on the drive control lever closest to the direction you want to turn. The farther you move the drive control levers in either direction, the faster the machine will move in that direction.

To slow or stop, move or release the drive control levers into neutral. (If released the control levers will automatically return to neutral).

Attachment Tilt Lever

To tilt/crowd attachment forward, slowly push the tilt lever forward.

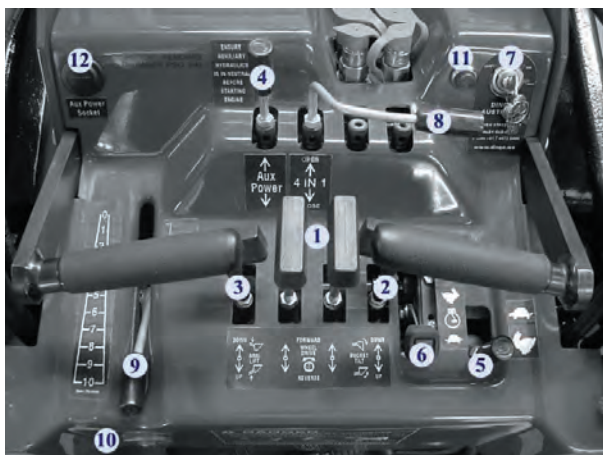
To tilt attachment backward, slowly pull the tilt lever backward.

Loader Arms Lever

To lower Dingo arms, slowly push arm lever forward.

To raise Dingo arms, slowly pull arms lever backward.

Control Panel Diagram



- 1 Drive control levers
- 2 Attachment tilt lever
- 3 Loader arms lever
- 4 Auxiliary hydraulic lever
- 5 Pump selector valve
- 6 Throttle
- 7 Ignition
- 8 4 in 1 Bucket Lever
- 9 Flow Divider
- 10 Hydraulic Immobiliser
- 11 Warning Light
- 12 Auxiliary Power Socket

Auxiliary Hydraulic lever

The auxiliary hydraulics lever allows you to alter the direction of rotation of hydraulically driven attachments or stop them completely.

ATTENTION: Ensure auxiliary hydraulic lever is in neutral position before starting engine. Aside from starting difficulties the attachment may move during starting.

To operate attachment in forward direction, slowly pull auxiliary lever rearward. To operate attachment in reverse direction, slowly push auxiliary lever forward.

Pump Selector Lever

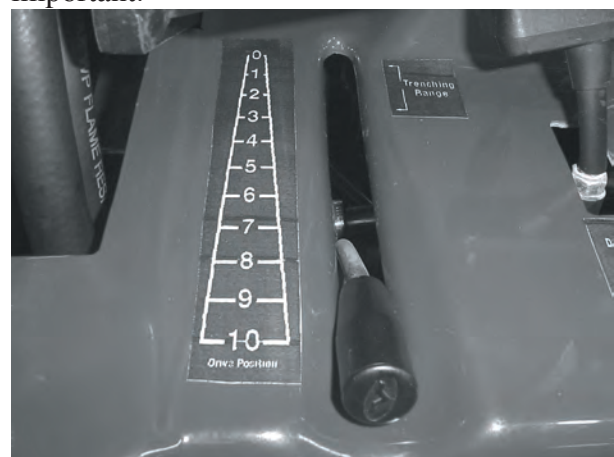
When faster ground speed and lifting speed is required (bucket work) more than attachment speed and power, push the pump selector lever to the rearward position (Hare).

When faster attachment speed and power is required (trenching, post hole digging etc) more than ground speed and lifting power, push the pump selector lever to the forward position (Turtle).

Flow Divider Control

In its normal operating position no flow division is taking place. Moving the lever forward diverts oil flow to the attachment and less is available to the Dingo wheels and arms. This allows for greater concentration of power where it is needed most.

The flow divider is mainly used for trenching, rotary hoeing and stump grinding where it is important for the attachment to have as much power as possible and ground speed is not important.



4in1 Bucket Lever

The 4in1 bucket lever opens and closes the 4in1 bucket. Push the lever forward to open the bucket. Pull the lever backward to close the bucket. When you let go of the lever it will return to the centre and hold the bucket in the current position.

Hydraulic Immobiliser

Each Dingo K9-4 is fitted with a security hydraulic immobiliser. This immobiliser locks the hydraulic system allowing no oil flow to the wheels, thus making it impossible to drive the machine away.

To engage the immobiliser:

1 Push the flow divider all the way forward

2 Push in the immobiliser lock

The flow divider is now locked into position allowing no oil flow to the wheels.

To unlock the immobiliser:

1 Unlock the immobiliser lock using the key

2 Wriggle the flow divider lever to release the lock from the flow divider

3 Move the flow divider lever back to the drive position.

Warning Light

The warning light indicates low engine oil pressure and high engine temperature. Ensure you stop the engine immediately this light comes on. Operating with the warning light on may cause serious engine damage.

Auxiliary Power Socket

The auxiliary power socket is a 12 volt power outlet for running lights, portable air compressors, mobile phone chargers etc. Power is available from the socket when the ignition key is in the ON position. To turn power off turn the key to the OFF position.

Starting the Engine

Stand on the platform. Move the auxiliary hydraulics lever to neutral. Follow instruction on starting engine as detailed in the engine manufacturer's manual.

Stopping the Engine

Refer to the relevant engine manual.

Note: If the engine has been working hard or is hot, let it idle for a minute before turning the ignition key to OFF. This helps cool the engine before it is stopped. In an emergency, turning the ignition key to OFF will stop the engine.

Stopping the Dingo

To stop the machine, move the drive control levers to neutral, lower Dingo arms to the ground, and turn the ignition key to OFF to stop the engine. Remember to remove the key from the key switch.

CAUTION! If children or bystanders attempt to operate the Dingo, someone could be injured. To avoid attempted use by children or bystanders while machine is unattended, remove key from the ignition, even if just for a few minutes.

Moving a Non Functioning Dingo

The best way to move a non functioning Dingo is by forklift or crane. It is also possible to push or tow a Dingo without the use of the engine. By adjusting the Over Centre Valve it is possible to free up the hydraulic circuit, allowing the wheel motors to turn freely. Please call your nearest Dingo service centre for more information.

Using Cylinder Locks

IMPORTANT: Normal maintenance should be completed with the Dingo arms lowered. If maintenance or repairs requires the Dingo arms raised, use cylinder lock provided with Dingo.

WARNING! Dingo arms may lower when in the raised position. Anyone under the Dingo arms could be injured or crushed. To avoid this hazard always install cylinder locks or a safety stand. (Contact a Dingo representative if you are unsure).

Attachments

Connecting

IMPORTANT: Use only Dingo approved attachments. Attachments can change stability and operating characteristics of the machine. The warranty of the machine may be voided if used with unapproved attachments.

IMPORTANT: Before connecting any attachments to the machine, make sure mount plates are free of any dirt and debris.

- 1 Move pump control lever to slow (turtle) position.
- 2 Slowly push the attachment tilt lever forward to tilt the attachment mount plate forward.
- 3 Position mount plate into the upper lip of the attachment's receiver plate.
- 4 Raise the Dingo arms while tilting back the mount plate at the same time.
- 5 **IMPORTANT:** The attachment should be raised enough to clear the ground and the mount plate tilted all the way back.
- 6 Turn the ignition key to OFF to stop the engine.
- 7 Engage the attachment lock pins (the lock pins should go down 15mm as they turn). **Note:** Lock pins are located on the outer edge of the mount plate and should be turned towards the inside to engage.
- 8 **Note:** Proceed to next step if auxiliary hydraulics are required with attachment.
- 9 **IMPORTANT:** Make sure all foreign matter is cleaned from hydraulic connections before making connections.
- 10 With the engine turned off move the auxiliary hydraulics lever to the forward, backward, and back to neutral position to relieve hydraulic pressure at the hydraulic couplers.
- 11 Remove protective plugs from the hydraulic couplers on the Dingo (The hydraulic couplers are located on the inside of the left arm). Connect plugs together to prevent contamination during operation.
- 12 Slide collar back on hydraulic coupler and connect attachment couplers to machine couplers. There will be two connections to

make.

13 Confirm that connection is secure by pulling on the hoses.

14 Connecting the **4in1 Bucket** is done in the same way except the receiving couplers for the 4in1 bucket are located on the inside of the right arm of the Dingo. No mistake can be made as the 4in1 couplers are smaller and will not fit the auxiliary couplers.

Disconnecting

- 1 Lower attachment to the ground or onto a trailer.
- 2 Turn the ignition key OFF to stop the engine.
- 3 Move the auxiliary hydraulics lever forward, backward and back to neutral position to relieve hydraulic pressure at the hydraulic couplers.
- 4 Slide collar back on the hydraulic coupler and disconnect attachment couplers from machine couplers. (Note: if this is difficult return to step 3 and repeat).
- 5 **IMPORTANT:** Connect attachment hoses together to prevent contamination during storage.
- 6 Install protective caps onto Dingo's hydraulic couplers.
- 7 Disengage the attachment lock pins by turning them to the outside.
- 8 Start engine, tilt the mount plate forward and back machine away from the attachment.

Maintenance

It is essential to maintain the engine as detailed in the engine manual. Service recommendations will vary depending on your engine type, refer to your engine manual for this information.

Any information relating to the engine in the following table is intended as a guide only.

Refer to the Pre Start Up section for maintenance that should be completed before starting the Dingo (each and every time).

Maintenance Schedule

Frequency	Engine Type	Maintenance Required	Ref for Info
Every 25 Hours	All	Check hydraulic oil level and check external leaks	Page 16
		Check bushes & replace if required	Page 15
First 50 Hours	Diesel	Change Engine Oil & Filter	Engine Manual
	All	Check hydraulic pressures. (Available free from your local Branch)	.
Every 50 Hours	All	Check hydraulic oil level and check external leaks	Page 16
		Check Hydraulic hose connections and tighten if required	.
		Check tyre pressure	Page 10
		Replace air filter element if required (1)	Page 15
		Check for fuel leaks	.
		Check battery electrolyte uid level	Engine Manual
		Clean spark plugs (petrol only) Replace if required	.
		Tighten wheel nuts	.
		Test all functions of operation	.
Every 100 Hours	Petrol	Change engine oil & filter	Engine Manual
		Replace fuel filter	Engine Manual
	All	Replace air cleaner element (1)	Page 15
		Check battery electrolyte uid level	Engine Manual
	Diesel	Check fan belt tension, Clean radiator fins & radiator hoses	.
		Change Engine Oil & Filter	Engine Manual
Replace fuel filter		Engine Manual	
Every 500 Hours	All	Change Hydraulic Oil & clean hydraulic oil tank	Page 16
		Change Hydraulic Filter	Page 16
		Remove sediment in fuel tank	Page 16
	Petrol	Have UTE bendix starter drive serviced (2)	Engine Manual
		Have solenoid shift starter disassembled and cleaned (2)	
	Diesel	Check fuel injection nozzle, Check fuel injection timing (2)	Engine Manual
		Clean cooling water passage	
		Adjust the intake and exhaust valve clearances (2)	

Notes

- (1) More frequently in dusty/dirty areas. IMPORTANT: refer to notes on air filter on Page 16
- (2) The authorised dealer of your engine type should perform these items

Dingo Starter Pack

It is recommended that some parts be kept on hand for maintenance purposes at all times. The following pack is excellent value, being considerably cheaper than purchasing the parts individually. Please phone your Dingo representative for current pricing of this kit. It may be necessary to add to this kit depending on which attachments you have.

- 10 Bushes/Bearings & Pins to suit
- 6 Bearing Seals (if required)
- 1 Bush/Bearing Drift (used for changing bushes/bearings)
- 1 Hydraulic Return Filter
- 1 Fuel Filter
- 1 Engine Oil Filter to suit specific motor
- 1 Air Cleaner Element Inner
- 1 Air Cleaner Element Outer
- 1 Drive chain & Joining Link

Air Filter

IMPORTANT:

The air filter is of extreme importance. It ensures the air entering the engine is clean. Dirty air will equate to greatly reduced engine life. The time interval between changes of air filter will depend on the operating conditions. Change of air filter is recommended as opposed to cleaning of the air filter.

Although the service schedule recommends 50 hour intervals between changes of the air filter, **if dusty conditions prevail, then 8 hours could be too long.**

Never blow out your air filter with compressed air. (This may put holes in element)

If the filter or filter housing is damaged, stop the engine immediately and replace the damaged components. Failure to stop work when the air filter or housing is damaged could result in permanent damage.

Bushes/Bearings & Pins

Your Dingo has 9 bushes/bearings and 10 pins. These are located on either end of the hydraulic cylinders and on all pivot points of the lift

arms.

These bushes/bearings are wear parts and require regular inspection. (Once a week)

To check the condition of the bushes/bearings:

- 1 Remove attachment from the front of the Dingo
- 2 Raise the arms until the mount plate is at waist height
- 3 Grab the mount plate and wriggle back and forth to try and identify any movement in any of the joints in the mount plate
- 4 Grab the arms and wriggle up and down to detect any movements in joints in the arms.

It is essential that bushes/bearings be replaced on the first sign of wear, or costly damage will occur. Ensure that spare bushes/bearings are on hand at all times.

To replace bushes:

- 1 Undo bolt in tag of pin.
- 2 Slide the pin out of the joint. If any damage to chrome coating on pin, replace pin.
- 3 Use bush drift (part - 4DDRIFT) to punch bush from joint.
- 4 Use bush drift to insert new bush. Careful not to damage te on inner coating of bush.
- 5 Use emery paper or similar to clean joint surfaces (allows pin to slide in easier)
- 6 Slide pin back into place. Avoid using hammer to force pin back into position. This can damage the bush.
- 7 Replace locking bolt.

Engine Oil

Refer to the engine manual for required frequencies of oil changes, oil types, crankcase capacity and viscosity.

Changing / Draining Oil

- 1 Start the engine and let it run for 5 minutes. This warms the oil so it drains better.
- 2 Park the Dingo so the drain side is slightly lower to ensure that the oil drains completely.
- 3 Then lower the Dingo arms, chock the wheels and turn the ignition key to OFF to stop the engine. Remove the key.
- 4 Place the end of the hose in a pan.
- 5 Remove bung by turning counter clockwise while holding the nut. Allow to drain.
- 6 When oil has drained completely, replace the bung.

Note: Dispose of used oil in accordance with local authority regulations.

7 Slowly pour approximately 80% of the specified amount of oil (refer to engine manual) into the filler tube. Now check the oil level. Slowly add additional oil to bring to FULL mark on dipstick.

Changing Oil Filter

Refer to engine manual.

Spark Plugs

Removing, checking and cleaning spark plugs (petrol only) - refer to engine manual.

Fuel Filter

Replace the fuel filter after every 100 hours or yearly, whichever occurs first.

- 1** Never reinstall a dirty filter.
- 2** Lower the Dingo arms and turn the ignition key to OFF to stop the engine. Remove the key.
- 3** Turn fuel tap off (by turning clockwise) to block fuel flow. (Tap on diesel is lever on filter and will be in horizontal position when off, tap on petrol models is a knob on the petrol tank and should be tightened to close / turn off).
- 4** Squeeze the ends of the hose clamps together and slide them away from the filter.
- 5** Place a drain pan under the fuel line to catch any spillage, then remove the filter from the fuel lines.
- 6** Install a new filter and move the hose clamps close to the filter.
- 7** Remove clamp blocking fuel flow.

Draining the Fuel Tank

DANGER! Petroleum can be extremely flammable and highly explosive. To avoid a fire or explosion that may burn yourself, others, or cause property damage:-

- Drain petrol from the fuel tank when the engine is cold. Do this outdoors in an open area.
- Wipe up any petroleum that spills.
- Never drain petroleum near an open flame or where a spark may ignite petroleum fumes.

- Never smoke while handling fuel.

- 1** Park the Dingo on a level surface, to ensure fuel tank drains completely.
- 2** Lower the Dingo arms and turn the ignition key to OFF to stop the engine. Remove the key.
- 3** Loosen the hose clamp at the fuel filter and slide it up the fuel line away from the fuel filter.
- 4** Pull the fuel line off the fuel filter, open the fuel valve, and allow fuel to drain into a fuel can or drain pan.
- 5** Remove tank, drain completely and flush by tipping tank upside down.
- 6** Reverse procedure to replace clean tank.

NOTE: Now is the best time to install a new fuel filter because the fuel tank is empty.

- 7** Install the fuel line onto the fuel filter.
- 8** Slide the hose clamp close to the fuel filter to secure the fuel line.

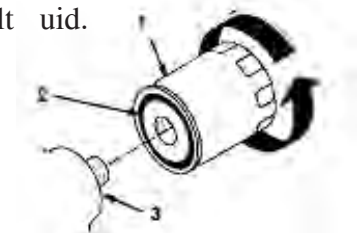
Hydraulic System

Replacing the Hydraulic Filter

Change the hydraulic filter after every 500 operating hours.

IMPORTANT: Do not substitute with automotive oil filter or severe hydraulic damage may result.

- 1** Position the Dingo on a level surface, lower the arms and turn the ignition key to OFF to stop the engine. Remove the key.
- 2** Remove the bonnet and side panels
- 3** Remove the old filter and wipe the filter adapter gasket surface clean.
- 4** Apply a thin coat of hydraulic fluid to the rubber gasket on the replacement filter.
- 5** Install replacement hydraulic filter. Tighten clockwise until the rubber gasket contacts the filter adapter, then tighten the filter an additional 1/2 turn.
- 6** Clean up any spilt fluid.

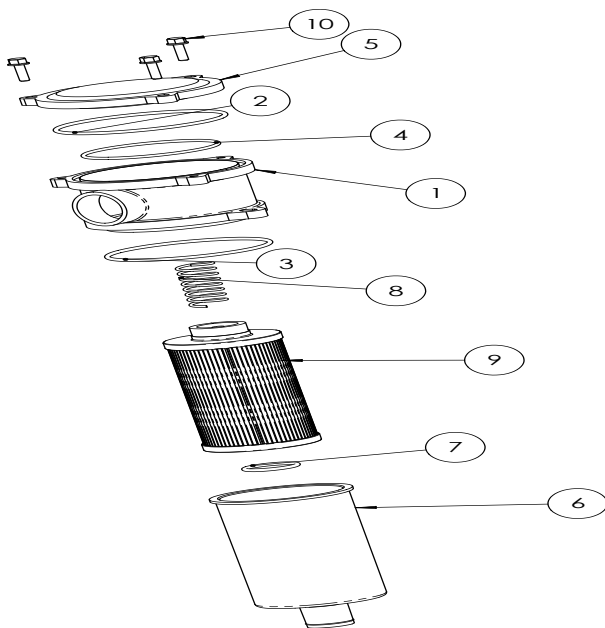


1. Hydraulic Filter
2. Gasket/O Ring
3. Adapter

To Replace Hydraulic Filter(Intank).

Clean the front tank top and grille to ensure there is no debris that can fall onto the tank. Loosen the 3 bolts on top. The cap is under spring pressure. Push down on the cap and remove the 3 bolts. Slowly release the pressure on the cap and remove. Pull filter out. Pull black plastic housing out and clean. Refit housing and refit filter element. Replace centre cap ensuring O-ring is seated correctly. Tighten bolts. Clean any spilt oil.

Item	Qty	Part Number	Description
1	1	.	Oil Filter Housing
2	1	.	4 x 1/8 O-Ring
3	1	.	3 27/32 x 1/8 O-Ring
4	1	.	3 3/16 x 7/64 O-Ring
5	1	.	Housing Cap
6	1	.	Filter Pot
7	1	.	1 1/4 x 1/8 O-Ring
8	1	.	Filter Spring
9	1	.	Filter Element
10	3	111-211-020	Hex Bolt M6x20



Changing the Hydraulic Fluid

Change the hydraulic fluid after every 500 operating hours.

HYDRAULICS FLUID SERVICE SHOULD ONLY BE CARRIED OUT BY YOUR DINGO SERVICE TECHNICIAN IN A CLEAN ENVIRONMENT.

IMPORTANT: Do not substitute with automotive oil or severe hydraulic damage may result.

1 Position the Dingo on a level surface, lower the arms and turn the ignition key to OFF to stop the engine. Remove the key.

2 Place large drain pan under the machine that can hold at least 90 litres.

3 Remove the drain plug from the bottom of the hydraulic tank and allow the fluid to completely drain out.

4 Remove the tank tops (Motor MUST be removed) and wipe out the inside of the tank. If anything unusual is found, consult your Dingo service centre or a hydraulic expert.

5 Install the drain plug.

6 Fill the hydraulic tank with approximately 90 litres of **HVI 68** hydraulic oil.

7. Check fluid level in hydraulic tank and add oil to raise level to 75mm below the top of the tank.

DO NOT OVER FILL.

Note: Dispose of used oil in accordance with local authority regulations. Only use **HVI 68** oil. Use of other oil grades can cause loss of hydraulic power, or damage to machine.

Check Hydraulic Lines

After every 100 operating hours, check hydraulic lines and hoses for leaks, loose fittings, kinked lines, loose mounting supports, wear, weather and chemical deterioration. Replace all moving hydraulic hoses every 1500 or two years, whichever comes first. Make necessary repairs before operating.

WARNING! Hydraulic pressure escaping under pressure can penetrate the skin and cause injury.

Keep hands and body away from pin hole leaks or nozzles that eject high pressure hydraulic fluid. A small leak can be dangerous. To find hydraulic leaks use cardboard or paper.

Battery

Always keep the battery clean and fully charged. Use a paper towel to clean the battery case. If the battery terminals are corroded, clean them with a solution of 4 parts water and 1 part baking soda. Apply a light coating of grease to the battery terminals to reduce corrosion.

Voltage: 12v, 380 Cold Cranking Amps.

If battery becomes flat or machine is not used for a long period, charge the battery using an external battery charger. Disconnect battery terminals before charging the battery. Do not rely on the engine's charging system to recharge a battery. It is only meant to maintain charge in a good battery.

If fluid is accidentally injected into the skin a doctor familiar with this type of injury must surgically remove it within a few hours.

Cleaning and Long Term Storage

1 Lower the Dingo arms and turn the ignition key to OFF to stop the engine. Remove the key.

2 Remove dirt and grime from the external parts of the entire machine, especially the engine. Clean dirt and chaff from the outside of the engine's cylinder head fins and blower housing.

3 IMPORTANT: You can wash the Dingo with mild detergent and water. Do not pressure wash the machine. Avoid excess use of water, especially near the control panel, hydraulic pumps and motors.

4 Service the air cleaner; refer to section on Air Cleaner.

5 Change the crankcase oil; refer to engine manual.

6 Petrol machines only; Remove the spark plugs and check their condition; refer to section on Spark Plugs.

7 With spark plugs removed from the engine, pour two tablespoons of engine oil into each spark plug hole.

8 Now use the starter to crank the engine and distribute the oil inside the cylinder.

9 Install the spark plugs. Do not install the ignition wire on the spark plugs.

10 Check the tyre pressure; refer to section on Tyre Pressures.

11 Charge battery; refer to Batteries section.

12 For long-term storage (more than 90 days) add stabiliser/conditioner additive to fuel tank.

13 Run engine to distribute conditioned fuel through the fuel system (5 minutes).

14 Stop engine, allow to cool and drain the fuel tank; refer to section on Fuel Tank.

15 Restart engine and run it until it stops. Repeat, on "CHOKE" until engine will not restart.

16 Dispose of fuel properly. Recycle according to local codes.

NOTE: Do not store stabiliser/conditioned petrol over 90 days.

17 Check and tighten all bolts, nuts screws. Repair or replace any part that is damaged or defective.

18 Store the machine in a clean, dry garage or storage area. Remove the key from the ignition switch and keep it in a memorable place. Cover the machine to protect it and keep it clean.

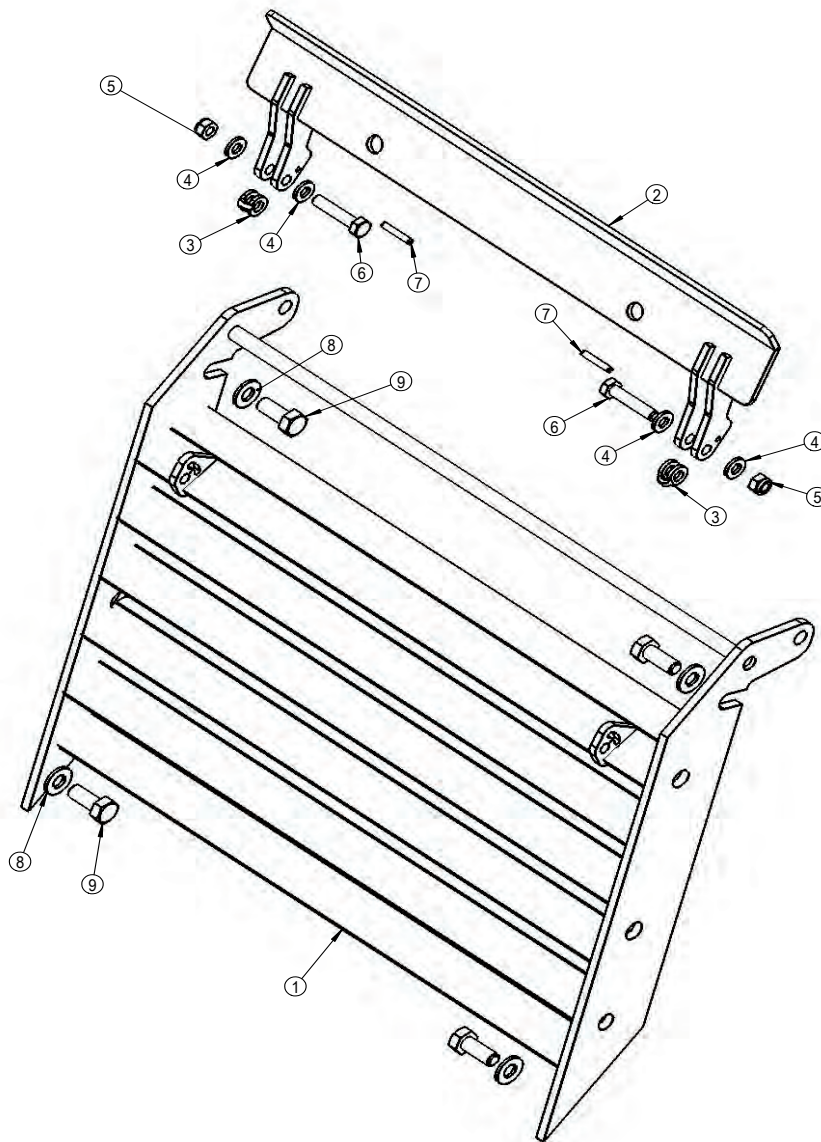
Transporting and Securing

IMPORTANT: Do not operate or drive Dingo on roadways.

IMPORTANT: When transporting your Dingo on a trailer, always use the following procedure.

1. Never load or unload the Dingo on the trailer unless the trailer is attached to the vehicle.
2. Always climb the ramps with the heavy end of the machine up hill. E.g. With heavy attachments like the trencher or backhoe attached to the Dingo, climb the ramps in the forward direction. With no attachment on the Dingo, climb the ramps in the reverse direction.
3. The bucket, post hole digger and leveller attachment should always be positioned in their designated positions on the trailer. This will help ensure that the weight is distributed correctly on the trailer.
4. Ensure the load is positioned so that there is more weight forward of the trailer axle than behind the axle. Too much weight behind the axle may cause the rear of the vehicle to become too light.
5. Once in position on the trailer lower the Dingo arms
6. Turn the key to Off to stop the engine.
7. Secure the machine to the trailer with chains or straps using the tie down points on the Dingo arms.
8. When towed by a vehicle not fitted with an electric trailer brake controller, engage the manual breaking system by lifting the manual override stopper on the tow coupling (single axle trailer only).

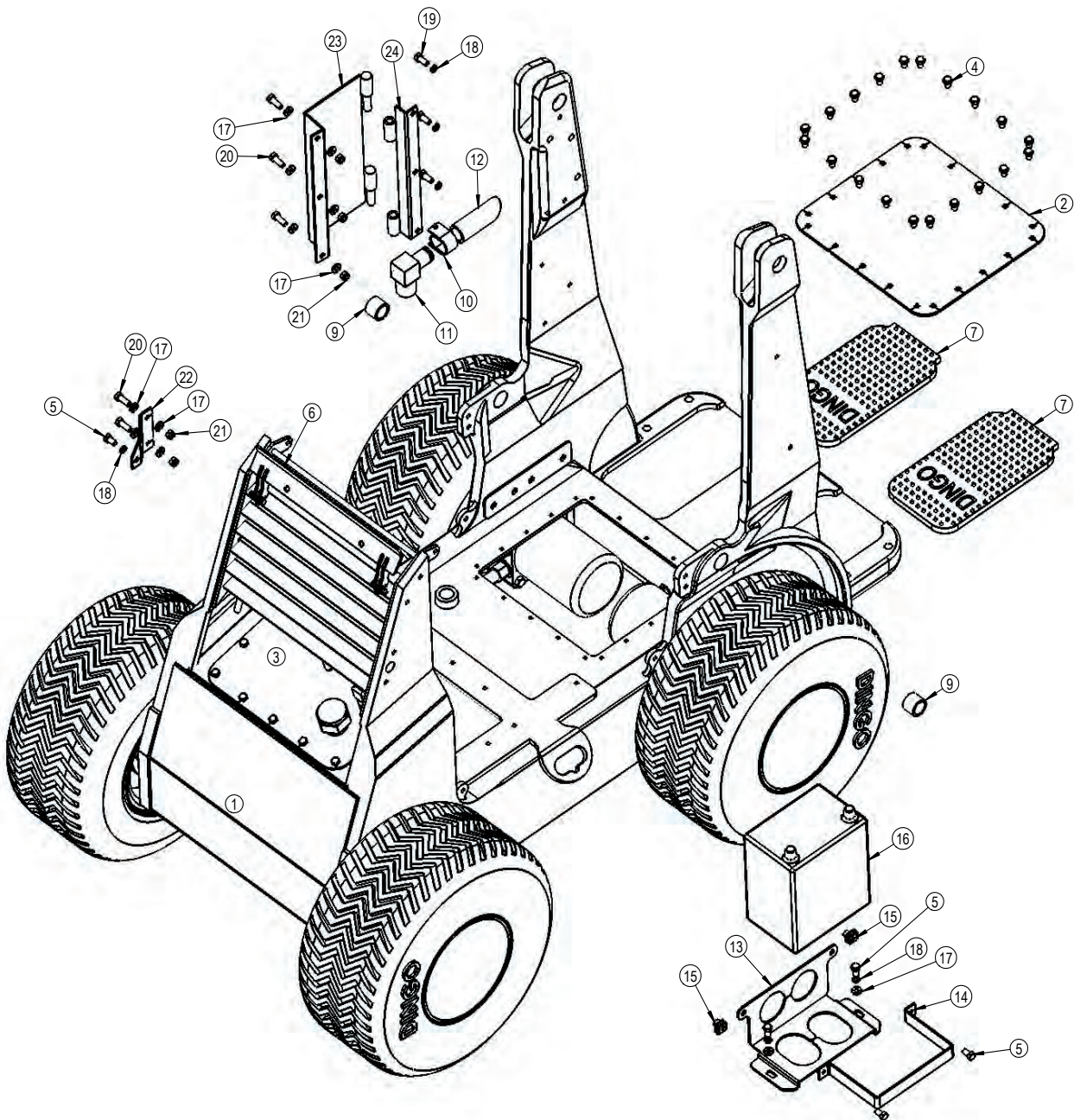
Grill Assembly



Item	Qty	Dingo Part No	Description
1	1	K94078	Grill Bottom
2	1	K94079	Grill Top
3	2	K94084	Grill Nylon Washer
4	4	131-211-002	Plain Washer 1/4" x 1/2"
5	2	122-121-000	Nyloc Nut M6
6	2	111-211-025	Hex Bolt M6 x 25
7	2	100-000-053	Spring Pin Ø1/8" x 3/4"
8	4	131-131-000	Plain Washer M8
9	4	111-311-016	Hex Bolt M8 x 16

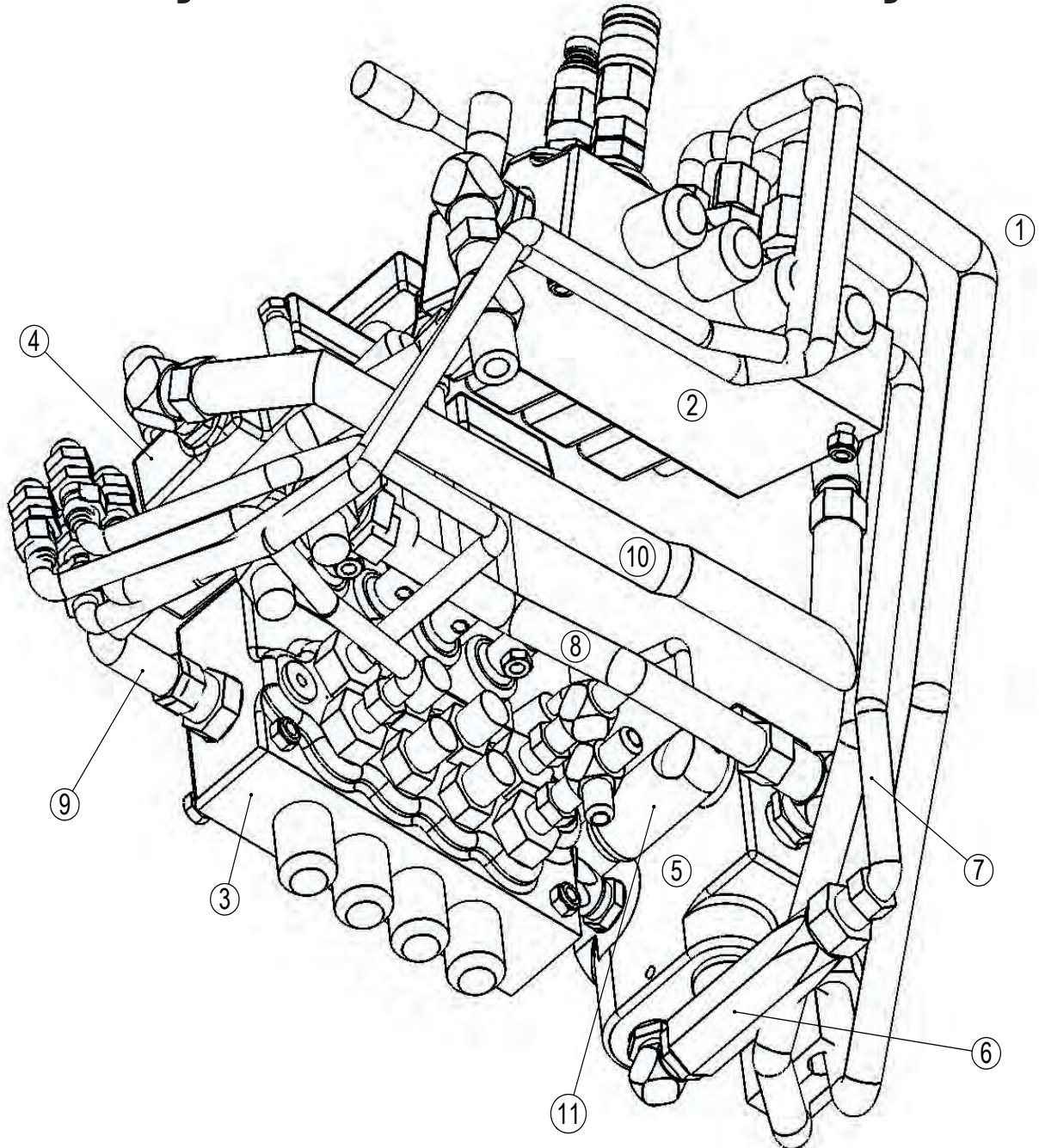
Some Early Machines Were Released With Different Grill.
These Machines Can Be Retrofitted With The Current Style

Chassis Assembly



Item		Dingo Part	Description	Item		Dingo Part	Description
1	1	K94001	Welded Chassis Assembly	13	1	K94022	Raised Battery Bracket
2	1	K94006	Rear Tank Lid	14	1	D95320	Battery Bracket
3	1	K94040	Front Tank (See Page 28)	15	2	120-132-000	M8 Speed Nut
4	32	111-311-012	Hex Bolt M8 x 12	16	1	410-000-013	Battery
5	3	111-311-016	Hex Bolt M8 x 16	17	12	131-131-000	M8 Flat Washer
6	1	K94085	Full Grille Assembly	18	6	132-131-000	M8 Spring Washer
7	2	043-000-045	Rubber	19	3	111-311-020	Hex Bolt M8 x 20
8	4	043-300-020	Foot Plate Plastic Blank	20	5	111-311-025	Hex Bolt M8 x 25
9	2	043-000-056	1" Bush	21	5	122-131-000	Nyloc Nut M8
10	1	300-000-006	Hose Clamp 34mm	22	1	K94050	Front Fuel Tank Catch
11	1	319-381-800	Hydraulic Fitting (CB601616)	23	1	K94056	Fuel Tank Rear Tank Bracket
12	1	345-800-000	Hydraulic Suction Hose	24	1	K94057	Fuel Tank Rear Chassis Bracket

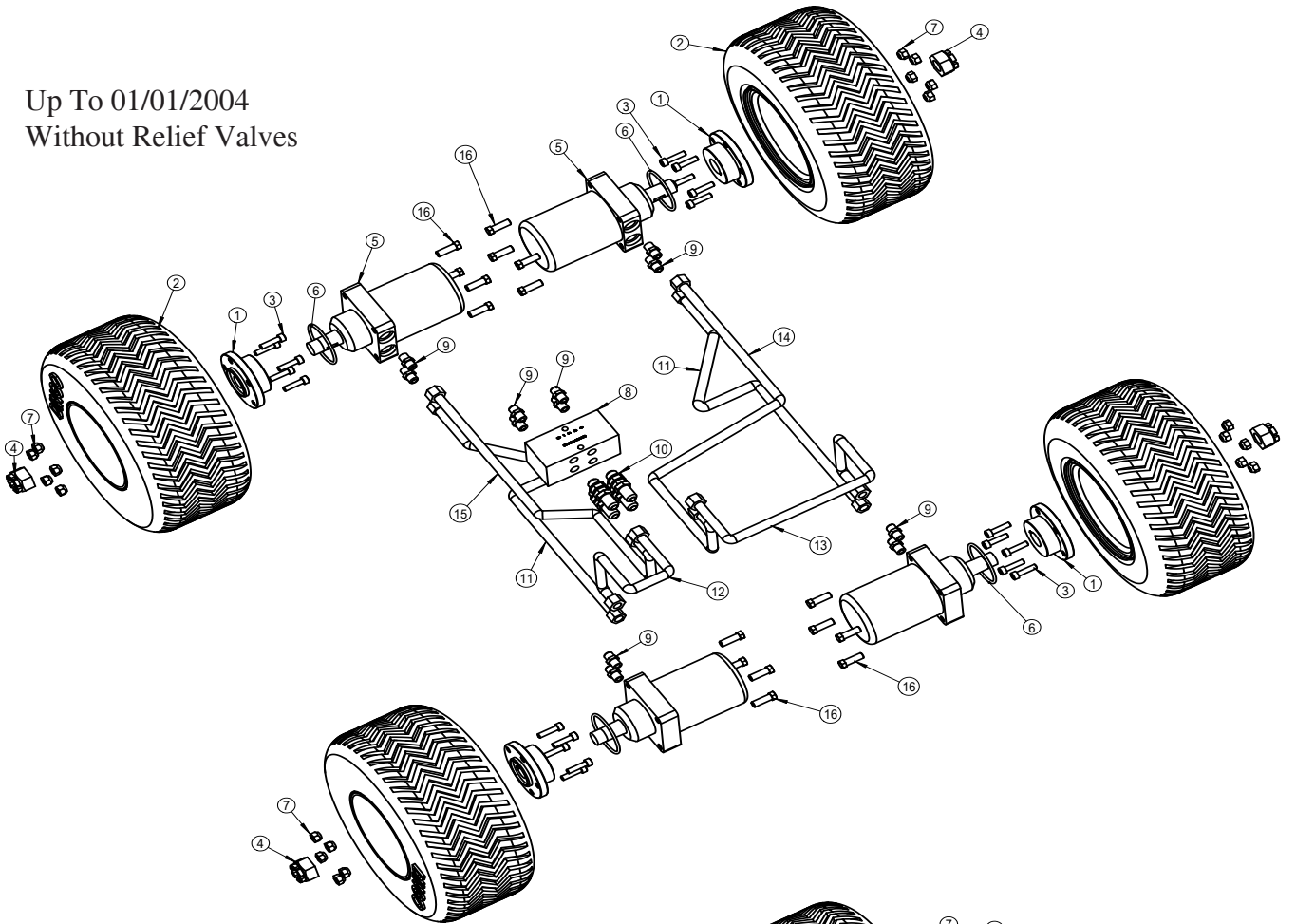
Hydraulic Bank Assembly



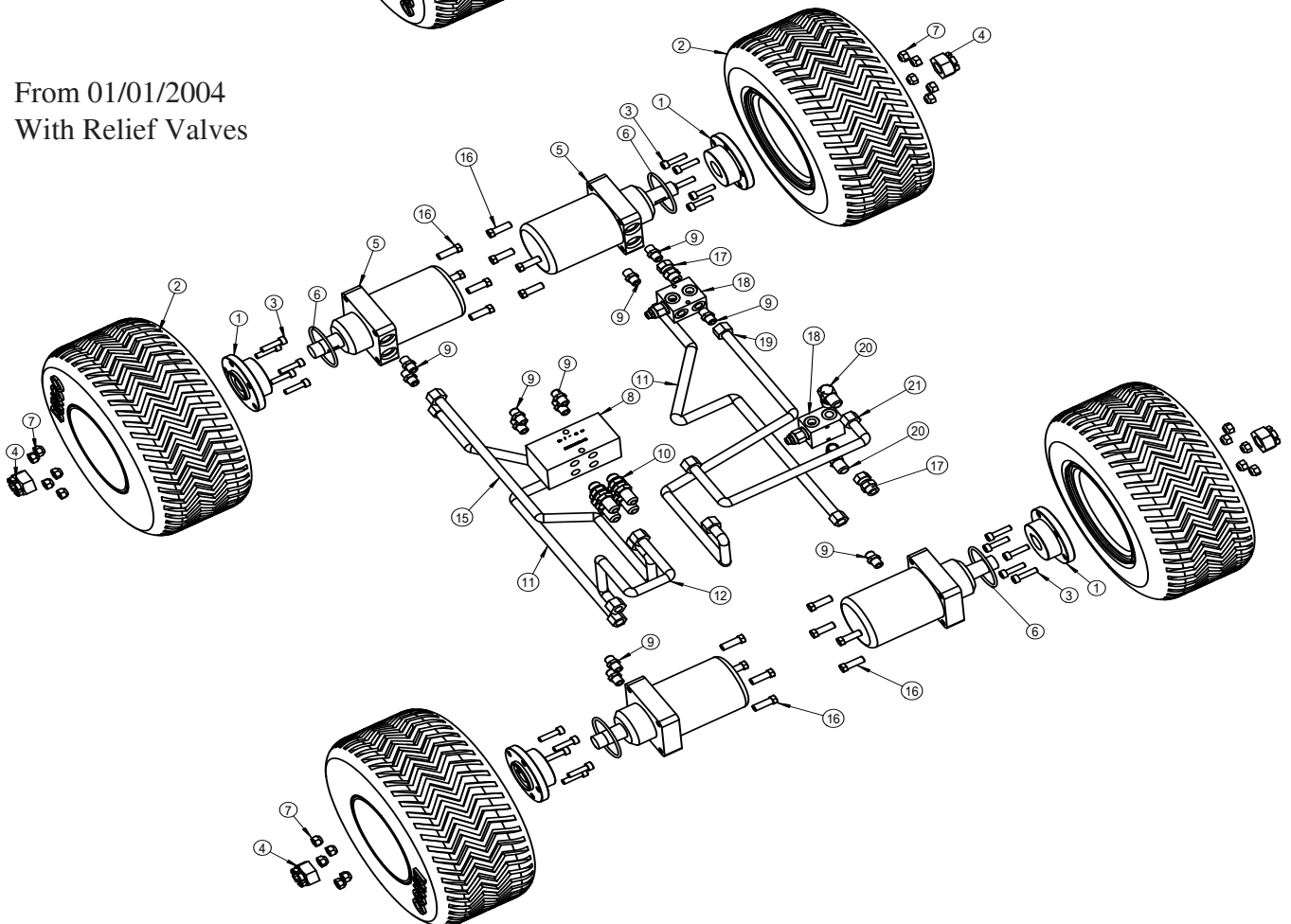
Item	Qty	Dingo Part No	Description
1	1	K94009	Welded Dash Assembly
2	1	330-003-008	Main Control Bank
3	1	330-003-051	Main remote bank
4	1	330-003-035	Pump Selector - SD4
5	1	330-003-052	Flow Control K94
6	1	331-203-002	In-line Check Valve
7	1	K94411	Flow Control To Remote Bank
8	1	K94412	Pipe (FP) - Flow Control To Pump Selector
9	1	K94413	Pipe (CD) - Main Bank To Dump
10	1	K94414	Pipe (AP) - Pump Selector To Remote Bank
11	1	K94033	Immobiliser Assembly

Inner Tank Assemblies

Up To 01/01/2004
Without Relief Valves



From 01/01/2004
With Relief Valves

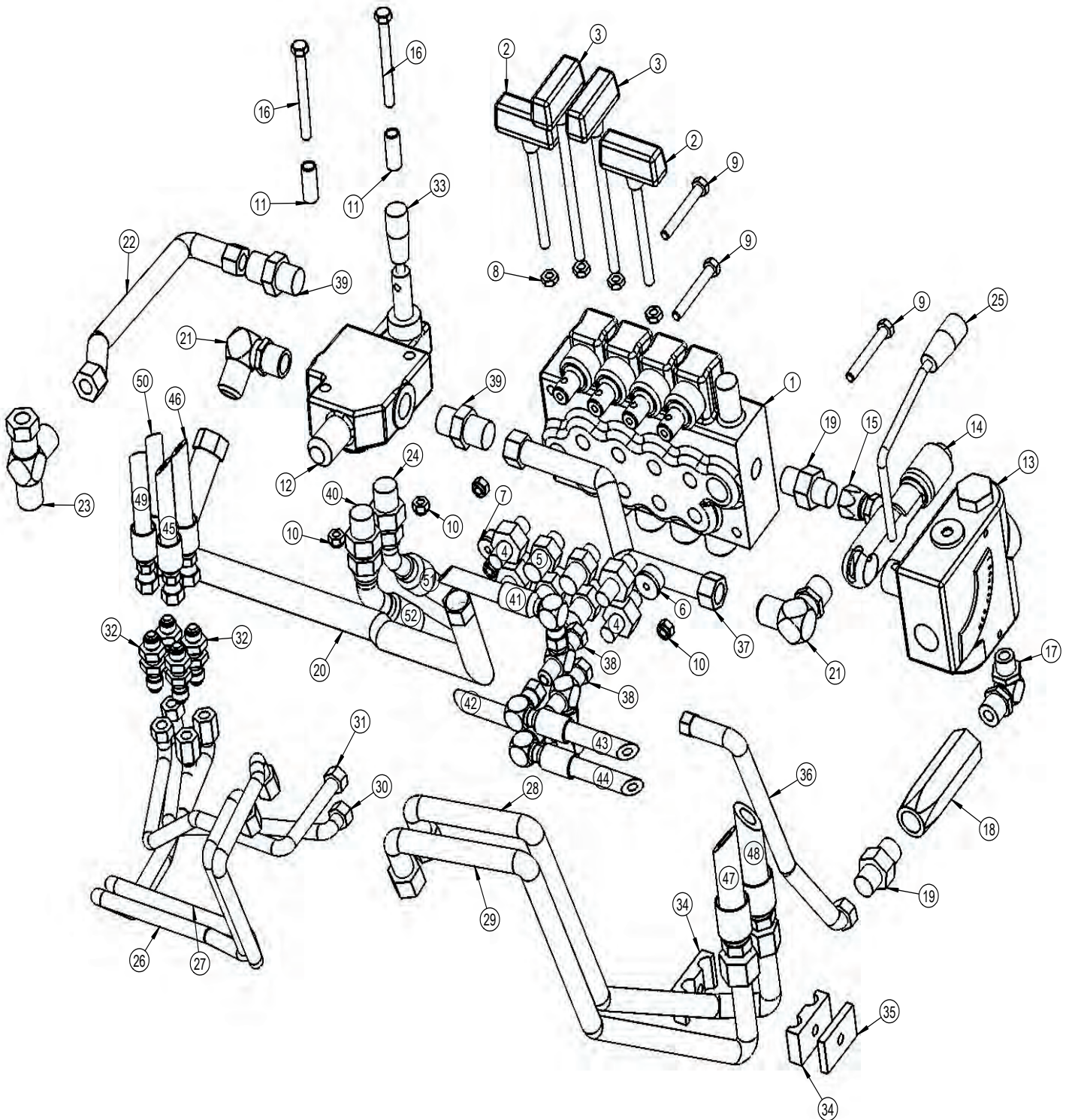


Inner Tank Assemblies

Part Numbers

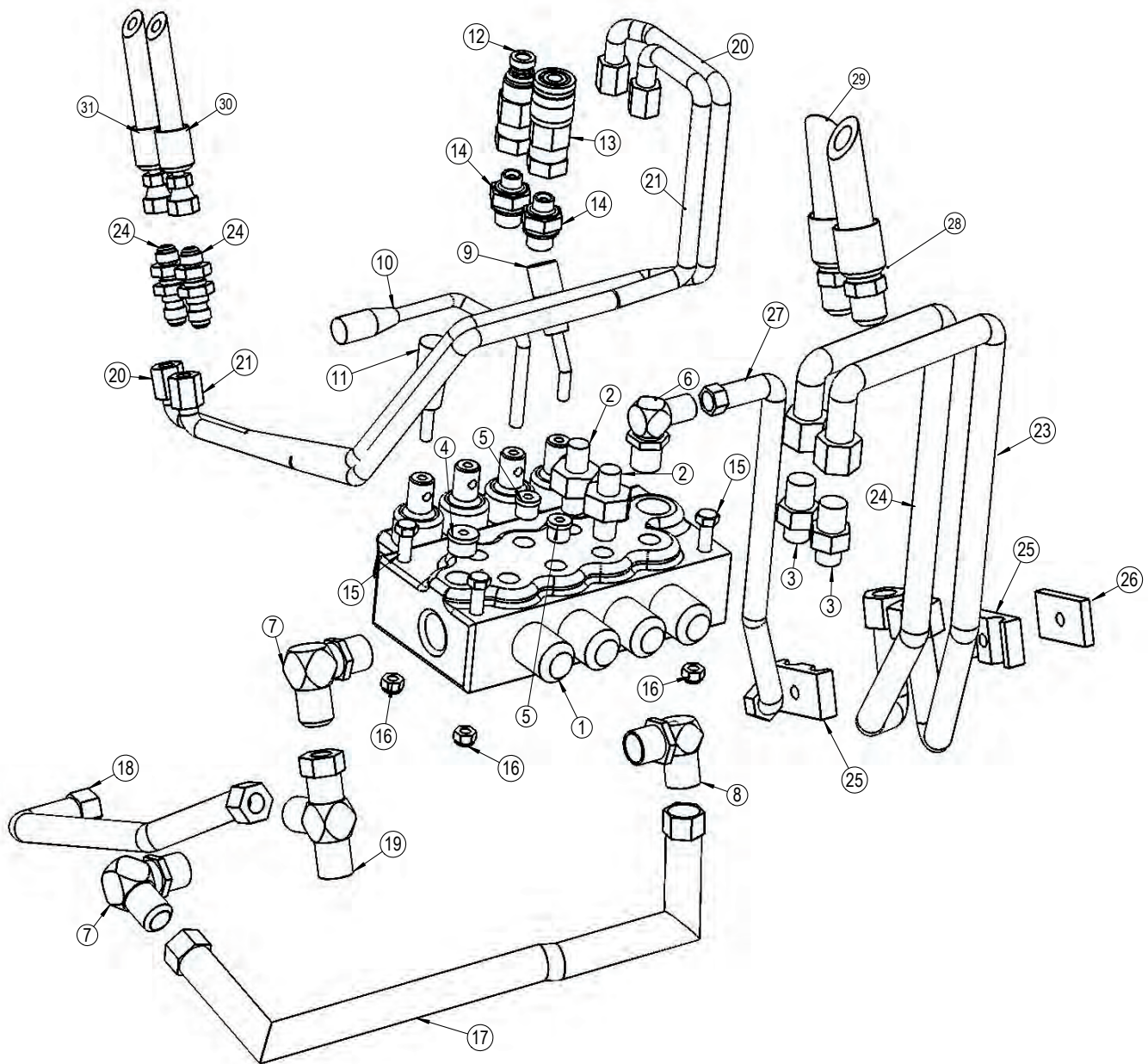
Item	Qty	Dingo Part No	Description
1	4	610-000-031	Wheel Hub 1 3/8" Centre
2	4	613-000-017	Dingo Tyre Trelleborg
3	20	610-000-030	Wheel Stud 7/16" x 1 7/8" UNF
4	4	330-001-007	Nyloc Patch Nut
5	4	330-001-006	Hydraulic Wheel Motor 1 3/8" Shaft
6	4	330-006-029	K94 Wheel Motor O-Ring
7	20	610-000-027	Wheel Nut 7/16" UNF
8	1	330-003-004	Over Centre Valve
9	12	316-797-500	Hydraulic Fitting (C3-1414)
10	4	316-757-500	Hydraulic Fitting (ZC2-1414)
11	2	K94419	Pipe - Wheel Motor Front To Rear (C5)
12	1	K94416	Pipe - Wheel Motor Front Right Top (C2)
13	1	K94418	Pipe - Wheel Motor Front Left Top (No Relief) (C4)
14	1	K94417	Pipe - Wheel Motor Rear Left Top (No Relief) (C3)
15	1	K94415	Pipe - Wheel Motor Rear Right Top (C1)
16	16	113-522-032	Socket Head Cap Screw-UNC 1/2" x 2"
17	2	310-797-600	Hydraulic Fitting (C26-1414)
18	2	330-003-068	Wheel Motor Relief Valve
19	1	K94436	Pipe - Wheel Motor Rear Left Top (With Relief Valve)C3
20	2	315-797-500	Hydraulic Fitting (C59-1414)
21	1	K94437	Pipe - Wheel Motor Front Left Top (With Relief Valve)

Main Control Bank Assembly



Item		Dingo Part No	Description
1	1	330-003-008	Main Control Bank
2	2	K94485	Short Handle (Lift) K94486 (Crowd)
3	2	330-003-031	Long Handle
4	4	316-375-502	Hydraulic Fitting (CR2-0609)
5	4	316-377-501	Hydraulic Fitting (CR2-0614)
6	1	.	Blanking Plug 3/8"
7	1	.	Blanking Plug 1/2"
8	4	121-131-000	Hex Nut M8
9	3	111-311-060	Hex Bolt M8 x 60
10	5	122-131-000	Nyloc Nut M8
11	2	K94435	30mm Spacer
12	1	330-003-035	Pump Selector - SD4
13	1	330-003-052	Flow Control Valve
14	1	K94033	Immobiliser Assembly
15	1	314-374-800	Hydraulic Fitting (CR24-0608)
16	2	111-311-085	Hex Bolt M8 x 85
17	1	315-337-370	Hydraulic Fitting (ZCP53-0606)
18	1	331-203-002	In-line Check Valve (SNDR-061-BP05)
19	2	316-374-700	Hydraulic Fitting (ZCR1-0608)
20	1	K94414	Pipe - Pump Selector To Remote Bank (AP)
21	2	315-477-500	Hydraulic Fitting (CP56-0814)
22	1	K94413	Pipe - Main Bank To Dump (CD)
23	1	317-769-575	Hydraulic Fitting (ZC64-141714)
24	1	316-476-501	Hydraulic Fitting (CR2-0812)
25	1	330-003-018	Flow Control Handle
26	1	K94427	Pipe - Remote Bank to Aux (A3)
27	1	K94428	Pipe - Remote Bank to Small AUX (A4)
28	1	K94426	Pipe - Remote Bank To Aux (A2)
29	1	K94425	Pipe - Remote Bank To Large Aux (A1)
30	1	K94429	Pipe - Main Bank To Crowd Ram Short Hose (T1)
31	1	K94430	Pipe - Main Bank To Crowd Ram Long Hose (T2)
32	4	316-555-500	Hydraulic Fitting (C2-0909)
33	1	K94481	Remote Handle straight
34	2	330-000-018	15mm Hose Clamp Block
35	1	330-000-016	15mm Hose Guide Plate
36	1	K94411	Pipe - Flow Control To Remote Bank (EX)
37	1	K94412	Pipe - Pump Selector To Flow Control (FP)
38	2	317-565-555	Hydraulic Fitting (C64-090909)
39	2	316-477-501	Hydraulic Fitting (CR2-0814)
40	1	316-754-700	Hydraulic Fitting (ZCR2-1408Z)
41	1	K94440	1/4" Hyd-Hose RH Ram Bottom To Control Bank Top (520mm)
42	1	K94441	1/4" Hyd-Hose RH Ram Top To Control Bank Bottom (430mm)
43	1	K94442	1/4" Hyd-Hose LH Ram Bottom To Control Bank Top (395)
44	1	K94443	1/4" Hyd-Hose LH Ram Top To Control Bank Bottom (355mm)
45	1	K94448	1/4" Hyd-Hose Crowd Ram Bottom To Front Fitting (1590mm)
46	1	K94449	1/4" Hyd-Hose Crowd Ram Top To Rear Fitting (1500mm)
47	1	K94450	1/2" Hyd-Hose 1/2" Female Quick Release To Fitting (1150mm)
48	1	K94451	1/2" Hyd-Hose 1/2" Male Quick Release To Rear Fitting (1180mm)
49	1	K94452	1/4" Hyd-Hose 3/8" Female Quick Release To Front Fitting (1105mm)
50	1	K94453	1/4" Hyd-Hose 3/8" Male Quick Release To Rear Fitting (1130mm)
51	1	K94462	3/8" Hyd-Hose Rear Pump To Rear Selector Valve (Diesel) (685mm)
51	1	K94466	3/8" Hyd-Hose Rear Pump To Rear Selector Valve (Petrol) (650mm)
52	1	K94463	1/2" Hyd-Hose Front Pump To Front Selector Valve (Diesel) (610mm)
52	1	K94469	1/2" Hyd-Hose Front Pump To Front Selector Valve (Petrol) (550mm)

Remote Control Bank Assembly



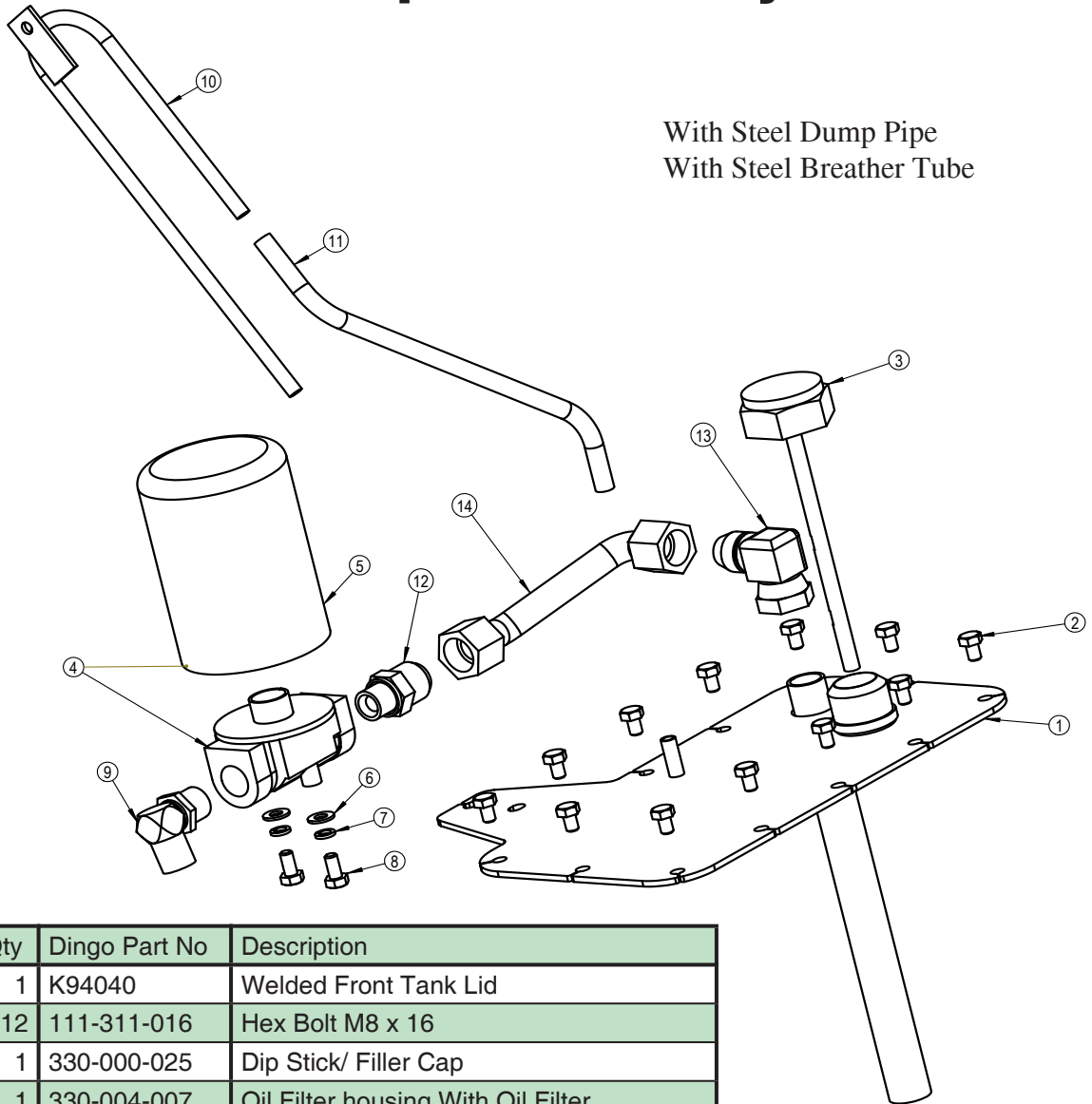
Remote Control Bank Part Numbers

Item	Qty	Dingo Part No	Description
1	1	330-003-051	Remote Bank
2	2	316-375-502	Hydraulic Fitting (CR2-0609)
3	2	316-377-501	Hydraulic Fitting (CR2-0614)
4	1	312-470-000	Blanking Plug 1/2"
5	4	312-370-000	Blanking Plug 3/8"
6	1	315-376-500	Hydraulic Fitting (CP56-0612)
7	2	315-477-500	Hydraulic Fitting (CP56-0814)
8	1	315-377-500	Hydraulic Fitting (CP56-0614)
9	1	K94482	Remote Handle Bent
10	1	K94483	Remote Handle Z Bend
11	1	K94481	Remote Handle Straight. Short
12	1	318-111-100	Male Quick Release Flush Face (2FFI14GASM)
13	1	318-112-100	Female Quick Release Flush Face (2FFIGASF)
14	2	316-372-700	Hydraulic Fitting (CR1-0604)
15	3	111-311-060	Hex Bolt M8 x 60
16	3	122-131-000	Nyloc Nut M8
17	1	K94414	Pipe - Pump Selector To Remote Bank (AP)
18	1	K94413	Pipe - Main Bank To Dump (CD)
19	1	317-769-575	Hydraulic Fitting (C64-141714)
20	1	K94428	Pipe - Remote Bank to 3/8" Aux (A4)
21	1	K94427	Pipe - Remote Bank to 3/8" Aux (A3)
22	1	K94426	Pipe - Remote Bank To 1/2" Aux (A2)
23	1	K94425	Pipe - Remote Bank To 1/2" Aux (A1)
24	2	316-555-500	Hydraulic Fitting (C2-0909)
25	2	330-000-018	15 mm Hose Clamp Block
26	1	330-000-016	15mm Hose Guide Plate
27	1	K94411	Pipe - Flow Control To Remote Bank (EX)
28	1	K94450	1/2" Hyd-Hose 1/2" Female Quick Release To Front Fitting (1150mm)
29	1	K94451	1/2" Hyd-Hose 1/2" Male Quick Release To Rear Fitting (1180mm)
30	1	K94452	1/4" Hyd-Hose 3/8" Female Quick Release To Front Fitting (1105mm)
31	1	K94453	1/4" Hyd-Hose 3/8" Male Quick Release To Rear Fitting (1130mm)

Hydraulic Pipes On K9-4

K9-4							
Qty	Drawing	Pipe No	Description	Kohl	TNE	TNV	Perk
1	K94-411	EX	Flow control to remote bank	✓	✓	✓	✓
1	K94-412	FP	hi/low valve to ow control	✓	✓	✓	✓
1	K94-413	CD	Main bank to dump pipe	✓	✓	✓	✓
1	K94-414	AP	Hi/Low To Aux Bank	✓	✓	✓	✓
1	K94-415	C1	R Rear wheel motor	✓	✓	✓	✓
1	K94-416	C2	R Front Wheel Motor	✓	✓	✓	✓
1	K94-417	.	L Rear Wheel Motor No Relief (Obsolete Use K94436)	✗	✗	✗	✗
1	K94-418	.	L Front Wheel Motor No Relief (Obsolete Use K94437)	✗	✗	✗	✗
2	K94-419	C5	Front to rear wheel motor pipe	✓ ✓	✓ ✓	✓ ✓	✓ ✓
1	K94-420	.	Diesel Dump Pipe (Obsolete was original DD pipe)	✗	✗	✗	✗
1	K94-421	DV1	Diesel Wheel motor 1 c-bank to o/c valve	✗	✓	✗	✓
1	K94-422	DV2	Diesel Wheel motor 2 c-bank to o/c valve	✗	✓	✗	✓
1	K94-423	DV3	Diesel Wheel motor 3 c-bank to o/c valve	✗	✓	✗	✓
1	K94-424	DV4	Diesel Wheel motor 4 c-bank to o/c valve	✗	✓	✗	✓
1	K94-425	A1	Remote to Large Aux 1	✓	✓	✓	✓
1	K94-426	A2	Remote to Large Aux 2	✓	✓	✓	✓
1	K94-427	A3	Remote to Small Aux 1	✓	✓	✓	✓
1	K94-428	A4	Remote to Small Aux 2	✓	✓	✓	✓
1	K94-429	T1	Control Bank to Crowd Hose 1	✓	✓	✓	✓
1	K94-430	T2	Control Bank to Crowd Hose 2	✓	✓	✓	✓
1	K94-431	DD	Diesel Dump Pipe External Filter (Current)	✗	✓	✗	✗
1	K94-436	C3	L Rear Wheel Motor with Relief	✓	✓	✓	✓
1	K94-437	C4	L Front Wheel Motor with Relief	✓	✓	✓	✓
1	K94-438	DDA	Diesel Dump Pipe Internal Filter (Current)	✗	✗	✓	✓
1	K94-476	F1	Filter to Tank Dump	✓	✓	✗	✗
1	K94-492	DV1-2	Diesel Wheel motor 1 c-bank to o/c valve 40mm Rear	✗	✗	✓	✗
1	K94-493	DV2-2	Diesel Wheel motor 2 c-bank to o/c valve 40mm Rear	✗	✗	✓	✗
1	K94-494	DV3-2	Diesel Wheel motor 3 c-bank to o/c valve 40mm Rear	✗	✗	✓	✗
1	K94-495	DV4-2	Diesel Wheel motor 4 c-bank to o/c valve 40mm Rear	✗	✗	✓	✗
1	K94-477	PV1	Petrol Wheel motor 1 c-bank to o/c valve	✓	✗	✗	✗
1	K94-478	PV2	Petrol Wheel motor 2 c-bank to o/c valve	✓	✗	✗	✗
1	K94-479	PV3	Petrol Wheel motor 3 c-bank to o/c valve	✓	✗	✗	✗
1	K94-480	PV4	Petrol Wheel motor 4 c-bank to o/c valve	✓	✗	✗	✗
1	K94-432	PD	Petrol Dump Pipe External Filter (Current)	✓	✗	✗	✗
1	K94-439	PDA	Petrol Dump Pipe Internal Filter (Not Yet Existing)	✓	✗	✗	✗

Tank Top Assembly

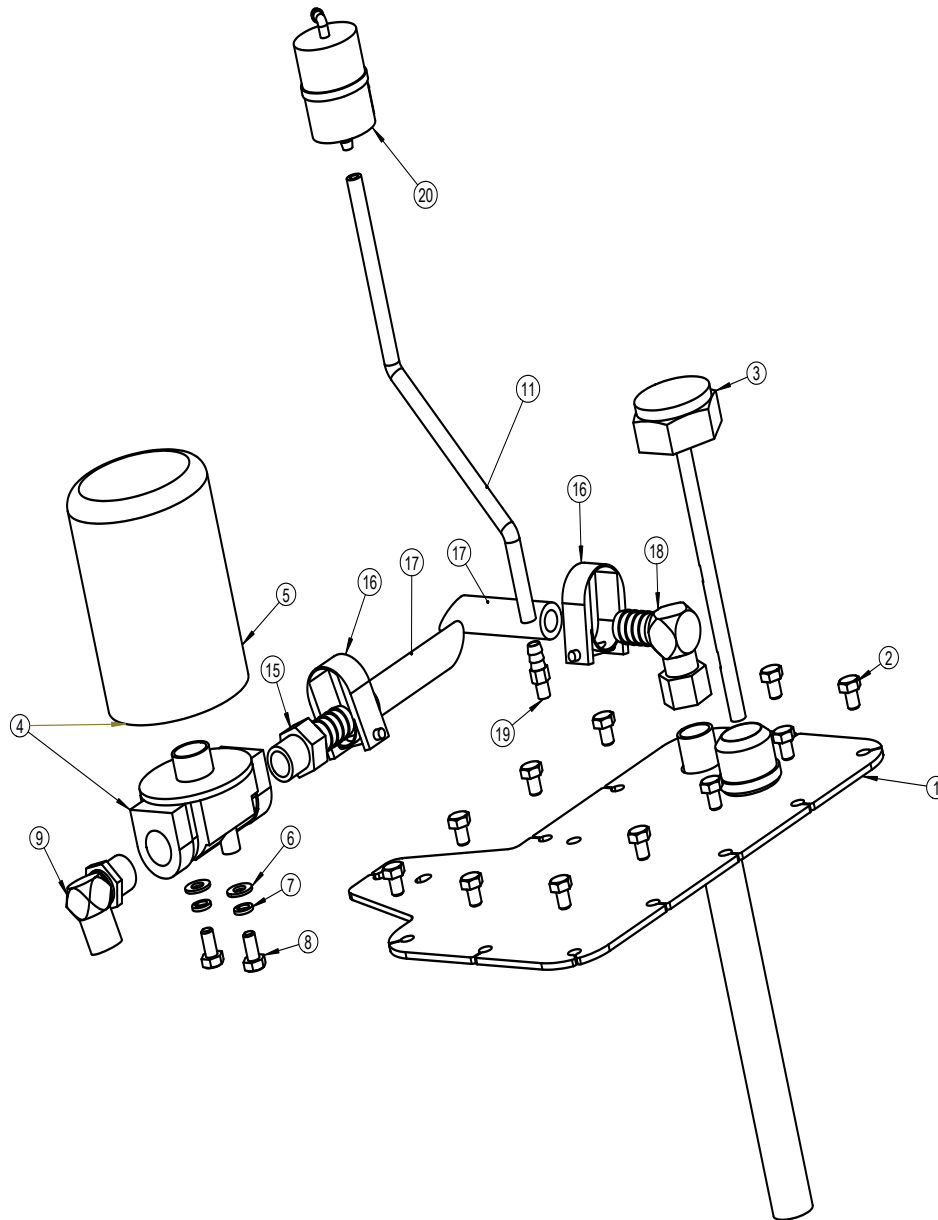


With Steel Dump Pipe
With Steel Breather Tube

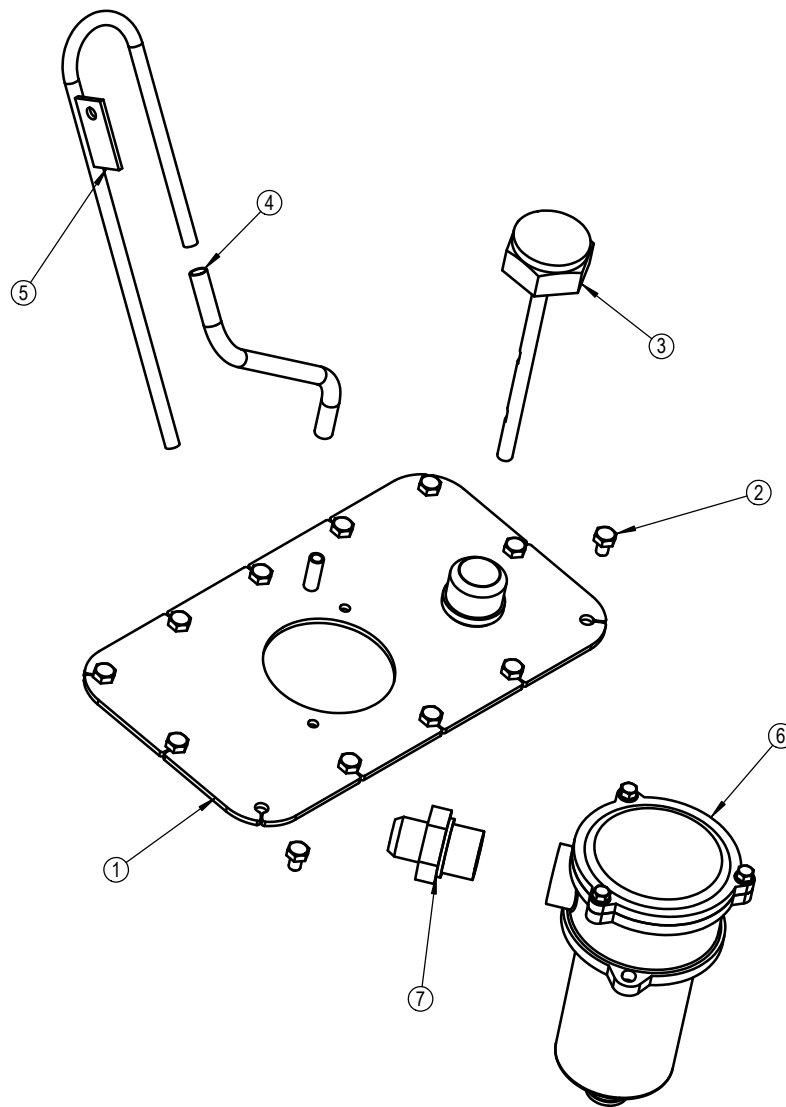
Item	Qty	Dingo Part No	Description
1	1	K94040	Welded Front Tank Lid
2	12	111-311-016	Hex Bolt M8 x 16
3	1	330-000-025	Dip Stick/ Filler Cap
4	1	330-004-007	Oil Filter housing With Oil Filter
5	1	330-004-014	Hydraulic Oil Filter
6	2	131-221-001	Plain Washer M8
7	2	132-221-000	Spring Washer M8
8	2	111-311-016	Hex Bolt M8 x 16
9	1	315-367-950	Hydraulic Fitting (CP56-1217)
10	1	K94083	Hydraulic Tank Breather K94
11	1	.	Hyd Breather Hose Diesel 260mm
11	1	.	Hyd Breather Hose Petrol 310mm
12	1	316-679-500	Hydraulic Fitting (CR2-1217)
13	1	315-368-950	Hydraulic Fitting (BSBP 2JH33)
14	1	K94476	Steel Pipe- F1
15	1	319-167-600	Hose Tail Straight Fitting (LMP1212)
16	2	100-000-057	Hose Clamp 14-27
17	1	345-600-000	3/4" Return Hose
18	1	319-368-600	Hose Tail 90° (LFB90C1212)
19	1	319-111-300	Hose Tail Straight Fitting
20	1	330-000-026	Oil Tank Breather Filter (Z91)

Tank Top Assembly

With Rubber Dump Hose
With Filter Breather Line

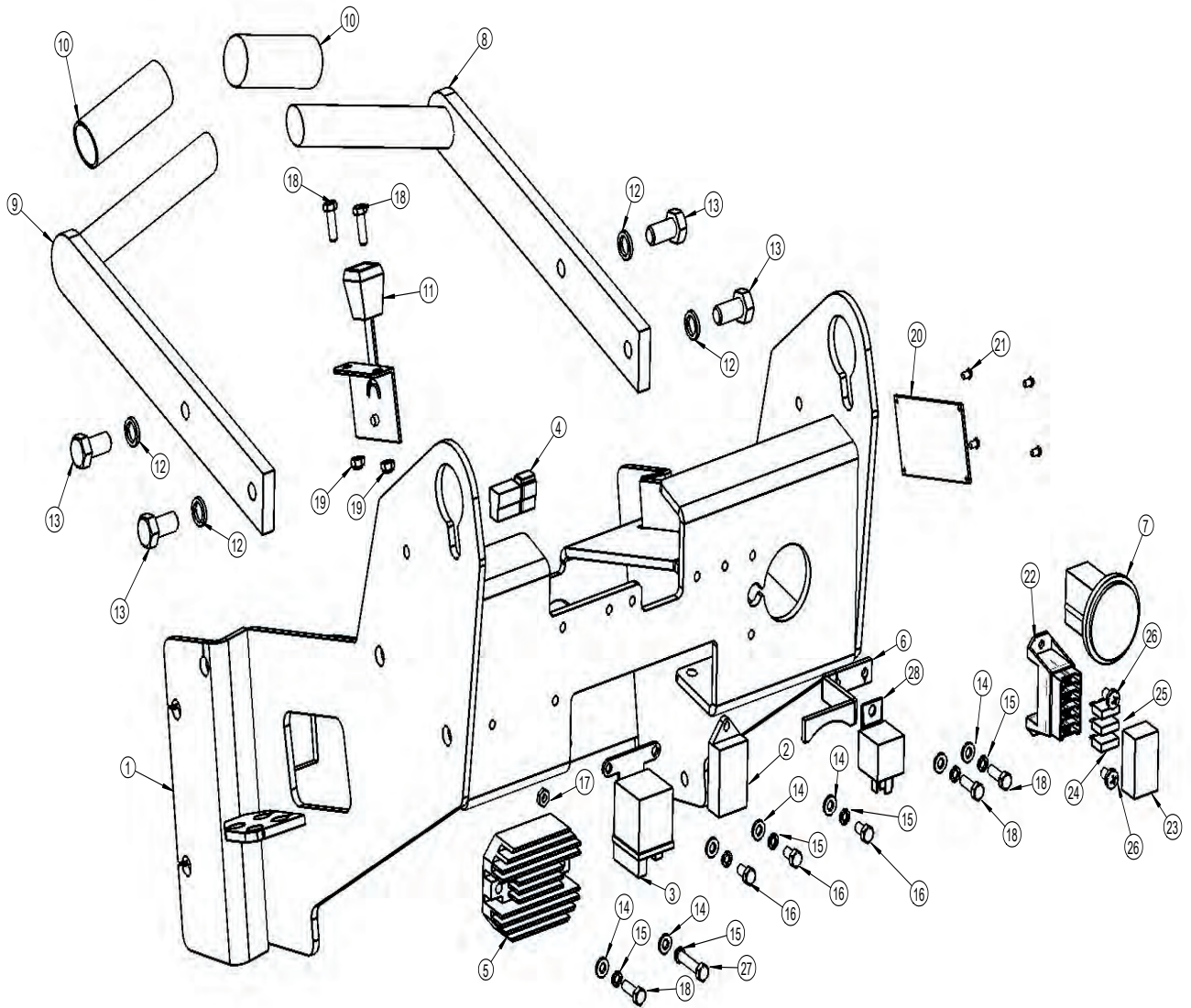


Any combination of the 2 pictures
could be on your machine



Item	Qty	Part Number	Description
1	1	K94107	In Tank Filter Tank Top
2	12	111-311-016	Hex Bolt M8 x 16
3	1	330-000-025	Dip Stick / Filler Cap
4	1	.	Hyd Breather Hose Diesel 260mm
5	1	K94083	Hydraulic Tank Breather K94
6	1	316-879-500	Hydraulic Fitting Nipple (CR2-1617)
7	1	330-004-019	In Tank Filter Assembly (See Page 17)

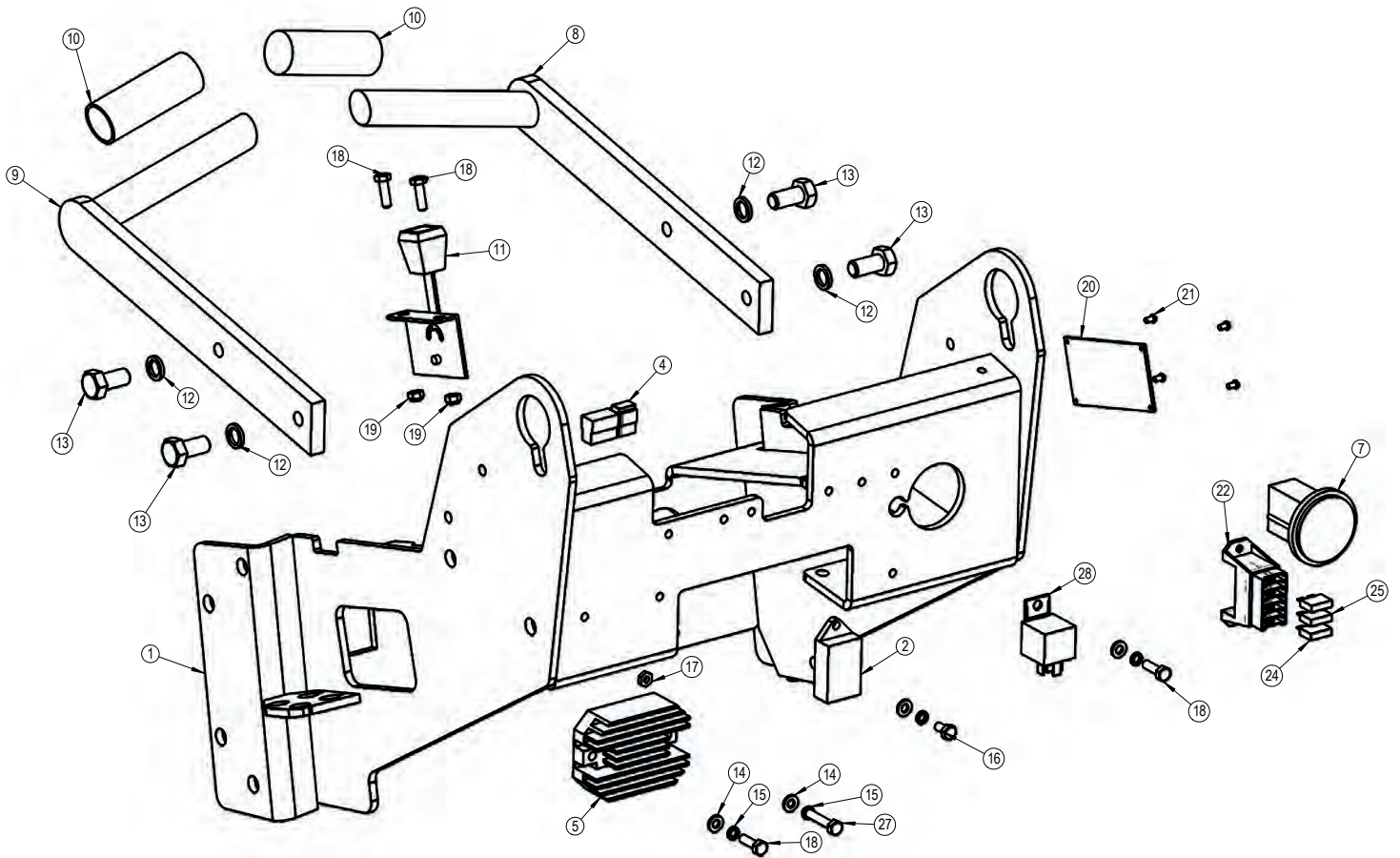
Yanmar Dash Assembly



Yanmar Dash Part Numbers

Item	Qty	Part Nuber	Description
1	1	K94009	Welded Dash Assembly
2	1	518-000-031	Timer Unit (Stop Start Solenoid)
3	1	518-000-025	Relay (Stop/Start Solenoid)
4	1	518-000-024	Diode Fuel Stop Solenoid)
5	1	518-000-054	Voltage Regulator
6	1	K94067	Bonnet Catch
7	1	410-000-048	Hour Meter
8	1	K94043	Left Hand Handle Bar
9	1	K94044	Right Hand Handle Bar
10	2	043-000-043	Handle Grip
11	1	511-000-012	Throttle Cable Assembly
12	4	132-151-000	Spring Lock Washer M12
13	4	111-511-025	Hex Bolt M12 x 25
14	7	131-121-001	Plain Washer 1/4"
15	7	132-211-000	Spring Lock Washer M6
16	3	111-211-012	Hex Bolt M6 x 12
17	1	121-121-000	Nut Hexagonal M6
18	5	111-211-020	Hex Bolt M6 x 20
19	2	122-121-000	Nyloc Nut M6
20	1	021-000-024	K94 Compliance Plate
21	4	100-000-027	Type U Drive Screws 6 x 1/4" ZP
22	1	410-000-119	Fuse Block - 4 Blade With Cover (Early)
22	1	410-000-154	Fuse Block - 4 Blade With Buzz Bar (Late)
24	2	410-000-141	20 Amp Fuse
25	1	410-000-120	15 Amp Fuse
26	2	100-000-061	M6 Button Head Screw
27	1	111-211-035	Hex Bolt M6 x 35
28	1	410-000-059	40 Amp 5 Pin Starter Relay

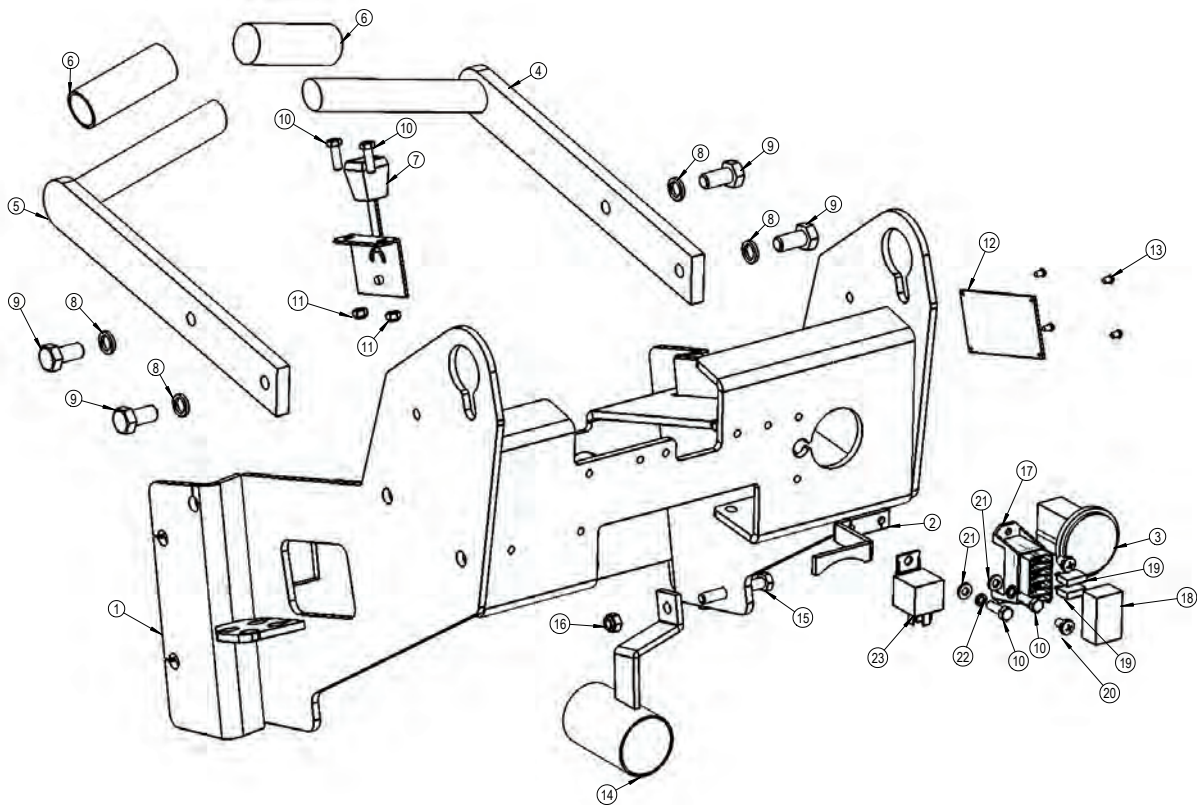
Perkins Dash Assembly



Perkins Dash Part Numbers

Item	Qty	Dingo Part No	Description
1	1	K94009	Welded Dash Assembly
2	1	.	Safety Shutdown
3	1	.	.
4	1	518-000-024	Diode Fuel Stop Solenoid
5	1	.	Voltage Regulator
6	1	.	.
7	1	410-000-048	Hour Meter
8	1	K94043	Left Hand Handle Bar
9	1	K94044	Right Hand Handle Bar
10	2	043-000-043	Handle Grip
11	1	511-000-012	Throttle Cable Assembly
12	4	132-151-000	Spring Lock Washer M12
13	4	111-511-025	Hex Bolt M12 x 25
14	5	131-121-001	Plain Washer M6
15	5	132-211-000	Spring Lock Washer M6
16	1	111-211-012	Hex Bolt M6 x 12
17	1	121-121-000	Nut Hexagonal M6
18	5	111-211-020	Hex Bolt M6 x 20
19	2	122-121-000	Nyloc Nut M6
20	1	021-000-024	K94 Compliance Plate
21	4	100-000-027	Type U Drive Screws 6 x 1/4" ZP
22	1	410-000-154	Fuse Block - 4 Blade With Buzz Bar
23	1	.	.
24	2	410-000-141	20 Amp Fuse
25	1	410-000-120	15 Amp Fuse
26	2	100-000-061	M6 Button Head Screw
27	1	111-211-035	Hex Bolt M6 x 35
28	1	410-000-059	40 Amp 5 Pin Starter Relay

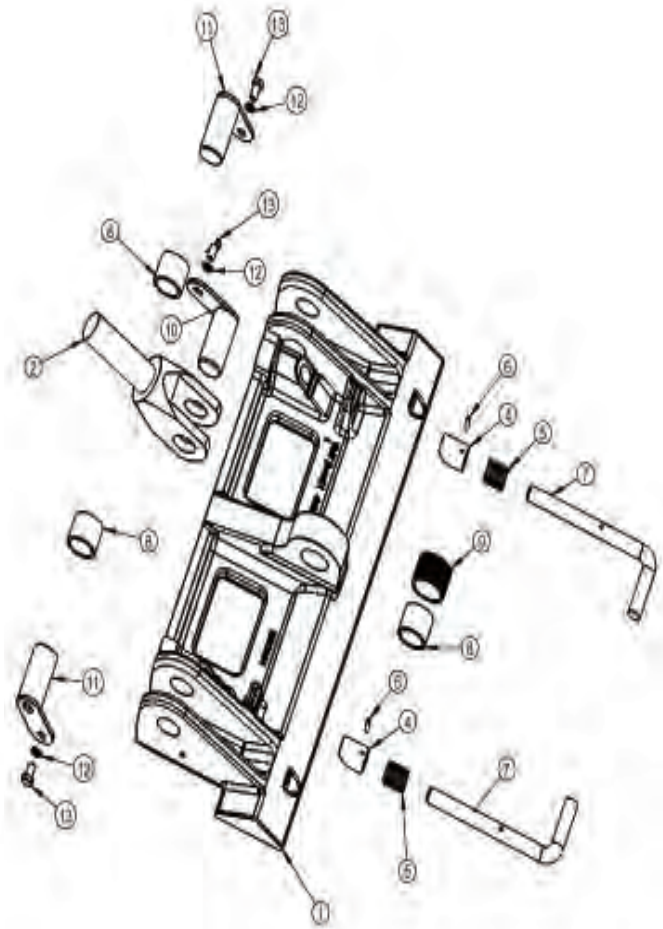
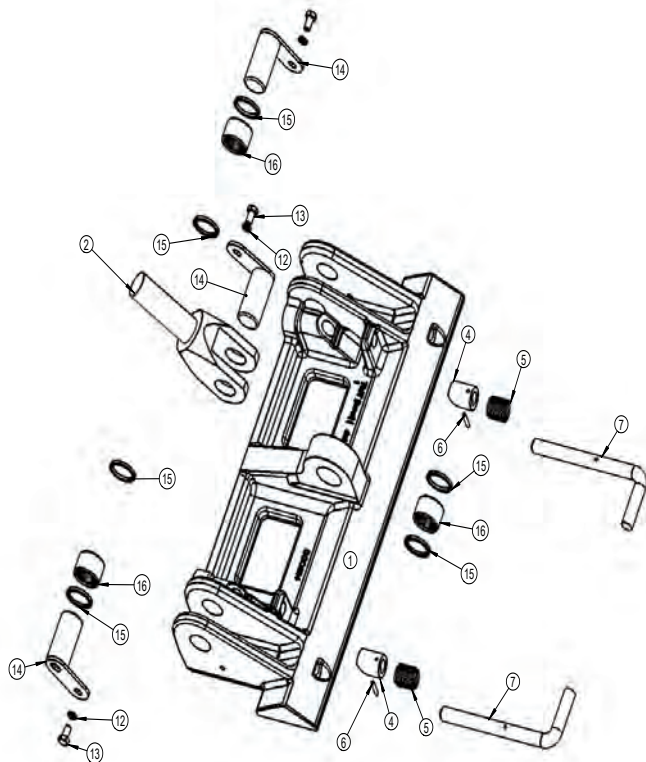
Petrol Dash Assembly Part Numbers



Item	Qty	Part Number	Description
1	1	K94009	Welded Dash Assembly
2	1	K94067	Bonnet Catch
3	1	410-000-048	Hour Meter
4	1	K94043	Left Hand Handle Bar
5	1	K94044	Right Hand Handle Bar
6	2	043-000-043	Handle Grip
7	1	511-000-012	Throttle Cable Assembly
8	4	132-151-000	Spring Lock Washer M12
9	4	111-511-025	Hex Bolt M12 x 25
10	4	111-211-020	Hex Bolt M6 x 20
11	2	122-121-000	Nyloc Nut M6
12	1	021-000-024	Compliance Plate
13	4	100-000-027	Type U Drive Screws 6 x 1/4" ZP
14	1	K94355	Pre Cleaner Assembly
15	1	111-311-060	Hex Bolt M8 x 60
16	1	122-131-000	Nyloc Nut M8
17	1	410-000-119	Fuse Block - 4 Blade With Cover (Early)
17	1	410-000-154	Fuse Block - 4 Blade With Buzz Bar (Late)
18	1	.	Fuse Block Top
19	2	410-000-120	15 Amp Fuse
20	2	100-000-061	M6 Button Head Screw
21	2	131-121-001	Plain Washer M6
22	2	132-211-000	Spring Lock Washer M6
23	1	410-000-059	40 Amp 5 Pin Fan Relay

Mount Plate Assembly & Part List

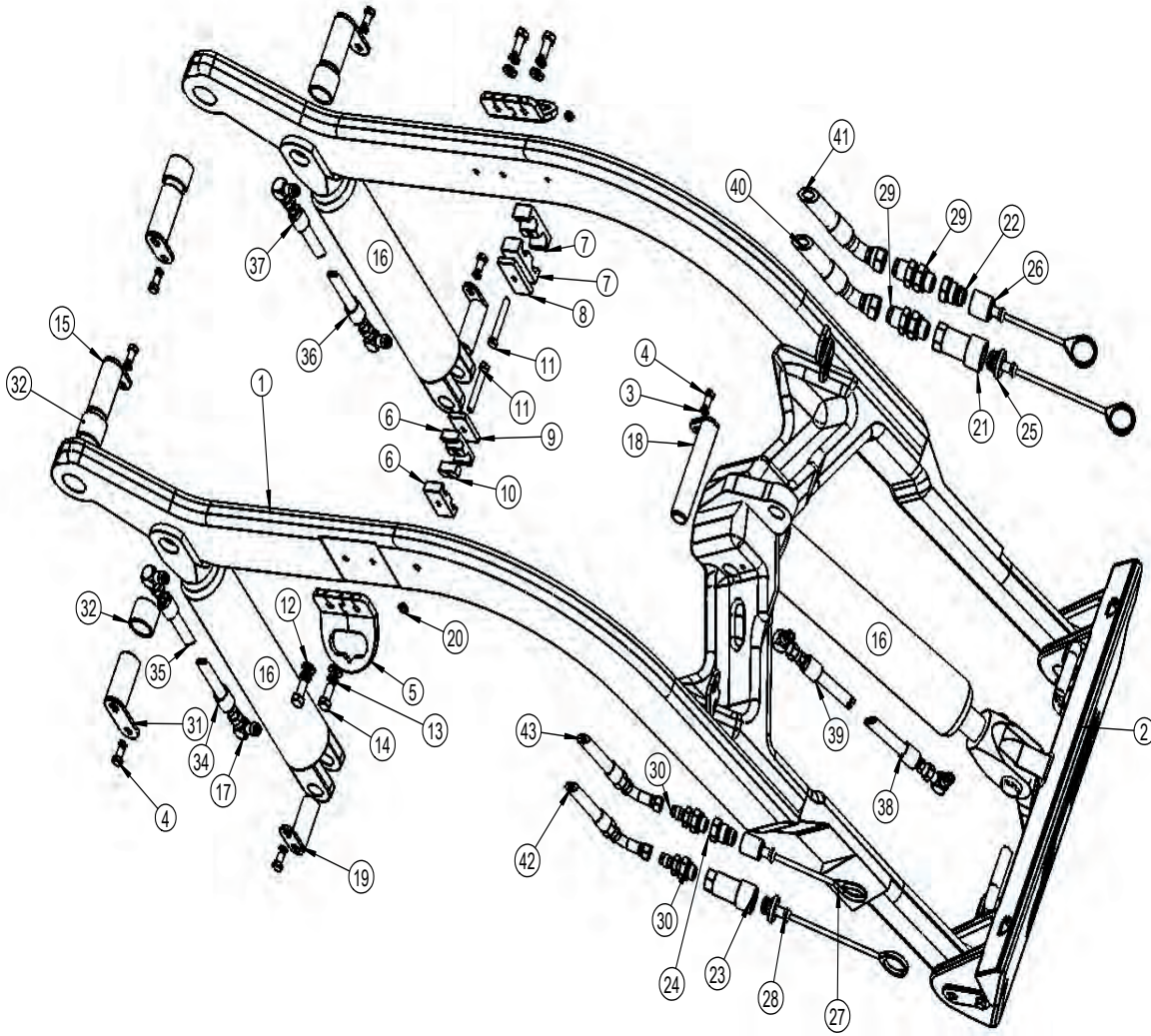
Bearing Type



Bush Type

Item	Qty	Part Number	Description
1	1	K94214	Mount Plate For Bushes inc Q/R Pins
1	1	K94212	Mount Plate For Bearings inc Q/R Pins
2	1	321-000-005	2 1/2" x 8" Lift Ram 1 1/4" Top Clevis
4	2	043-000-020	Bevelled Bush
5	2	043-000-031	Locking Pin Spring
6	2	100-000-025	ROLL PIN 5/32" X 1" B1114
7	2	D95211	Locking Pin
8	3	043-000-057	1 1/2"OD 1 1/4" ID Duralon Bush
9	1	K94213	Steel Bush 1.5" ID1.75"OD 32mm K94214 Mount Plate Only
10	1	K94105	Clevis Pin 1 1/4" x 63mm 50mm Tag Chrome
11	2	K94105	Clevis Pin 1 1/4" x 63mm 50mm Tag Chrome
12	3	132-221-000	5/16" / 8mm Spring Washer
13	3	111-311-016	Hex Bolt M8x16
14	3	K94105	Clevis Pin 1 1/4" x 63mm 50mm Tag PGIH
15	6	043-300-054	Seal For 1 1/4" Needle Bearing L15X
16	3	043-000-053	1 1/4" Needle Bearing

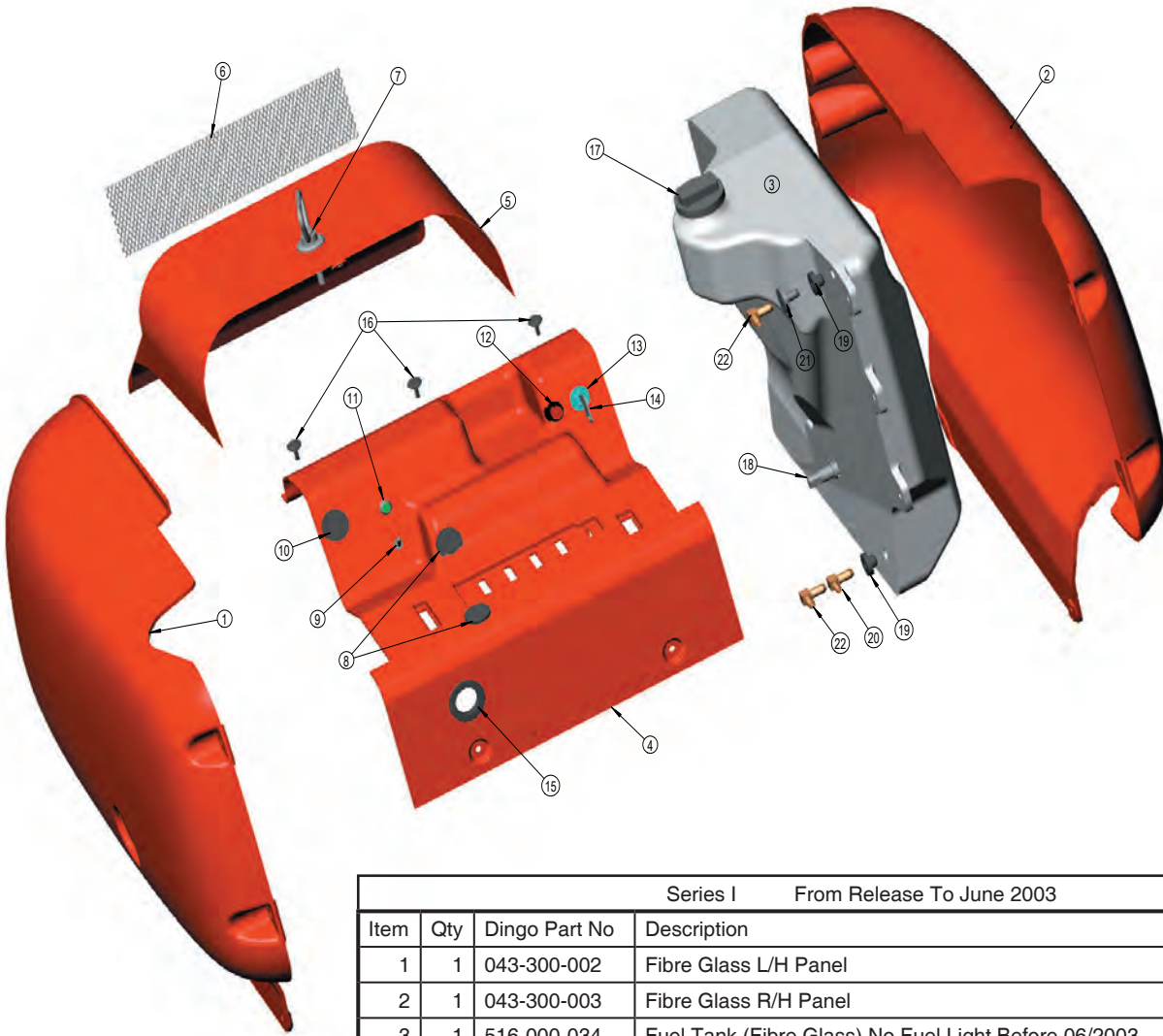
K9-4 Arm Assembly



K9-4 Arm Assembly Part Number

Item	Qty	Dingo Part No	Description
1	1	K94207	K94 Load Arm Assembly Series II (New)
2	1	K94212	Mount Plate (See Previous Page)
3	10	132-221-000	Spring Lock Washer M8
4	10	111-311-016	Hex Bolt M8 x 16
5	2	K94230	Tie Down Bracket
6	2	330-000-018	15mm Hose Guide Plastic
7	1	330-000-020	22m Hose Guide Plastic
8	1	K94237	22mm Hose Guide Plate
9	1	K94434	15mm Hose Guide Plate
10	1	K94433	Remote & Crowd Hose Spacer
11	2	111-311-060	Hex Bolt M8 x 60
12	4	131-231-000	Plain Washer M10
13	4	132-141-000	Spring Lock Washer M10
14	4	111-411-025	Hex Bolt M10 x 25
15	2	K94027	Clevis Pin - Arms To Top of Chassis
16	3	321-000-005	Lift Cylinder
17	6	315-595-500	90 Degree Ram Fitting (C59-0909)
18	1	K94039	Clevis Pin - Top Crowd Pin Chrome
19	2	D95034	Clevis Pin - Lower Lift Arms Chrome
20	2	043-300-021	Arm - Plastic Blanking Grommet
21	1	318-132-000	1/2" Female Quick Release Coupling (NV12GASF)
22	1	318-131-000	1/2" Male Quick Release Coupling (NV12GASM)
23	1	318-122-000	3/8" Female Quick Release Coupling (NV38GASM)
24	1	318-121-000	3/8" Male Quick Release Coupling (NV38GASF)
25	1	310-400-002	1/2" Male Coupling Plug
26	1	310-400-001	1/2" Female Coupling Plug
27	1	310-300-000	3/8" Female Coupling Plug
28	1	310-300-001	3/8" Male Coupling Plug
29	2	316-754-700	Hydraulic Fitting (ZCR2-1408)
30	2	316-753-700	Hydraulic Fitting (ZCR2-0906)
31	2	K94105	Clevis Pin - Top Lift Ram Pin Chrome
32	4	043-000-057	Duralon Bush 1 1/4"
34	1	K94440	1/4" Hyd-Hose RH Ram Bottom To Control Bank Top (520mm)
35	1	K94441	1/4" Hyd-Hose RH Ram Top To Control Bank Bottom (430mm)
36	1	K94442	1/4" Hyd-Hose LH Ram Bottom To Control Bank Top (395mm)
37	1	K94443	1/4" Hyd-Hose LH Ram Top To Control Bank Bottom (355mm)
38	1	K94448	1/4" Hyd-Hose Crowd Ram Bottom To Front Fitting (1590mm)
39	1	K94449	1/4" Hyd-Hose Crowd Ram Top To Rear Fitting (1500mm)
40	1	K94450	1/2" Hyd-Hose 1/2" Female Quick Release To Front Fitting (1150mm)
41	1	K94451	1/2" Hyd-Hose 1/2" Male Quick Release To Rear Fitting (1180mm)
42	1	K94452	1/4" Hyd-Hose 3/8" Female Quick Release To Front Fitting (1105mm)
43	1	K94453	1/4" Hyd-Hose 3/8" Male Quick Release To Rear Fitting (1130mm)

Panels Assemblies

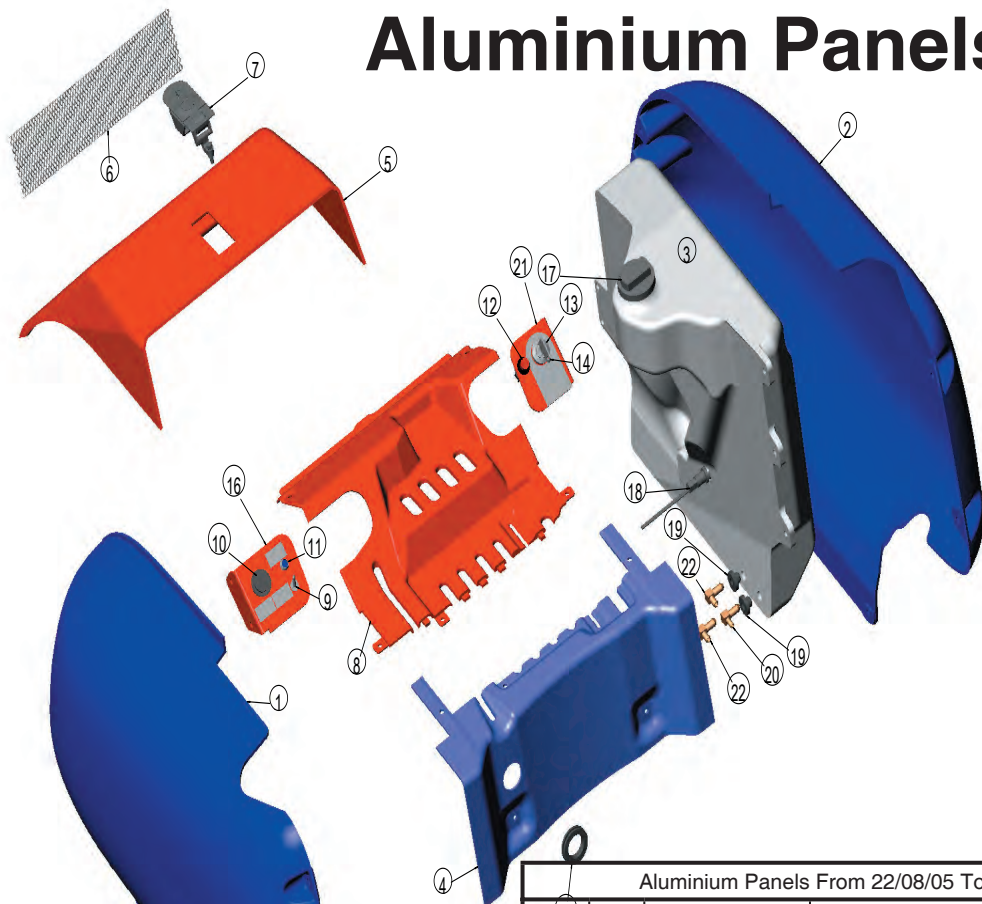


Series I From Release To June 2003			
Item	Qty	Dingo Part No	Description
1	1	043-300-002	Fibre Glass L/H Panel
2	1	043-300-003	Fibre Glass R/H Panel
3	1	516-000-034	Fuel Tank (Fibre Glass) No Fuel Light Before 06/2003
4	1	043-300-001	Dash Panel (Fibre Glass)
5	1	043-300-024	Bonnet No Scoop (Fibre Glass) Before 06/2003.Use Bonnet With Scoop
6	1	.	Not Applicable
7	1	043-300-014	Hinged Bonnet Handle
7	4	.	Fixed Bonnet Clip
8	2	043-300-012	Relief Valve Blanking Grommet
9	1	.	Not Applicable
10	1	410-000-116	12 Volt Auxiliary Power
11	1	.	Not Applicable
12	1	410-000-089	Engine Warning Light. Bulb:420-000-111
13	1	043-000-044	Kohler Ignition Barrel
13	1	518-000-045	Yanmar Ignition Barrel
14	1	043-000-047	Kohler Key
14	1	518-000-046	Yanmar Key
15	1	043-300-013	Immobilizer Grommet
16	3	043-300-017	Bonnet Rest Lugs
17	1	516-000-035	Fuel Cap
18	1	410-000-149	Not Applicable
19	2	516-000-026	Fuel Tank Fitting Bungs
20	1	516-000-029	Petrol Fuel Brass Fitting
21	1	K94-380	Petrol Fuel Tank Blanking Bung
22	2	516-000-030	Diesel Fuel Brass Fitting

Series II From June 2003 To January 2005 Fibre Glass Fuel Tank			
Item	Qty	Dingo Part No	Description
1	1	043-300-002	Fibre Glass L/H Panel
2	1	043-300-003	Fibre Glass R/H Panel
3	1	516-000-037	Fuel Tank (Fibre Glass) With Fuel Light 06/2003-01/2005
4	1	043-300-001	Dash Panel (Fibre Glass)
5	1	043-300-024	Bonnet With Scoop (Fibre Glass) After 06/2003.Use Bonnet With Scoop
6	1	K94-099	Bonnet Gauze
7	1	043-300-014	Hinged Bonnet Handle
8	2	043-300-012	Relief Valve Blanking Grommet
9	1	410-000-152	3rd Gear Switch
10	1	410-000-116	12 Volt Auxiliary Power
11	1	410-000-150	Low Fuel Light
12	1	410-000-089	Engine Warning Light.Bulb:420-000-111
13	1	043-000-044	Kohler Ignition Barrel
13	1	518-000-045	Yanmar Ignition Barrel
14	1	043-000-047	Kohler Key
14	1	518-000-046	Yanmar Key
15	1	043-300-013	Immobilizer Grommet
16	3	043-300-017	Bonnet Rest Lugs
17	1	516-000-035	Fuel Cap
18	1	410-000-149	Low Fuel Light Sensor Internal
19	2	516-000-026	Fuel Tank Fitting Bungs
20	1	516-000-029	Petrol Fuel Brass Fitting
21	1	K94-380	Petrol Fuel Tank Blanking Bung
22	2	516-000-030	Diesel Fuel Brass Fitting

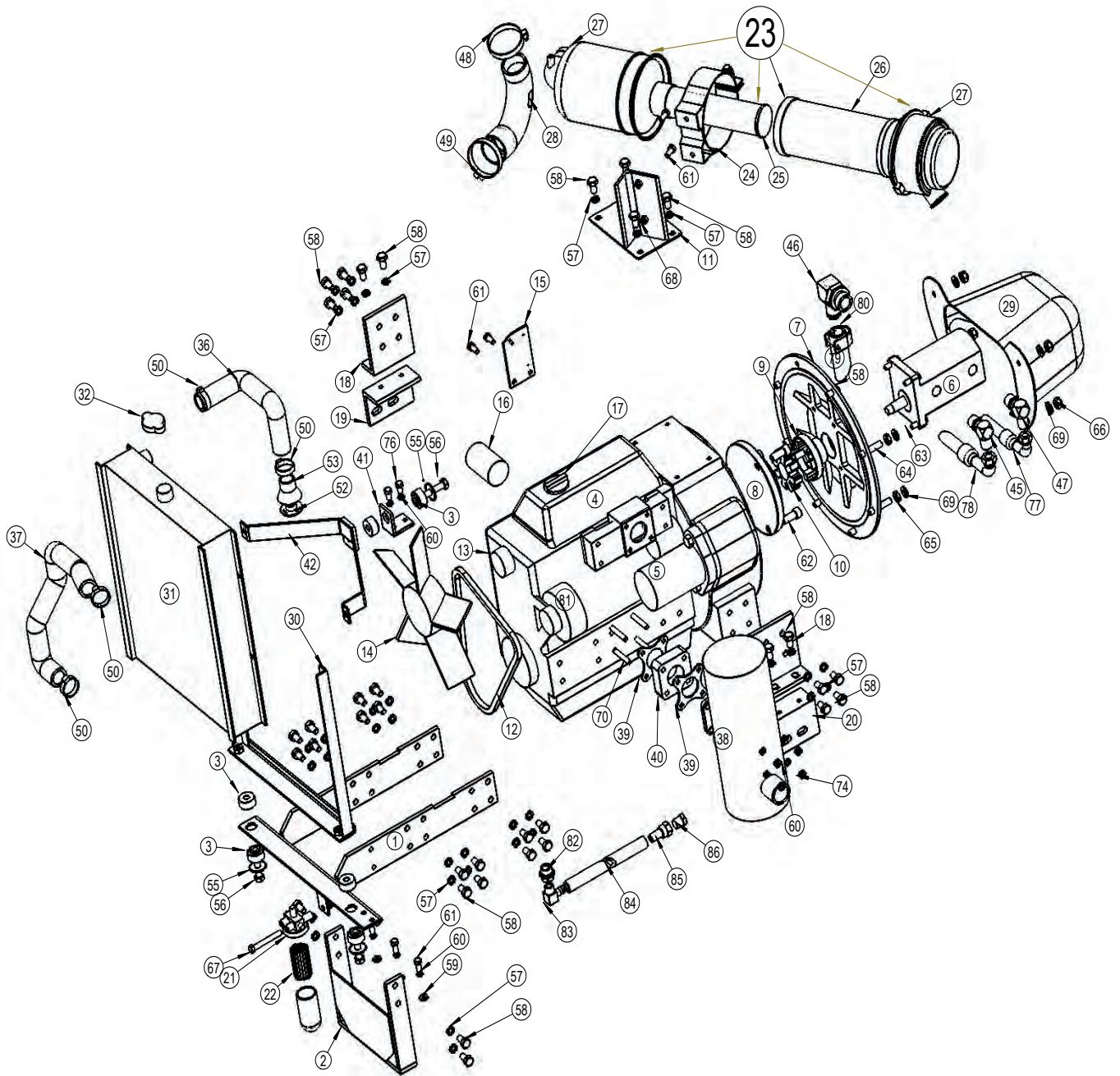
Plastic Fuel Tank January 2005-Onwards			
Item	Qty	Dingo Part No	Description
1	1	043-300-002	Fibre Glass L/H Panel
2	1	043-300-003	Fibre Glass R/H Panel
3	1	K94-520	Fuel Tank (Plastic) After 01/2005
4	1	043-300-001	Dash Panel (Fibre Glass)
5	1	043-300-024	Bonnet With Scoop (Fibre Glass) After 06/2003
6	1	K94-099	Bonnet Gauze
7	1	043-300-014	Hinged Bonnet Handle
8	2	043-300-012	Relief Valve Blanking Grommet
9	1	410-000-152	3rd Gear Switch
10	1	410-000-116	12 Volt Auxiliary Power
11	1	410-000-150	Low Fuel Light
12	1	410-000-089	Engine Warning Light.Bulb:420-000-111
13	1	043-000-044	Kohler Ignition Barrel
13	1	518-000-045	Yanmar Ignition Barrel
14	1	043-000-047	Kohler Key
14	1	518-000-046	Yanmar Key
15	1	043-300-013	Immobilizer Grommet
16	3	043-300-017	Bonnet Rest Lugs
17	1	516-000-035	Fuel Cap
18	1	K94-642	Low Fuel Light Sensor Screw In
19	2	516-000-026	Fuel Tank Fitting Grommet
20	1	516-000-029	Petrol Fuel Brass Fitting
21	1	K94-380	Petrol Fuel Tank Blanking Bung
22	2	516-000-030	Diesel Fuel Brass Fitting

Aluminium Panels Assembly



Aluminium Panels From 22/08/05 To Current Yanmar TNE TNV Perkins			
Item	Qty	Dingo Part No	Description
1	1	K94-131	Aluminium L/H Panel
2	1	K94-130	Aluminium R/H Panel
3	1	K94-520	Fuel Tank (Plastic) After 01/2005 Diesel
3	1	K94-521	Fuel Tank (Plastic) After 01/2005 Petrol
4	1	K94-136	Dash Panel Rear Section Aluminium
5	1	K94-133	Aluminium Bonnet
6	1	K94-099	Bonnet Gauze
7	1	043-300-027	Aluminium Bonnet Handle
8	2	K94-135	Dash Panel Front Section Aluminium
9	1	410-000-152	3rd Gear Switch
10	1	410-000-116	12 Volt Auxiliary Power
11	1	410-000-150	Low Fuel Light
12	1	410-000-089	Engine Warning Light.Bulb:420-000-111
13	1	043-000-044	Kohler Ignition Barrel
13	1	518-000-045	Yanmar Ignition Barrel TNE
13	1	.	Yanmar Ignition Barrel TNV
13	1	.	Perkins Ignition Barrel
14	1	043-000-047	Kohler Key
14	1	518-000-046	Yanmar Key TNE
14	1	.	Yanmar Key TNV
14	1	.	Perkins Key
15	1	043-300-013	Immobilizer Grommet
16	3	K94-141	Aluminium Panels L/H Electrics Bracket
17	1	516-000-035	Fuel Cap
18	1	K94-642	Low Fuel Light Sensor Screw in
19	2	516-000-026	Fuel Tank Fitting Grommet
20	1	516-000-029	Petrol Fuel Brass Fitting
21	1	K94-140	Aluminium Panels R/H Electrics Bracket Yanmar TNE
21	1	K94-142	Aluminium Panels R/H Electrics Bracket Yanmar TNV
21	1	K94-143	Aluminium Panels R/H Electrics Bracket Perkins
22	2	516-000-030	Diesel Fuel Brass Fitting

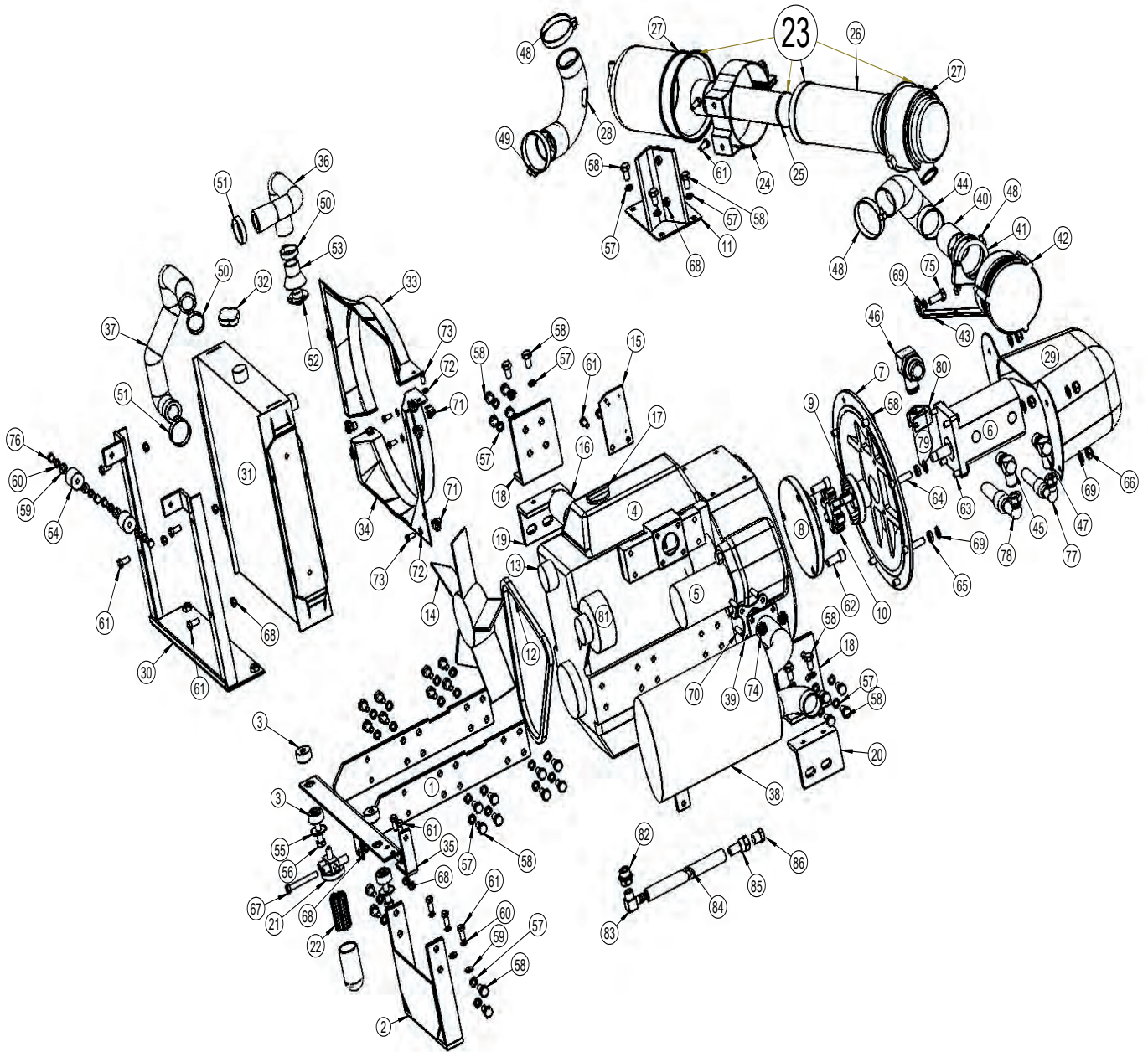
Yanmar Engine Assembly (Series I)



Yanmar Motor Assembly Series I			
Item	Qty	Dingo Part No	Description
1	1	K94-310	Front Engine Mount - Engine Bracket
2	1	K94-306	Front Engine Mount Assembly
3	6	518-000-004	Rubber Mount
4	1	518-000-000	Yanmar Motor (Standard)
4	.	518-000-062	Yanmar Motor (USA Spec)
5	1	518-000-007	Start Motor
6	1	330-002-002	Hydraulic Pump
7	1	K94-325	Cast Bell Housing
8	1	K94-326	Fly Wheel Coupling
9	1	330-005-009	Pump Coupling
10	1	330-005-014	Spider
11	1	K94-332	Air Cleaner Bracket Assembly
12	1	518-000-019	Fan Belt
13	1	518-000-036	Water Pump
.	1	518-000-035	Water Pump Gasket
.	1	518-000-034	Water Pump O-ring
14	1	518-000-009	Fan
15	1	K94-321	Throttle Cable Bracket
16	1	518-000-002	Yanmar Oil Filter
17	1	518-000-039	Oil Filler Cap
.	1	518-000-040	Oil Filler Cap O-ring
18	2	K94-300a	ENG MOUNT REAR - REAR OF ENG TO CHASSIS
19	1	K94-301b	ENG MOUNT REAR - RH LOWER CHASSIS TO ENG
20	1	K94-302b	ENG MOUNT REAR - LH LOWER CHASSIS TO ENG
21	1	518-000-068	Fuel Filter Assembly
22	1	518-000-018	Fuel Filter Element
.	1	518-000-016	Fuel Filter Bowl O-ring
.	1	518-000-015	Fuel Filter Bowl
23	1	515-000-036	Full Air Cleaner Assembly
24	1	515-000-045	Air Cleaner Ring Assembly
25	1	515-000-034	Small Air Cleaner Element Inner
26	1	515-000-033	Large Air Cleaner Element Outer
27	1	.	Plastic Outer Casing For Air Cleaner
28	1	550-000-034	Air Cleaner Pipe From Air Cleaner To Motor
29	1	043-300-005	Pump Cover
30	1	K94-319	Radiator Support Assembly (Series I)
31	1	518-000-010	Radiator (Series I)
32	1	518-000-020	Radiator Cap
33	.	.	.
34	.	.	.
35	.	.	.
36	1	518-000-003	Top Radiator Hose (Series I)
37	1	518-000-026	Bottom Radiator Hose (Series I)
38	1	518-000-023	Yanmar Muffler (Series I)
39	2	518-000-022	Yanmar Exh Gasket
40	1	K94-320	Yanmar Exhaust Spacer

Yanmar Motor Assembly Series I			
Item	Qty	Dingo Part No	Description
41	1	K94-314	Engine To Top Radiator Bracket
42	1	K94-311	Top Radiator Support
43	.	.	.
44	.	.	.
45	1	315-477-500	Hydraulic Fitting (CP56-0814)
46	1	319-381-800	Hydraulic Fitting (CP60-1616)
47	1	315-476-500	Hydraulic Fitting (CP56-0812)
48	1	100-000-063	Hose Clamp 2 1/4"
49	1	100-000-064	Hose Clamp 2 3/4"
50	4	100-000-062	Hose Clamp No16 21-38mm
51	.	.	.
52	1	518-000-011	Thermostat
53	1	518-000-012	Thermostat Housing Gasket
54	.	.	.
55	3	131-231-001	Flat Wide Washer 3/8" x 1 1/4" x 16G
56	3	111-411-055	Hex Bolt M10 x 55
57	37	132-141-000	Spring Lock Washer M10
58	40	111-411-020	Hex Bolt M10 x 20
59	3	131-131-000	Plain Washer M8
60	3	132-131-000	Spring Lock Washer M8
61	11	111-311-020	Hex Bolt M8 x 20
62	3	111-522-030	Socket Head Cap Screw M12 x 30 (Locktited)
63	4	111-311-030	Hex Bolt M8 x 30
64	4	518-000-032	M10 x 50mm Stud
65	4	121-142-000	Hex Nut M10
66	4	122-141-000	Nyloc Nut M10
67	1	111-311-070	Hex Bolt M8 x 70
68	7	122-131-000	Nyloc Nut M8
69	8	131-141-000	Plain Washer M10
70	4	518-000-021	M8 x 60mm Stud
71	.	.	.
72	.	.	.
73	.	.	.
74	4	513-000-073	Hex Flange Nut M8
75	.	.	.
76	2	111-311-016	Hex Bolt M8 x 16
77	1	K94-462	3/8" Hyd-Hose Rear Pump To Rear Selector Valve
78	1	K94-463	1/2" Hyd-Hose Front Pump To Front Selector Valve
79	1	K94-464	1" Hyd-Hose Suction (535mm)
80	2	300-000-006	Hose Clamp 34mm
81	1	518-00-008	Dynamo
82	1	311-330-000	Fitting (ZCMB73-2206)
83	1	319-333-420	90° Brass Fitting
84	1	345-400-000	1/2" Ortac Hose Oil Drain Hose
85	1	319-160-400	Hose Tail Fitting (JIC 3DK21) (LFJ1208)
86	1	312-650-000	Hose End Fitting (C78-12)

Yanmar TNE/TVE Engine Assembly (Series II Onwards)

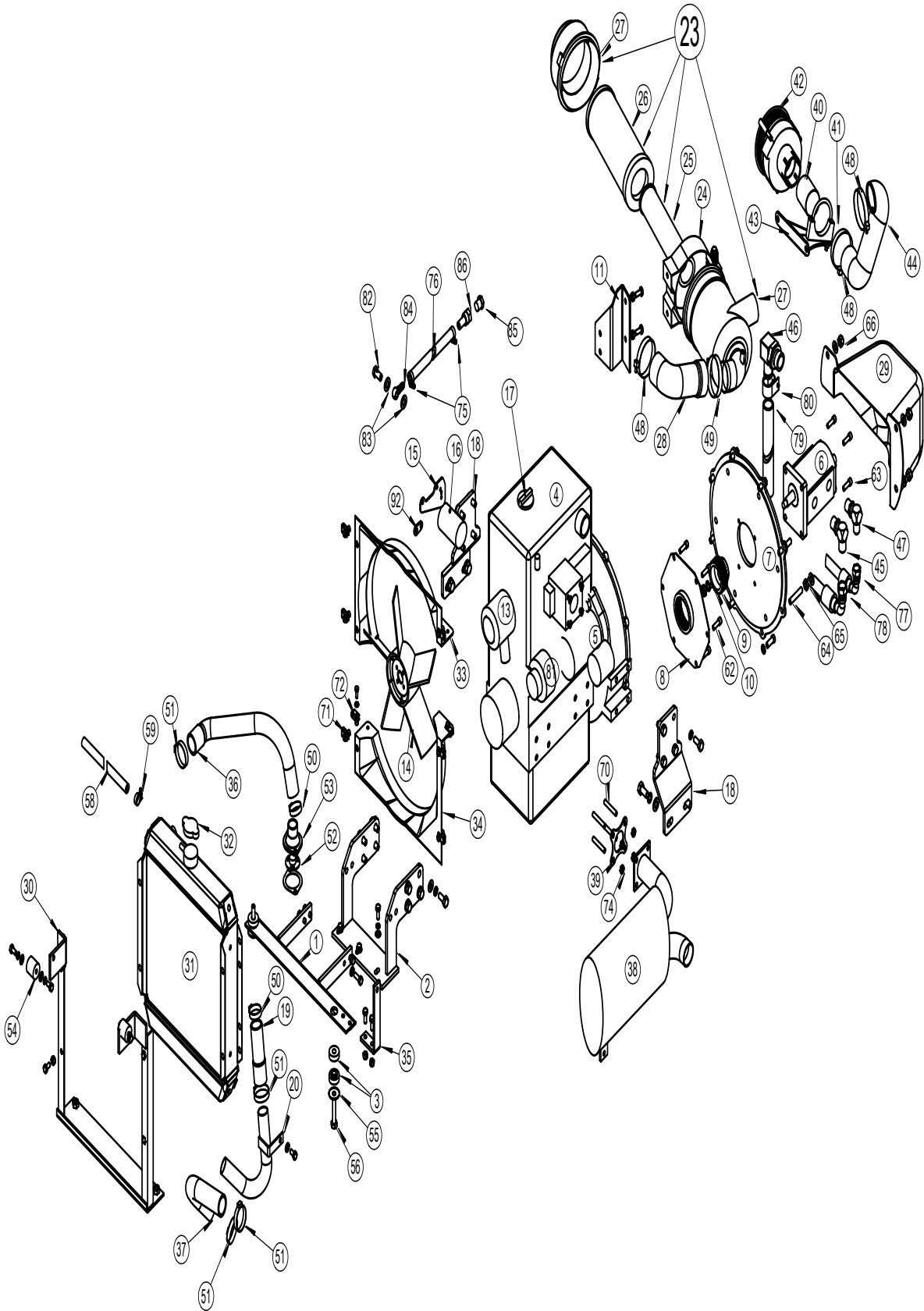


Yanmar Motor Assembly Series II			
Item	Qty	Dingo Part No	Description
1	1	K94-310	Front Engine Mount - Engine Bracket TNE
1	.	K94-810	Front Engine Mount - Engine Bracket TNV
2	1	K94-306	Front Engine Mount Assembly
3	4	518-000-004	Rubber Mount
4	1	518-000-000	Yanmar Motor TNE (Standard)
4	.	518-000-062	Yanmar Motor TNE (USA Spec)
4	.	.	Yanmar Motor TNV

Yanmar Motor Assembly Series II			
Item	Qty	Dingo Part No	Description
5	1	518-000-007	Start Motor
6	1	330-002-002	Hydraulic Pump TNE 9/4cc
6	.	330-002-007	Hydraulic Pump TNV 11.2/4cc
7	1	K94-325	Cast Bell Housing
8	1	K94-326	Fly Wheel Coupling
9	1	330-005-009	Pump Coupling
10	1	330-005-014	Spider
11	1	K94-332	Air Cleaner Bracket Assembly TNE
11	.	K94-382	Air Cleaner Bracket Assembly TNV
12	1	518-000-019	Fan Belt
13	1	518-000-036	Water Pump
.	1	518-000-035	Water Pump Gasket
.	1	518-000-034	Water Pump O-ring
14	1	518-000-009	Fan
15	1	K94-321	Throttle Cable Bracket
16	1	518-000-002	Yanmar Oil Filter
17	1	518-000-039	Oil Filler Cap
.	1	518-000-040	Oil Filler Cap O-ring
18	2	K94-300a	ENG MOUNT REAR - REAR OF ENG TO CHASSIS
19	1	K94-301b	ENG MOUNT REAR - RH LOWER CHASSIS TO ENG
20	1	K94-302b	ENG MOUNT REAR - LH LOWER CHASSIS TO ENG
21	1	518-000-068	Fuel Filter Assembly
22	1	518-000-018	Fuel Filter Element
.	1	518-000-016	Fuel Filter Bowl O-ring
.	1	518-000-015	Fuel Filter Bowl
23	1	515-000-036	Full Air Cleaner Assembly
24	1	515-000-045	Air Cleaner Ring Assembly
25	1	515-000-034	Small Air Cleaner Element Inner
26	1	515-000-033	Large Air Cleaner Element Outer
27	1	.	Plastic Outer Casing For Air Cleaner
28	1	550-000-034	Air Cleaner Pipe From Air Cleaner To Motor
29	1	043-300-005	Pump Cover
30	1	K94-337	Radiator Support Assembly (Series II) TNE
30	.	K94-387	Radiator Support Assembly (Series III) TNV
31	1	518-000-051	Radiator (Series II)
32	1	518-000-020	Radiator Cap
33	1	K94-347	Split Fan Shroud Top Half
34	1	K94-348	Split Fan Shroud Bottom Half
35	1	K94-344	Muf er Bracket
36	1	518-000-050	Top Radiator Hose (Series II)
37	1	518-000-049	Bottom Radiator Hose (Series II)
38	1	518-000-042	Berklee Muf er (Series II) TNE
39	1	518-000-022	Yanmar Exh Gasket
40	1	K94-336	Pre Cleaner Tube
41	1	515-000-048	Pre-Cleaner Clamp 2 3/8" Exhaust Clamp
42	1	515-000-047	Turbo Pre-Cleaner

Yanmar Motor Assembly Series II			
Item	Qty	Dingo Part No	Description
43	1	K94-335	Pre Cleaner Bracket
44	1	515-000-055	Pre Cleaner Hose 190mm x 2" (Per Meter)
45	1	315-477-500	Hydraulic Fitting (CP56-0814)
46	1	319-381-800	Hydraulic Fitting (CP60-1616)
47	1	315-476-500	Hydraulic Fitting (CP56-0812)
48	3	100-000-063	Hose Clamp 2 1/4"
49	1	100-000-064	Hose Clamp 2 3/4"
50	2	100-000-062	Hose Clamp B2480 21-38mm To Engine
51	2	100-000-066	Hose Clamp B2481 21-44mm To Radiator
52	1	518-000-011	Thermostat
53	1	518-000-012	Thermostat Housing Gasket
54	2	518-000-053	Threaded Front Rubber Mount
55	2	131-231-002	Flat Wide Washer 3/8" x 1 1/4" x 16G
56	2	111-411-055	Hex Bolt M10 x 55
57	37	132-141-000	Spring Lock Washer M10
58	39	111-411-020	Hex Bolt M10 x 20
59	7	131-131-000	Plain Washer M8
60	7	132-131-000	Spring Lock Washer M8
61	13	111-311-020	Hex Bolt M8 x 20
62	3	111-522-030	Socket Head Cap Screw M12 x 30 (Loctited)
63	4	111-311-030	Hex Bolt M8 x 30
64	4	518-000-032	M10 x 50mm Stud
65	4	121-142-000	Hex Nut M10
66	4	122-141-000	Nyloc Nut M10
67	1	111-311-070	Hex Bolt M8 x 70
68	9	122-131-000	Nyloc Nut M8
69	8	131-141-000	Plain Washer M10
70	4	.	M8 x 35mm Stud
71	6	120-121-000	M6 Speed Nut (Short)
71	2	120-122-000	M6 Speed Nut (Long)
72	8	131-121-001	Plain Washer M6
73	8	111-211-020	Hex Bolt M6 x 20
74	4	513-000-073	Hex Flange Nut M8
75	1	111-411-030	Hex Bolt M10 x 30
76	4	111-311-016	Hex Bolt M8 x 16
77	1	K94-462	3/8" Hyd-Hose Rear Pump To Rear Selector Valve
78	1	K94-463	1/2" Hyd-Hose Front Pump To Front Selector Valve
79	1	K94-464	1" Hyd-Hose Suction 535mm
80	2	300-000-006	Hose Clamp 34mm
81	1	518-000-008	Dynamo
82	1	311-330-000	Fitting (ZCMB73-2206)
83	1	319-333-420	90° Brass Fitting
84	1	345-400-000	1/2" Ortac Hose Oil Drain Hose
85	1	319-160-400	Hose Tail Fitting (JIC 3DK21) (LFJ1208)
86	1	312-650-000	Hose End Fitting (C78-12)

K9-4 Perkins Engine Diagram And Part List



Perkins Motor Assembly			
Item	Qty	Dingo Part No	Description
1	1	K94-807	Front Engine Mount - Engine Bracket
2	1	K94-805	Front Engine Mount Assembly
3	4	518-000-004	Rubber Mount
4	1	518-000-000	Perkins Diesel Engine
5	1	.	Start Motor
6	1	330-002-007	Hydraulic Pump 11.2/4cc
7	1	330-005-020	Perkins Bell Housing
8	1	330-003-082	Motor Drive Plate
9	1	330-003-081	Spline Drive Coupling Gear
10	1	330-002-008	Kit: Woodruff Key, Spring Washer & Nut
11	1	K94-811	Air Cleaner Bracket Perkins
12	1	519-000-021	Perkins Fan Belt
13	1	519-000-018	Water Pump
.	1	519-000-020	Water Pump Gasket
.	1	.	Water Pump O-ring
14	1	.	Fan
15	1	K94-821	Throttle Cable Bracket Perkins
16	1	519-000-008	Perkins Short Oil Filter
17	1	.	Oil Filler Cap
.	1	.	Oil Filler Cap O-ring
18	2	K94-802	Perkins Rear Engine Mount
19	1	K94-816	Perkins Bottom Radiator Hose Pipe To Motor
20	1	K94-814	Bottom Radiator Pipe
21	1	.	Fuel Filter Assembly
22	1	519-000-010	Fuel Filter Element
.	1	.	Fuel Filter Bowl O-ring
.	1	.	Fuel Filter Bowl
23	1	515-000-036	Full Air Cleaner Assembly
24	1	515-000-045	Air Cleaner Ring Assembly
25	1	515-000-034	Small Air Cleaner Element
26	1	515-000-033	Large Air Cleaner Element
27	1	.	Plastic Outer Casing For Air Cleaner
28	1	K94-817	Air Cleaner Pipe From Air Cleaner To Motor Perkins
29	1	043-300-005	Pump Cover
30	1	K94-847	Radiator Support Assembly Perkins
31	1	960-000-002	Radiator Perkins
32	1	518-000-020	Radiator Cap
33	1	K94-347	Split Fan Shroud Top Half
34	1	K94-348	Split Fan Shroud Bottom Half
35	1	K94-844	Muf er Bracket Perkins
36	1	K94-819	Top Radiator Hose Perkins
37	1	518-000-050	Bottom Radiator Hose Radiator To Pipe Perkins
38	1	519-000-006	Berklee Muf er Perkins
39	1	.	Perkins Exh Gasket
40	1	K94-336	Pre Cleaner Tube
41	1	515-000-048	Pre-Cleaner Clamp 2 3/8" Exhaust Clamp

42	1	515-000-047	Turbo Pre-Cleaner
43	1	K93-339	Pre Cleaner Bracket Perkins
44	1	515-000-055	Pre Cleaner Hose 190mm
45	1	315-477-500	Hydraulic Fitting (CP56-0814)
46	1	319-381-800	Hydraulic Fitting (CP60-1616)
47	1	315-476-500	Hydraulic Fitting (CP56-0812)
48	3	100-000-063	Hose Clamp 2 1/4"
49	1	100-000-064	Hose Clamp 2 3/4"
50	2	100-000-062	Hose Clamp No16 21-38mm
51	4	100-000-066	Hose Clamp No20 21-44mm
52	1	519-000-014	Thermostat
53	1	519-000-015	Thermostat Housing Gasket
54	2	518-000-053	Threaded Front Rubber Mount
55	2	131-231-002	M10 Flat Wide Washer
56	2	111-411-055	Hex Bolt M10 x 55
57	1	K94-826	Throttle Cable Extension Link
58	1	K94-346	Radiator Over ow Hose
59	1	.	Small hose clamp
60	.	.	.
61	.	.	.
62	6	113-222-012	Socket Head Cap Screw 5/16" UNC x 3/4"
63	4	113-222-016	Socket Head Cap Screw 5/16" UNC x 1"
64	4	.	3/8" x ??" Stud
65	4	.	Hex Nut 3/8" UNC
66	4	.	Nyloc Nut 3/8" UNC
67	.	.	.
68	.	.	.
69	.	.	.
70	4	.	Exhaust Stud M8 x 35
71	4	120-121-000	M6 Speed Nut
72	2	120-122-000	M8 Speed Nut
73	.	.	.
74	4	513-000-073	Hex Flange Nut M8
75	2	.	Hose Clamp 11-18mm
76	1	340-000-002	3/8" Oil Hose
77	1	K94-462	3/8" Hyd-Hose Rear Pump To Rear Selector Valve
78	1	K94-463	1/2" Hyd-Hose Front Pump To Front Selector Valve
79	2	K94-464	1" Hyd-Hose Suction
80	2	300-000-006	Hose Clamp 34mm
81	1	.	Dynamo
82	1	K94-845	Banjo Bolt 12mm Drilled out from 101-000-001
83	2	131-155-000	Brass Washer
84	1	101-000-002	BANJO 12MM X 3/8" HOSE 6A-2 PERKINS SUMP
85	1	312-650-000	Hose End Fitting (C78-12)
86	1	319-166-301	Hose Tail 3/8" to 3/4" JIC

Warranty Statement

DINGO MINI DIGGERS PTY LTD (ABN 95 060 840 011) POLICY

DINGO MINI DIGGERS PTY LTD warrants to the original buyer/owner that each new Dingo™ or Dingo attachment will be free from any proven defects in the material or workmanship for a period of thirty (36) months or 1000 hours, whichever is sooner, after the delivery to the owner provided that:-

1. The Dingo/Attachment has been properly and reasonably used, operated, maintained and regularly serviced.
2. All replacement or repair is authorised by DINGO MINI DIGGERS PTY LTD or an authorised DINGO MINI DIGGERS dealer.

This refers to all Dingo/Attachment parts, excluding motor and battery as outlined below.

During the warranty period, DINGO MINI DIGGERS or their authorised dealer shall repair or replace, at their option, without charge for parts and labour, any part of the Dingo/Attachment which fails because of defects in the workmanship or materials. The owner shall advise DINGO MINI DIGGERS or their authorised dealer immediately of any defect and allow reasonable time for replacement or repair. Travel time for servicemen and transportation of the Dingo/Attachment to DINGO MINI DIGGERS or the dealer's premises for warranty work are the owner's responsibility.

WARRANTY EXCLUSIONS

This warranty does not cover: -

1. Tyres or other consumables or service parts (nuts and bolts, trencher teeth, etc) replaced as part of a normal maintenance service as opposed to manufacturing defects.
2. Damage resulting from abuse, negligence, accidents, alterations, air flow obstructions, or failure to maintain or use the machine according to the instructions given.
3. Downtime expenses, loss of machine use, rental of another machine or related equipment while repairs are in progress, or other incidental, consequential, or special damages.
4. Communication expenses such as Telephone and Facsimile.
5. Travel time for servicemen.
6. Transportation and Insurance charges for transportation of the failed Dingo/Attachment.
7. Any labour, parts, mechanical adjustments or lubricant expenses which Dingo Mini Diggers Pty Ltd or an authorised Dingo Mini Digger dealer considers should be made as a standard maintenance procedure according to the Dingo maintenance guidelines listed in this manual.
8. Any defect caused by work carried out without the authorisation of Dingo Mini Diggers Pty Ltd or an authorised Dingo Mini Digger Dealer.
9. Damage caused by continued use of the machine after it is known to be defective.
10. Damage caused by overloading or by racing and similar activities.

This warranty is in lieu of all other warranties, expressed or implied, and there are no warranties of merchantability or fitness for a particular purpose.

The benefits conferred by this warranty are in addition to all other rights and remedies in respect of the product which the consumer has under the Trade Practices Act (Commonwealth) and the Fair Trading Act of Queensland.

Machines of this type can be dangerous if used carelessly or improperly. The manufacturer, distributor or selling agent does not accept responsibility for accident either to the operator, to the owner or to any person directly or indirectly or to property if such an accident is caused by circumstances arising otherwise than by the negligence or default of Dingo Mini Diggers Pty Ltd.

PARTS INSTALLED DURING MACHINE WARRANTY

Components installed during a machines warranty period shall have warranty coverage for the duration of the machine warranty period or ninety (90) days, which ever is greater, provided the warranty installation is performed by Dingo Mini Diggers Pty Ltd or an authorised Dingo Mini Digger dealer.

ENGINE POLICY

The engine in a new Dingo Mini Digger is covered by the manufacturer of that specific engine, not by Dingo Mini Diggers Pty Ltd. The engine owner's manual will have details of the cover provided.

BATTERY POLICY

The Battery in a new Dingo Mini Digger is covered by the manufacturer of that specific battery under that companies normal warranty policy.

N.B. Dingo Mini Diggers Pty Ltd reserve the right to change at any time the Dingo Mini Digger product specifications, configurations, and company policies, this is due to our constant commitment to make the best product for the job



Product Name: K9-4				
Summary of Product Application	The K9-4 is the power plant for the attachments. It is designed for a single operator, who stands on the platform at the rear of the machine using the hydraulic lever system.			
Hazards	Risk Assessment			
	Probability	Exposure	Consequence	Risk Level
Moving parts	Unusual	Occasional	Serious	Mod/Substantial
Pinch points	Unusual	Occasional	First aid	Acceptable
Movement of load carried by unit.	Unusual	Occasional	Serious	Mod/Substantial
Tip over	Unusual	Occasional	Serious	Mod/Substantial
Hot parts	Unusual	Occasional	First aid	Acceptable
Fire and explosion	Possible	Occasional	Casualty	Mod/Acceptable
Electricity	Unusual	Occasional	First aid	Acceptable
Noise	Very likely	Occasional	Serious	High
Spurting hydraulic fluid from hose leak.	Unlikely	Occasional	Casualty	Acceptable

<p>Control measures</p>	<ul style="list-style-type: none"> • Ergonomic design of operation controls. • Hydraulic oil hoses made from heavy duty good quality hosing. • Two-circuit hydraulic system allowing high and low range and better control over the vehicle and attachments. Quick hitch system eliminates any manual handling involved with installing attachments. • Visibility and mobility of operator is improved by the standing position of the operator. • Operators standing platform reduces ergonomic sprain and strain by upright operation position. • Operator's platform has an open design to allow the operator the ability to get off the machine to the left, right or rear should the machine turn over. There are no side rails alongside the operator as these act to trap the operator on the machine in the event of a machine roll over. • Rubber inserts in operator's platform cushions the operator from vibration. • Spark resistant plastic and fibreglass fuel tank. • Security system disables the hydraulic system to prevent unauthorised use. • Low centre of gravity to prevent tip over. • Hydraulic tank located away from operator and the radiator in the diesel models blows hot air away from the operator. • Safety decals in appropriate positions. • Auxiliary power socket for extra lighting if required for better visibility. • Weight of the Dingo increases the stability and lifting ability. • Electrical cables enclosed and sealed. • Cylinder lock to prevent accidental release of arms and possible attachment. • Hot parts enclosed within fibreglass casing. • Pinch points designed out. • Body opens up to allow good access for maintenance. • Operation safety video and training are provided with purchase or hire. • Operator's manual details safe operation of K9-4 • The greatest risk is to people working around the Dingo, rather than the operator. To eliminate risk, ensure that an effective barrier is created around the operating machinery. • Ensure that the operating area is free from hazards before work commences. • Appropriate hearing protection should be used if the operator is using the Dingo for prolonged periods in one day. If the Dingo is to be used in an enclosed area for prolonged periods in a day, both the operator and others working around the Dingo should wear appropriate hearing protection.
<p>Residual Risk of Plant with Control Measures</p>	<ul style="list-style-type: none"> • Moderate/Acceptable
<p>Additional Safety Comments</p>	<ul style="list-style-type: none"> • The risk assessment has been carried out using the NSCA Risk Score Calculator. For more information contact Dingo.



Proudly manufactured by
Dingo Mini Diggers Pty Ltd
9 Owen Street East
Dalby Qld, 4405
Australia
PO Box 721 Dalby 4405

Dalby Head Office 07 4672 5400

Brisbane 07 3272 7088

Sydney 02 9833 8222

Melbourne 03 9334 0300

Adelaide 08 8262 2022

Perth 08 9311 9811

Nth Queensland 07 4796 0555

New Zealand 0011 64 7378 9840

www.dingo.ws